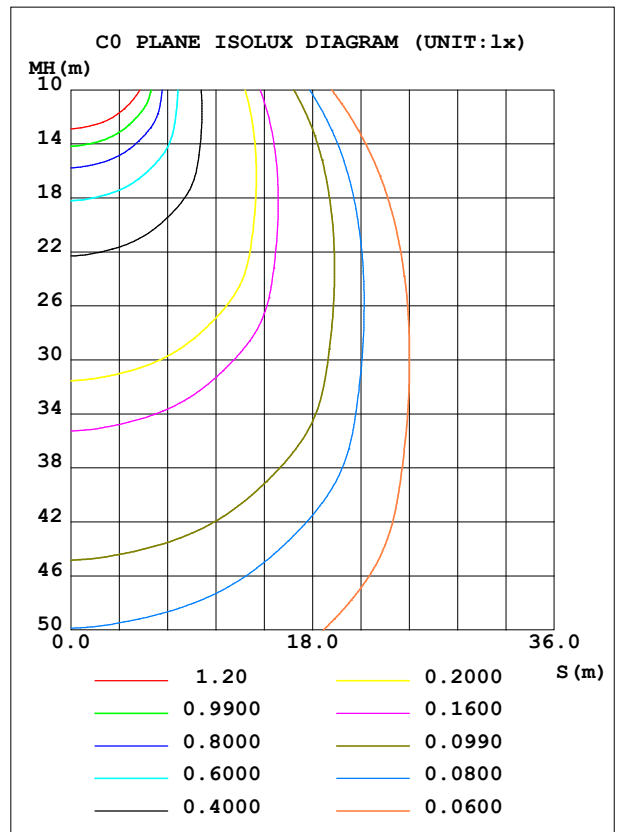
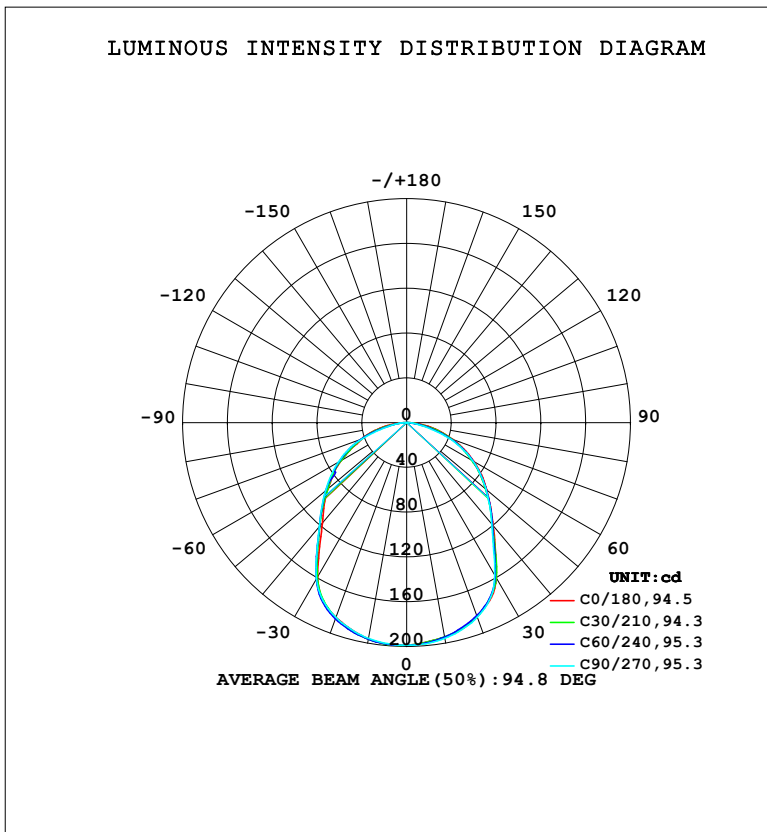


LUMINAIRE PHOTOMETRIC TEST REPORT

Test:U:220.38V I:0.0379A P:7.0176W PF:0.8391 Freq:50.00Hz Lamp Flux:484.393x1 lm		
NAME:	TYPE:	WEIGHT:
SPEC.:	DIM.:	SERIAL No.:
MFR.: EVERFINE	SUR.:	Shielding Angle:

DATA OF LAMP		PHOTOMETRIC DATA				Eff: 69.03 lm/W
MODEL	W18	I _{max} (cd)	199.1	S/MH (C0/180)	1.19	
NOMINAL POWER (W)	7	LOR (%)	100.0	S/MH (C90/270)	1.20	
RATED VOLTAGE (V)	220	TOTAL FLUX (lm)	484.39	η UP, DN (C0-180)	0.0, 49.7	
NOMINAL FLUX (lm)	484.393	CIE CLASS	DIRECT	η UP, DN (C180-360)	0.0, 50.3	
LAMPS INSIDE	1	η up (%)	0.0	CIBSE SHR NOM	1.25	
TEST VOLTAGE (V)	219.5	η down (%)	100.0	CIBSE SHR MAX	1.30	



C Range: 0 - 360DEG
C Interval: 15.0DEG
Test Speed: HIGH
Temperature: 25.3°C
Operators: DAMIN
Test Date: 2024-05-30

γ Range: 0 - 90DEG
γ Interval: 1.0DEG
Test System: EVERFINE GO-2000B_V1 SYSTEM V2.00.473
Humidity: 65.0%
Test Distance: 9.401m [K=1.0000]
Remarks:

ZONAL FLUX DIAGRAM

ZONAL FLUX DIAGRAM:

γ	C0	C45	C90	C135	C180	C225	C270	C315	γ	Φ zone	Φ total	%lum, lamp
10	194.7	194.0	195.7	195.9	196.3	196.2	195.6	194.7	0- 10	18.81	18.81	3.88,3.88
20	183.8	184.2	184.8	184.2	184.9	186.0	185.1	184.7	10- 20	53.91	72.72	15,15
30	160.2	160.2	157.5	158.1	159.1	159.6	161.3	159.8	20- 30	80.32	153.0	31.6,31.6
40	120.4	119.6	118.6	118.1	117.2	119.7	121.7	119.7	30- 40	86.20	239.2	49.4,49.4
50	93.30	93.07	92.54	91.67	91.67	94.56	94.61	90.94	40- 50	81.55	320.8	66.2,66.2
60	69.43	68.78	68.09	68.30	67.51	67.70	70.35	70.53	50- 60	72.19	393.0	81.1,81.1
70	43.91	42.79	39.66	42.48	42.65	43.60	42.11	44.19	60- 70	55.22	448.2	92.5,92.5
80	19.55	14.79	11.59	14.24	19.72	15.14	12.56	15.12	70- 80	29.82	478.0	98.7,98.7
90	0.5113	0.3491	0.3554	0.3978	0.5053	0.4815	0.4458	0.4942	80- 90	6.361	484.4	100,100
100									90-100			
110									100-110			
120									110-120			
130									120-130			
140									130-140			
150									140-150			
160									150-160			
170									160-170			
180									170-180			
DEG	LUMINOUS INTENSITY:cd									UNIT:lm		

Conical surface Flux(90deg): 280.78 lm

%lum = 58.0%

%lamp = 58.0%

Conical surface Flux(130deg): 423.23 lm

%lum = 87.4%

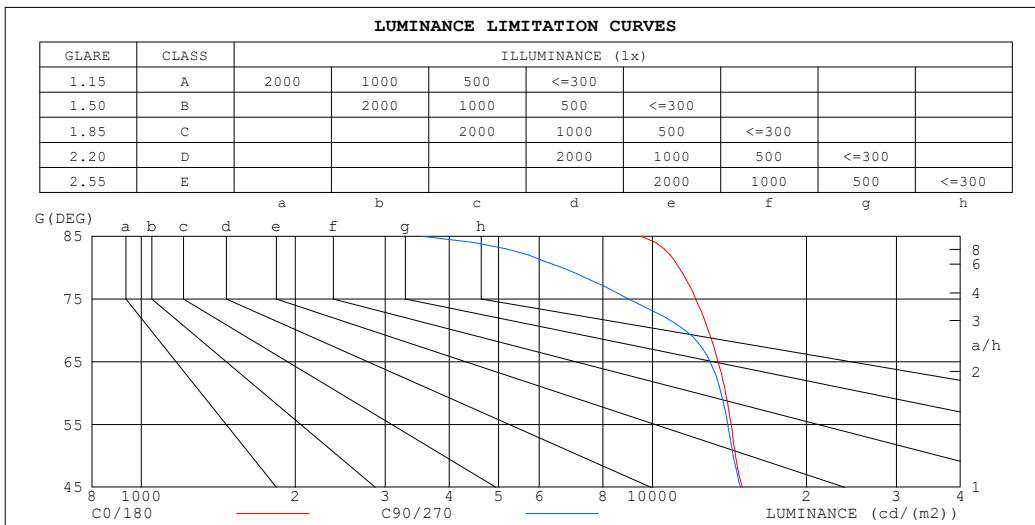
%lamp = 87.4%

C Range: 0 - 360DEG
 C Interval: 15.0DEG
 Test Speed: HIGH
 Temperature:25.3°C
 Operators:DAMIN
 Test Date:2024-05-30

γ Range: 0 - 90DEG
 γ Interval: 1.0DEG
 Test System:EVERFINE GO-2000B_V1 SYSTEM V2.00.473
 Humidity:65.0%
 Test Distance:9.401m [K=1.0000]
 Remarks:

LUMINANCE LIMITATION CURVES

Test:U:220.38V I:0.0379A P:7.0176W PF:0.8391 Freq:50.00Hz Lamp Flux:484.393x1 lm		
NAME:	TYPE:	WEIGHT:
SPEC.:	DIM.:	SERIAL No.:
MFR.: EVERFINE	SUR.:	Shielding Angle:



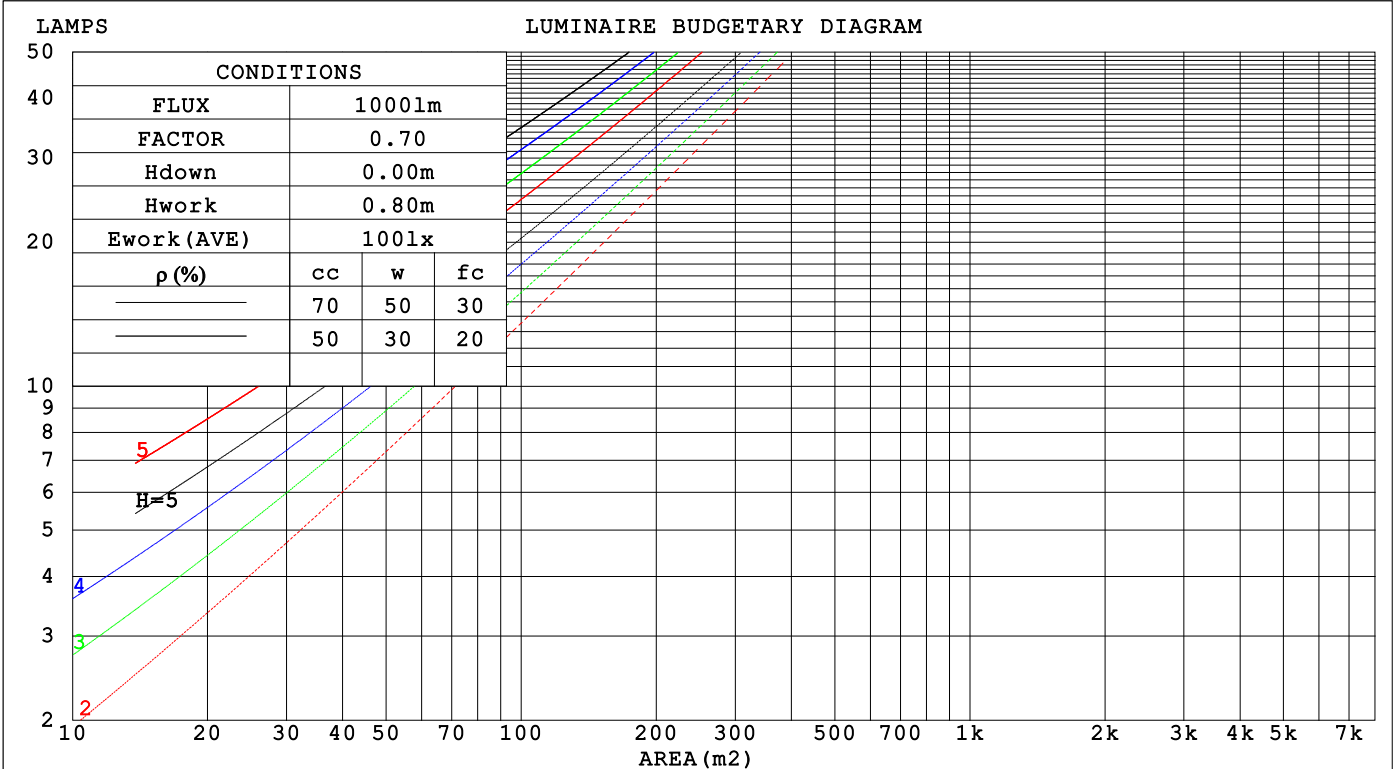
C Range: 0 - 360DEG
 C Interval: 15.0DEG
 Test Speed: HIGH
 Temperature: 25.3°C
 Operators: DAMIN
 Test Date: 2024-05-30

γ Range: 0 - 90DEG
 γ Interval: 1.0DEG
 Test System: EVERFINE GO-2000B_V1 SYSTEM V2.00.473
 Humidity: 65.0%
 Test Distance: 9.401m [K=1.0000]
 Remarks:

CU AND LUMINAIRE BUDGETARY ESTIMATE DIAGRAM

Test:U:220.38V I:0.0379A P:7.0176W PF:0.8391 Freq:50.00Hz Lamp Flux:484.393x1 lm		
NAME:	TYPE:	WEIGHT:
SPEC.:	DIM.:	SERIAL No.:
MFR.: EVERFINE	SUR.:	Shielding Angle:

ρ_{cc}	80%			70%			50%			30%			10%			0
ρ_w	50%	30%	10%	50%	30%	10%	50%	30%	10%	50%	30%	10%	50%	30%	10%	0
ρ_{fc}	20%			20%			20%			20%			20%			0
RCR	RCR:Room Cavity Ratio Coefficients of Utilization(CU)															
0.0	1.19	1.19	1.19	1.16	1.16	1.16	1.11	1.11	1.11	1.06	1.06	1.06	1.02	1.02	1.02	1.00
1.0	1.05	1.01	.97	1.02	.99	.95	.98	.95	.92	.94	.92	.90	.91	.89	.87	.85
2.0	.92	.85	.80	.90	.84	.79	.86	.81	.77	.83	.79	.75	.80	.77	.74	.71
3.0	.81	.73	.67	.80	.72	.66	.77	.70	.65	.74	.69	.64	.71	.67	.63	.61
4.0	.72	.64	.57	.71	.63	.57	.68	.62	.56	.66	.60	.55	.64	.59	.55	.52
5.0	.65	.56	.50	.64	.56	.49	.62	.54	.49	.60	.53	.48	.58	.52	.48	.46
6.0	.59	.50	.44	.58	.50	.44	.56	.49	.43	.54	.48	.43	.53	.47	.42	.40
7.0	.53	.45	.39	.53	.44	.39	.51	.44	.38	.50	.43	.38	.48	.42	.38	.36
8.0	.49	.41	.35	.48	.40	.35	.47	.40	.35	.46	.39	.34	.45	.39	.34	.32
9.0	.45	.37	.32	.44	.37	.32	.43	.36	.31	.42	.36	.31	.41	.35	.31	.29
10.0	.42	.34	.29	.41	.34	.29	.40	.33	.29	.39	.33	.28	.38	.33	.28	.27



C Range: 0 - 360DEG
 C Interval: 15.0DEG
 Test Speed: HIGH
 Temperature:25.3°C
 Operators:DAMIN
 Test Date:2024-05-30

γ Range: 0 - 90DEG
 γ Interval: 1.0DEG
 Test System:EVERFINE GO-2000B_V1 SYSTEM V2.00.473
 Humidity:65.0%
 Test Distance:9.401m [K=1.0000]
 Remarks:

WEC AND CCEC

Test:U:220.38V I:0.0379A P:7.0176W PF:0.8391 Freq:50.00Hz								
Lamp Flux:484.393x1 lm								
NAME:			TYPE:			WEIGHT:		
SPEC.:			DIM.:			SERIAL No.:		
MFR.: EVERFINE			SUR.:			Shielding Angle:		

ρ_{CC}	80%			70%			50%			30%			10%			0
ρ_w	50%	30%	10%	50%	30%	10%	50%	30%	10%	50%	30%	10%	50%	30%	10%	0
ρ_{fc}	20%			20%			20%			20%			20%			0
RCR	RCR:Room Cavity Ratio						Wall Exitance Coefficients (WEC)									
0.0																
1.0	.293	.167	.053	.286	.163	.052	.273	.156	.050	.261	.150	.048	.249	.145	.047	
2.0	.278	.152	.047	.272	.150	.046	.260	.145	.045	.250	.140	.044	.240	.136	.043	
3.0	.259	.138	.041	.253	.136	.041	.243	.132	.040	.234	.128	.039	.225	.124	.039	
4.0	.240	.124	.037	.235	.123	.036	.226	.120	.036	.217	.117	.035	.210	.114	.035	
5.0	.222	.113	.033	.218	.112	.033	.210	.109	.032	.202	.107	.032	.195	.104	.031	
6.0	.207	.104	.030	.203	.102	.029	.196	.100	.029	.189	.098	.029	.183	.096	.029	
7.0	.193	.095	.027	.189	.094	.027	.183	.092	.027	.177	.091	.026	.171	.089	.026	
8.0	.180	.088	.025	.177	.087	.025	.172	.086	.024	.166	.084	.024	.161	.083	.024	
9.0	.169	.082	.023	.167	.081	.023	.161	.080	.023	.157	.079	.022	.152	.077	.022	
10.0	.159	.076	.021	.157	.076	.021	.152	.075	.021	.148	.074	.021	.144	.072	.021	

ρ_{CC}	80%			70%			50%			30%			10%			0
ρ_w	50%	30%	10%	50%	30%	10%	50%	30%	10%	50%	30%	10%	50%	30%	10%	0
ρ_{fc}	20%			20%			20%			20%			20%			0
RCR	RCR:Room Cavity Ratio						Ceiling Cavity Exitance Coefficients (CCEC)									
0.0	.190	.190	.190	.163	.163	.163	.111	.111	.111	.064	.064	.064	.020	.020	.020	
1.0	.179	.156	.136	.153	.134	.117	.105	.092	.081	.060	.053	.047	.019	.017	.015	
2.0	.170	.132	.100	.146	.114	.086	.100	.079	.060	.058	.046	.035	.019	.015	.011	
3.0	.162	.114	.076	.139	.099	.066	.096	.068	.046	.055	.040	.027	.018	.013	.009	
4.0	.154	.101	.060	.133	.087	.052	.091	.061	.037	.053	.036	.022	.017	.012	.007	
5.0	.147	.090	.048	.126	.078	.042	.087	.055	.030	.050	.032	.018	.016	.010	.006	
6.0	.140	.082	.040	.120	.071	.035	.083	.050	.025	.048	.029	.015	.016	.010	.005	
7.0	.133	.075	.034	.114	.065	.030	.079	.045	.021	.046	.027	.013	.015	.009	.004	
8.0	.127	.069	.029	.109	.060	.026	.075	.042	.018	.044	.025	.011	.014	.008	.004	
9.0	.121	.064	.026	.104	.056	.022	.072	.039	.016	.042	.023	.010	.014	.008	.003	
10.0	.115	.060	.023	.099	.052	.020	.069	.037	.014	.040	.022	.008	.013	.007	.003	

C Range: 0 - 360DEG
 C Interval: 15.0DEG
 Test Speed: HIGH
 Temperature:25.3°C
 Operators:DAMIN
 Test Date:2024-05-30

γ Range: 0 - 90DEG
 γ Interval: 1.0DEG
 Test System:EVERFINE GO-2000B_V1 SYSTEM V2.00.473
 Humidity:65.0%
 Test Distance:9.401m [K=1.0000]
 Remarks:

UGR(Unified Glare Rating) Table

Test:U:220.38V I:0.0379A P:7.0176W PF:0.8391 Freq:50.00Hz										
Lamp Flux:484.393x1 lm										
NAME:			TYPE:				WEIGHT:			
SPEC.:			DIM.:				SERIAL No.:			
MFR.: EVERFINE			SUR.:				Shielding Angle:			
ceiling/cavity	0.7	0.7	0.5	0.5	0.3	0.7	0.7	0.5	0.5	0.3
walls	0.5	0.3	0.5	0.3	0.3	0.5	0.3	0.5	0.3	0.3
working plane	0.2	0.2	0.2	0.2	0.2	0.2	0.2	0.2	0.2	0.2
Room dimensions	Viewed crosswise					Viewed endwise				
x = 2H y = 2H	24.4	25.8	24.6	26.0	26.2	24.4	25.8	24.6	26.0	26.2
3H	25.9	27.3	26.2	27.5	27.7	25.8	27.1	26.1	27.3	27.6
4H	26.6	27.9	26.9	28.1	28.4	26.2	27.5	26.5	27.7	28.0
6H	27.0	28.3	27.4	28.5	28.8	26.4	27.6	26.7	27.8	28.1
8H	27.2	28.4	27.5	28.7	28.9	26.4	27.6	26.7	27.8	28.1
12H	27.3	28.4	27.6	28.7	29.0	26.4	27.5	26.7	27.8	28.1
4H 2H	25.0	26.3	25.3	26.5	26.8	25.0	26.2	25.3	26.5	26.8
3H	26.7	27.8	27.1	28.1	28.4	26.5	27.7	26.9	28.0	28.3
4H	27.5	28.5	27.8	28.8	29.1	27.1	28.1	27.4	28.4	28.7
6H	28.1	29.0	28.5	29.3	29.7	27.3	28.2	27.7	28.6	29.0
8H	28.3	29.1	28.7	29.5	29.9	27.4	28.2	27.8	28.6	29.0
12H	28.4	29.2	28.8	29.6	30.0	27.4	28.2	27.8	28.6	29.0
8H 4H	27.7	28.5	28.1	28.9	29.3	27.3	28.1	27.7	28.5	28.9
6H	28.4	29.1	28.8	29.5	29.9	27.7	28.4	28.1	28.8	29.2
8H	28.7	29.3	29.1	29.7	30.2	27.8	28.4	28.2	28.8	29.3
12H	28.8	29.4	29.3	29.8	30.3	27.8	28.3	28.3	28.8	29.3
12H 4H	27.7	28.4	28.1	28.8	29.2	27.3	28.1	27.7	28.5	28.9
6H	28.4	29.0	28.9	29.4	29.9	27.7	28.3	28.2	28.8	29.2
8H	28.7	29.2	29.2	29.7	30.2	27.8	28.4	28.3	28.8	29.3
Variations with the observer position at spacings(CIE Pub.117):										
S = 1.0H	+ 0.2 / - 0.2					+ 0.2 / - 0.3				
1.5H	+ 0.1 / - 0.2					+ 0.2 / - 0.3				
2.0H	+ 0.2 / - 0.2					+ 0.2 / - 0.3				

CIE Pub.117, 484.4 lm Total Lamp Luminous Flux Correct (8log(F/F0) = -2.5)
 Area: 0.01 m2

C Range: 0 - 360DEG
 C Interval: 15.0DEG
 Test Speed: HIGH
 Temperature:25.3°C
 Operators:DAMIN
 Test Date:2024-05-30

γ Range: 0 - 90DEG
 γ Interval: 1.0DEG
 Test System:EVERFINE GO-2000B_V1 SYSTEM V2.00.473
 Humidity:65.0%
 Test Distance:9.401m [K=1.0000]
 Remarks:

UTILIZATION FACTORS TABLE

Test:U:220.38V I:0.0379A P:7.0176W PF:0.8391 Freq:50.00Hz Lamp Flux:484.393x1 lm		
NAME:	TYPE:	WEIGHT:
SPEC.:	DIM.:	SERIAL No.:
MFR.: EVERFINE	SUR.:	Shielding Angle:

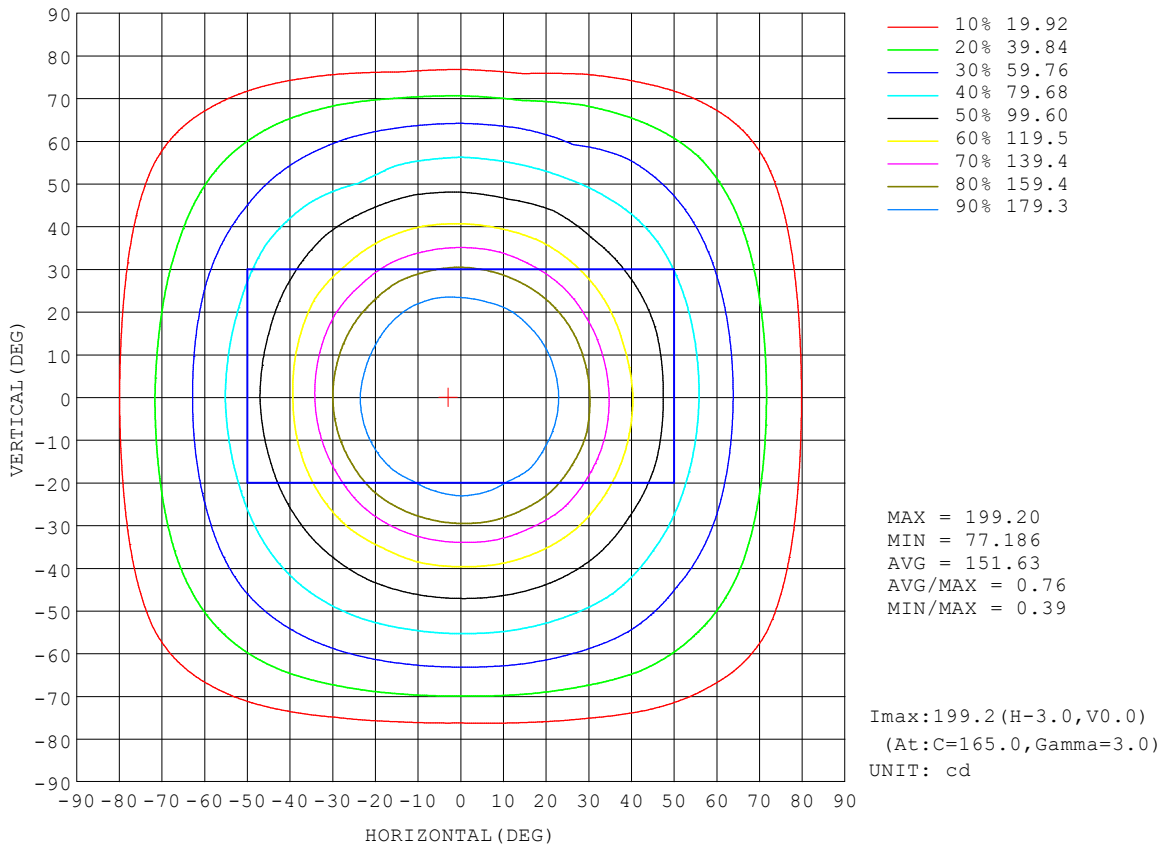
REFLECTANCE										
Ceiling	0.8	0.8	0.8	0.7	0.7	0.7	0.5	0.5	0.5	0
Walls	0.7	0.5	0.3	0.7	0.5	0.3	0.7	0.5	0.3	0
Working plane	0.2	0.2	0.2	0.2	0.2	0.2	0.2	0.2	0.2	0
ROOM INDEX	UTILIZATION FACTORS (PERCENT) $k(RI) \times RCR = 5$									
k = 0.60	60	49	43	60	49	43	59	49	42	36
0.80	70	59	52	69	59	52	68	58	52	45
1.00	78	68	61	77	67	61	75	68	60	53
1.25	85	75	68	84	75	68	81	73	67	60
1.50	90	81	74	88	80	73	85	78	72	65
2.00	96	88	82	95	87	81	91	85	80	72
2.50	100	93	87	98	91	86	94	89	84	76
3.00	103	97	92	101	95	91	97	92	88	80
4.00	107	102	97	105	100	96	101	97	93	85
5.00	109	105	101	107	103	100	103	99	97	88
ROOM INDEX	UF(total)									Direct
According to DIN EN 13032-2 2004			Suspended				SHRNOM = 1.25			

C Range: 0 - 360DEG
 C Interval: 15.0DEG
 Test Speed: HIGH
 Temperature:25.3°C
 Operators:DAMIN
 Test Date:2024-05-30

γ Range: 0 - 90DEG
 γ Interval: 1.0DEG
 Test System:EVERFINE GO-2000B_V1 SYSTEM V2.00.473
 Humidity:65.0%
 Test Distance:9.401m [K=1.0000]
 Remarks:

ISOCANDELA DIAGRAM

Test:U:220.38V I:0.0379A P:7.0176W PF:0.8391 Freq:50.00Hz Lamp Flux:484.393x1 lm		
NAME:	TYPE:	WEIGHT:
SPEC.:	DIM.:	SERIAL No.:
MFR.: EVERFINE	SUR.:	Shielding Angle:

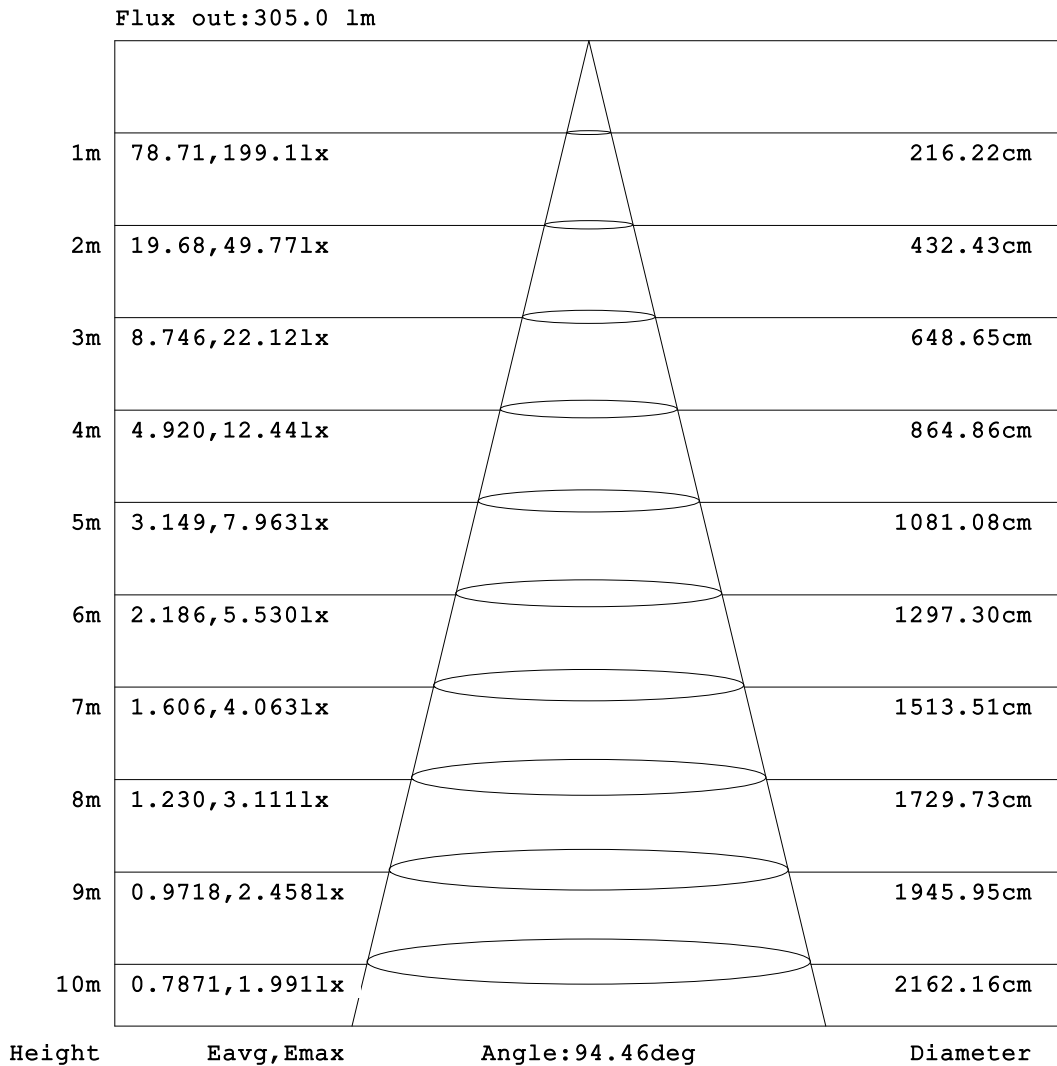


C Range: 0 - 360DEG
 C Interval: 15.0DEG
 Test Speed: HIGH
 Temperature:25.3°C
 Operators:DAMIN
 Test Date:2024-05-30

γ Range: 0 - 90DEG
 γ Interval: 1.0DEG
 Test System:EVERFINE GO-2000B_V1 SYSTEM V2.00.473
 Humidity:65.0%
 Test Distance:9.401m [K=1.0000]
 Remarks:

AAI Figure

Test:U:220.38V I:0.0379A P:7.0176W PF:0.8391 Freq:50.00Hz Lamp Flux:484.393x1 lm		
NAME:	TYPE:	WEIGHT:
SPEC.:	DIM.:	SERIAL No.:
MFR.: EVERFINE	SUR.:	Shielding Angle:



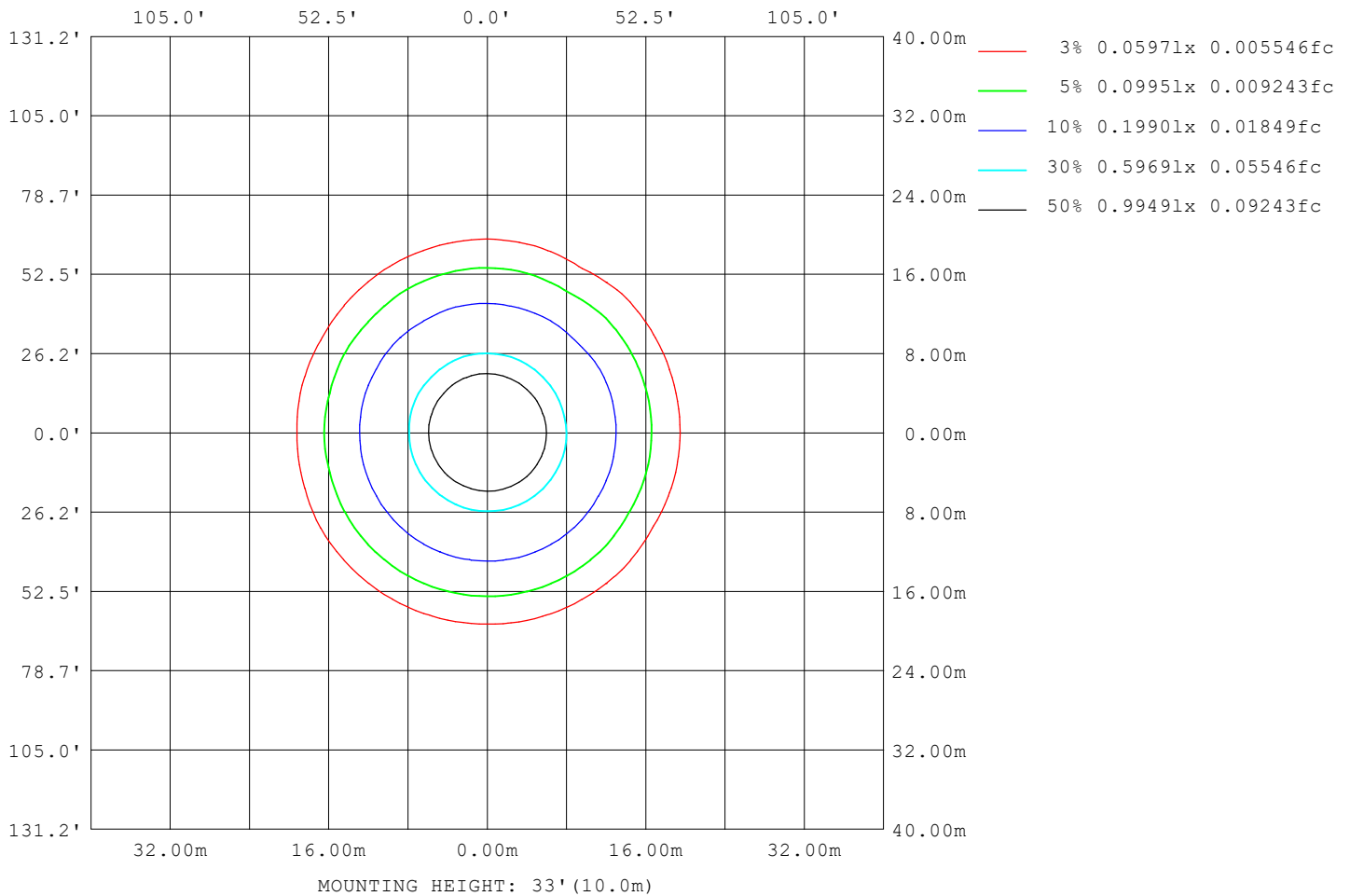
Note:The Curves indicate the illuminated area and the average illumination when the luminaire is at different distance.

C Range: 0 - 360DEG
 C Interval: 15.0DEG
 Test Speed: HIGH
 Temperature:25.3°C
 Operators:DAMIN
 Test Date:2024-05-30

γ Range: 0 - 90DEG
 γ Interval: 1.0DEG
 Test System:EVERFINE GO-2000B_V1 SYSTEM V2.00.473
 Humidity:65.0%
 Test Distance:9.401m [K=1.0000]
 Remarks:

ISOLUX DIAGRAM

Test:U:220.38V I:0.0379A P:7.0176W PF:0.8391 Freq:50.00Hz Lamp Flux:484.393x1 lm		
NAME:	TYPE:	WEIGHT:
SPEC.:	DIM.:	SERIAL No.:
MFR.: EVERFINE	SUR.:	Shielding Angle:



C Range: 0 - 360DEG
 C Interval: 15.0DEG
 Test Speed: HIGH
 Temperature:25.3°C
 Operators:DAMIN
 Test Date:2024-05-30

γ Range: 0 - 90DEG
 γ Interval: 1.0DEG
 Test System:EVERFINE GO-2000B_V1 SYSTEM V2.00.473
 Humidity:65.0%
 Test Distance:9.401m [K=1.0000]
 Remarks:

LED Avg.L Report

Test:U:220.38V I:0.0379A P:7.0176W PF:0.8391 Freq:50.00Hz Lamp Flux:484.393x1 lm		
NAME:	TYPE:	WEIGHT:
SPEC.:	DIM.:	SERIAL No.:
MFR.: EVERFINE	SUR.:	Shielding Angle:

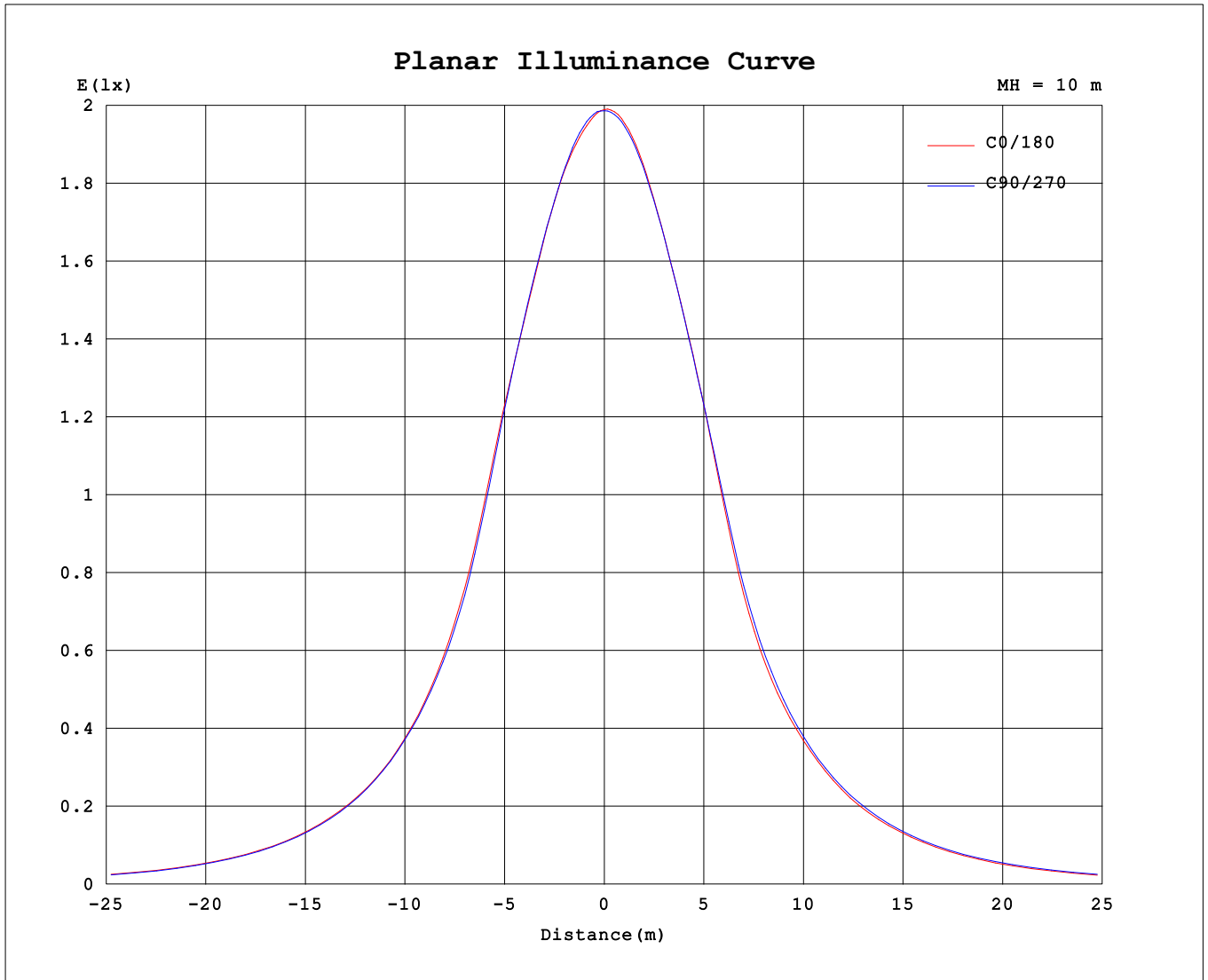
AvgL	cd/m2
L_0~180 (65) av	13105
L_0~180 (75) av	12188
L_0~180 (85) av	9149
L_90~270 (65) av	13283
L_90~270 (75) av	9270
L_90~270 (85) av	3764
L_45 (65) av	13331
L_45 (75) av	11011
L_45 (85) av	5681

Standard: GB/T 29293-2012

C Range: 0 - 360DEG
 C Interval: 15.0DEG
 Test Speed: HIGH
 Temperature:25.3°C
 Operators:DAMIN
 Test Date:2024-05-30

γ Range: 0 - 90DEG
 γ Interval: 1.0DEG
 Test System:EVERFINE GO-2000B_V1 SYSTEM V2.00.473
 Humidity:65.0%
 Test Distance:9.401m [K=1.0000]
 Remarks:

Planar Illuminance Curve



C Range: 0 - 360DEG
 C Interval: 15.0DEG
 Test Speed: HIGH
 Temperature: 25.3°C
 Operators: DAMIN
 Test Date: 2024-05-30

γ Range: 0 - 90DEG
 γ Interval: 1.0DEG
 Test System: EVERFINE GO-2000B_V1 SYSTEM V2.00.473
 Humidity: 65.0%
 Test Distance: 9.401m [K=1.0000]
 Remarks:

LUMINOUS DISTRIBUTION INTENSITY DATA

Test:U:220.38V I:0.0379A P:7.0176W PF:0.8391 Freq:50.00Hz Lamp Flux:484.393x1 lm		
NAME:	TYPE:	WEIGHT:
SPEC.:	DIM.:	SERIAL No.:
MFR.: EVERFINE	SUR.:	Shielding Angle:

Table--1

UNIT: cd

γ (DEG) \ C (DEG)	0	15	30	45	60	75	90	105	120	135	150	165	180	195	210	225	240	255	270	
0	199	199	199	199	199	199	199	199	199	199	199	199	199	199	199	199	199	199	199	199
5	197	197	197	197	198	198	198	198	198	199	198	199	199	199	199	199	199	199	198	198
10	195	195	194	194	195	195	196	196	196	196	196	196	196	196	196	196	197	196	196	196
15	191	191	191	190	190	191	191	191	191	191	191	191	191	192	192	192	193	192	192	191
20	184	184	184	184	183	184	185	184	184	184	184	185	185	185	185	186	186	186	186	185
25	175	175	175	175	174	175	175	174	174	176	176	176	176	176	176	176	177	177	177	176
30	160	162	160	160	159	158	158	157	157	158	157	159	159	159	159	160	161	161	161	161
35	138	139	138	138	136	137	135	135	135	135	133	135	136	137	138	138	140	140	140	140
40	120	120	119	120	119	119	119	118	117	118	118	118	117	119	121	120	121	122	122	122
45	106	106	105	105	106	105	105	105	104	104	103	104	104	104	106	106	107	108	107	107
50	93.3	93.5	91.9	93.1	92.9	92.9	92.5	92.3	92.5	91.7	91.8	90.9	91.7	92.1	91.9	94.6	94.4	95.5	94.6	94.6
55	81.6	80.4	79.9	81.0	80.8	80.9	80.5	80.3	80.5	80.2	79.6	78.9	79.9	79.4	80.6	80.2	77.5	81.9	82.6	82.6
60	69.4	68.8	66.8	68.8	68.4	68.5	68.1	68.0	68.2	68.3	68.1	66.7	67.5	67.0	67.5	67.7	69.5	70.3	70.4	70.4
65	56.7	56.3	55.0	55.9	55.4	55.3	54.8	54.9	55.3	55.7	55.9	56.1	54.1	55.1	54.6	56.1	57.2	57.2	57.5	57.5
70	43.9	43.6	42.5	42.8	41.3	40.6	39.7	40.2	41.2	42.5	43.1	43.8	42.7	42.3	42.3	43.6	43.8	42.4	42.1	42.1
75	31.4	31.2	29.6	28.4	26.0	24.4	23.3	23.8	25.3	27.7	29.9	31.3	31.7	28.5	30.4	29.2	27.5	24.7	24.7	24.7
80	19.6	18.9	16.0	14.8	12.9	12.1	11.6	11.9	12.5	14.2	15.8	18.7	19.7	18.9	16.1	15.1	13.7	12.2	12.6	12.6
85	8.27	6.66	5.22	4.64	3.86	3.53	3.09	3.33	3.64	4.51	4.96	6.01	7.68	6.10	5.00	5.35	4.86	3.83	3.48	3.48
90	0.51	0.46	0.41	0.35	0.34	0.33	0.36	0.35	0.41	0.40	0.46	0.45	0.51	0.52	0.48	0.48	0.41	0.45	0.45	0.45

C Range: 0 - 360DEG
 C Interval: 15.0DEG
 Test Speed: HIGH
 Temperature:25.3°C
 Operators:DAMIN
 Test Date:2024-05-30

γ Range: 0 - 90DEG
 γ Interval: 1.0DEG
 Test System:EVERFINE GO-2000B_V1 SYSTEM V2.00.473
 Humidity:65.0%
 Test Distance:9.401m [K=1.0000]
 Remarks:

LUMINOUS DISTRIBUTION INTENSITY DATA

Test:U:220.38V I:0.0379A P:7.0176W PF:0.8391 Freq:50.00Hz Lamp Flux:484.393x1 lm		
NAME:	TYPE:	WEIGHT:
SPEC.:	DIM.:	SERIAL No.:
MFR.: EVERFINE	SUR.:	Shielding Angle:

Table--2

UNIT: cd

C (DEG) γ (DEG)	285	300	315	330	345															
0	199	199	199	199	199															
5	198	197	197	197	197															
10	195	195	195	195	195															
15	190	191	191	191	191															
20	185	185	185	184	184															
25	175	175	175	175	175															
30	160	160	160	160	160															
35	140	138	138	137	137															
40	121	121	120	119	119															
45	106	107	105	105	106															
50	93.3	93.8	90.9	93.8	94.2															
55	81.4	80.7	80.7	82.2	82.2															
60	69.5	65.6	70.5	70.0	69.8															
65	56.6	55.8	57.7	57.4	57.0															
70	40.5	43.6	44.2	44.5	44.2															
75	23.3	27.1	28.7	30.9	31.6															
80	11.4	14.0	15.1	16.5	18.7															
85	4.14	4.85	5.30	5.95	6.57															
90	0.46	0.46	0.49	0.49	0.55															

C Range: 0 - 360DEG	γ Range: 0 - 90DEG
C Interval: 15.0DEG	γ Interval: 1.0DEG
Test Speed: HIGH	Test System:EVERFINE GO-2000B_V1 SYSTEM V2.00.473
Temperature:25.3°C	Humidity:65.0%
Operators:DAMIN	Test Distance:9.401m [K=1.0000]
Test Date:2024-05-30	Remarks: