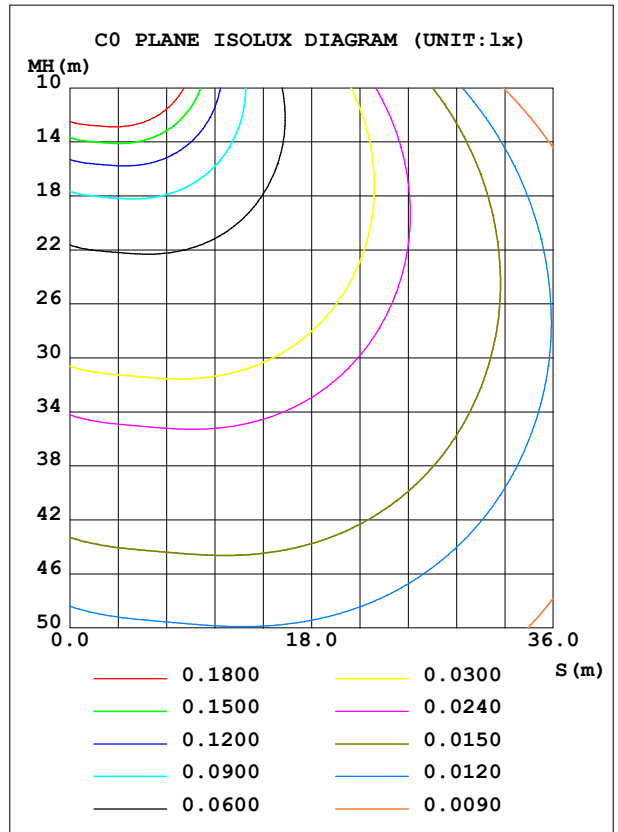
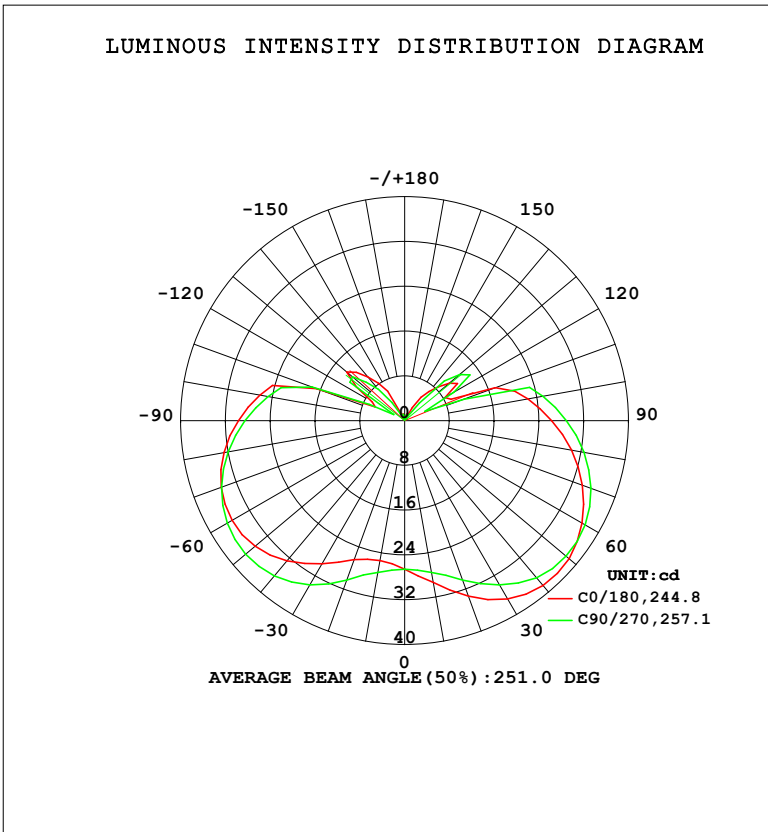


LUMINAIRE PHOTOMETRIC TEST REPORT

| | | |
|---|-------|------------------|
| Test:U:220.41V I:0.0410A P:4.5619W PF:0.5052 Freq:50.00Hz Lamp Flux:284.374x1 lm | | |
| NAME: | TYPE: | WEIGHT: |
| SPEC.: | DIM.: | SERIAL No.: |
| MFR.: EVERFINE | SUR.: | Shielding Angle: |

| DATA OF LAMP | | PHOTOMETRIC DATA | | | | Eff: 62.34 lm/W |
|------------------|---------|-----------------------|---------|--------------------|------------|-----------------|
| MODEL | 拉尾泡 | I _{max} (cd) | 39.13 | S/MH(C0/180) | 1.85 | |
| NOMINAL POWER(W) | 5 | LOR(%) | 100.0 | S/MH(C90/270) | 1.98 | |
| RATED VOLTAGE(V) | 220 | TOTAL FLUX(lm) | 284.37 | η UP, DN(C0-180) | 12.2, 37.9 | |
| NOMINAL FLUX(lm) | 284.374 | CIE CLASS | SEMI-D. | η UP, DN(C180-360) | 12.6, 37.3 | |
| LAMPS INSIDE | 1 | η up (%) | 24.9 | CIBSE SHR NOM | 2.00 | |
| TEST VOLTAGE(V) | 219.5 | η down (%) | 75.1 | CIBSE SHR MAX | 2.00 | |



C Range: 0 - 360DEG
 C Interval: 22.5DEG
 Test Speed: HIGH
 Temperature: 25.3°C
 Operators: DAMIN
 Test Date: 2024-01-12

γ Range: 0 - 180DEG
 γ Interval: 5.0DEG
 Test System: EVERFINE GO-2000B_V1 SYSTEM V2.00.473
 Humidity: 65.0%
 Test Distance: 9.401m [K=1.0000]
 Remarks:

ZONAL FLUX DIAGRAM

ZONAL FLUX DIAGRAM:

| γ | C0 | C45 | C90 | C135 | C180 | C225 | C270 | C315 | γ | Φ zone | Φ total | %lum,lamp |
|----------|-----------------------|--------|--------|--------|--------|--------|--------|--------|----------|-------------|--------------|-----------|
| 10 | 29.30 | 28.86 | 27.55 | 26.13 | 25.40 | 26.08 | 27.52 | 28.70 | 0- 10 | 2.578 | 2.578 | 0.91,0.91 |
| 20 | 33.38 | 32.65 | 30.30 | 27.91 | 26.42 | 27.52 | 30.32 | 32.49 | 10- 20 | 8.160 | 10.74 | 3.78,3.78 |
| 30 | 36.76 | 36.24 | 33.88 | 31.34 | 29.50 | 30.81 | 33.88 | 36.27 | 20- 30 | 14.80 | 25.53 | 8.98,8.98 |
| 40 | 38.43 | 38.51 | 36.66 | 34.64 | 32.70 | 33.85 | 36.19 | 38.65 | 30- 40 | 22.00 | 47.54 | 16.7,16.7 |
| 50 | 38.34 | 39.13 | 37.61 | 36.70 | 34.90 | 35.49 | 37.08 | 38.81 | 40- 50 | 28.54 | 76.08 | 26.8,26.8 |
| 60 | 36.61 | 37.58 | 37.23 | 36.67 | 35.60 | 35.72 | 36.60 | 37.44 | 50- 60 | 33.27 | 109.4 | 38.5,38.5 |
| 70 | 33.77 | 35.03 | 35.41 | 35.42 | 34.89 | 34.74 | 34.80 | 34.93 | 60- 70 | 35.66 | 145.0 | 51,51 |
| 80 | 30.25 | 31.62 | 32.52 | 32.92 | 32.76 | 32.52 | 32.00 | 31.61 | 70- 80 | 35.53 | 180.5 | 63.5,63.5 |
| 90 | 26.24 | 27.77 | 28.90 | 29.58 | 29.67 | 29.44 | 28.53 | 27.74 | 80- 90 | 33.11 | 213.7 | 75.1,75.1 |
| 100 | 22.39 | 23.76 | 25.07 | 25.88 | 26.31 | 24.62 | 24.80 | 23.77 | 90-100 | 29.06 | 242.7 | 85.3,85.3 |
| 110 | 17.23 | 1.229 | 11.33 | 1.012 | 16.84 | 1.497 | 17.60 | 1.637 | 100-110 | 19.78 | 262.5 | 92.3,92.3 |
| 120 | 8.336 | 6.892 | 10.21 | 11.45 | 6.670 | 9.894 | 2.247 | 6.936 | 110-120 | 7.557 | 270.0 | 95,95 |
| 130 | 10.48 | 2.186 | 12.88 | 2.840 | 13.53 | 7.834 | 12.21 | 3.728 | 120-130 | 7.244 | 277.3 | 97.5,97.5 |
| 140 | 6.820 | 0.4623 | 4.130 | 0.4991 | 10.16 | 1.794 | 7.345 | 0.6577 | 130-140 | 4.775 | 282.1 | 99.2,99.2 |
| 150 | 2.760 | 0.3542 | 0.5369 | 0.3633 | 6.130 | 0.3901 | 0.9009 | 0.3755 | 140-150 | 1.809 | 283.9 | 99.8,99.8 |
| 160 | 1.355 | 1.860 | 0.3417 | 1.994 | 0.6860 | 0.4997 | 0.3845 | 0.4886 | 150-160 | 0.2952 | 284.2 | 99.9,99.9 |
| 170 | 0.3527 | 0.3181 | 0.3355 | 0.3264 | 0.3527 | 0.3421 | 0.3356 | 0.3386 | 160-170 | 0.1796 | 284.3 | 100,100 |
| 180 | 0.3299 | 0.3241 | 0.3173 | 0.3263 | 0.3527 | 0.3421 | 0.3356 | 0.3386 | 170-180 | 0.0319 | 284.4 | 100,100 |
| DEG | LUMINOUS INTENSITY:cd | | | | | | | | | UNIT:lm | | |

Conical surface Flux(90deg): 61.084 lm

%lum = 21.5%

%lamp = 21.5%

Conical surface Flux(130deg): 127.04 lm

%lum = 44.7%

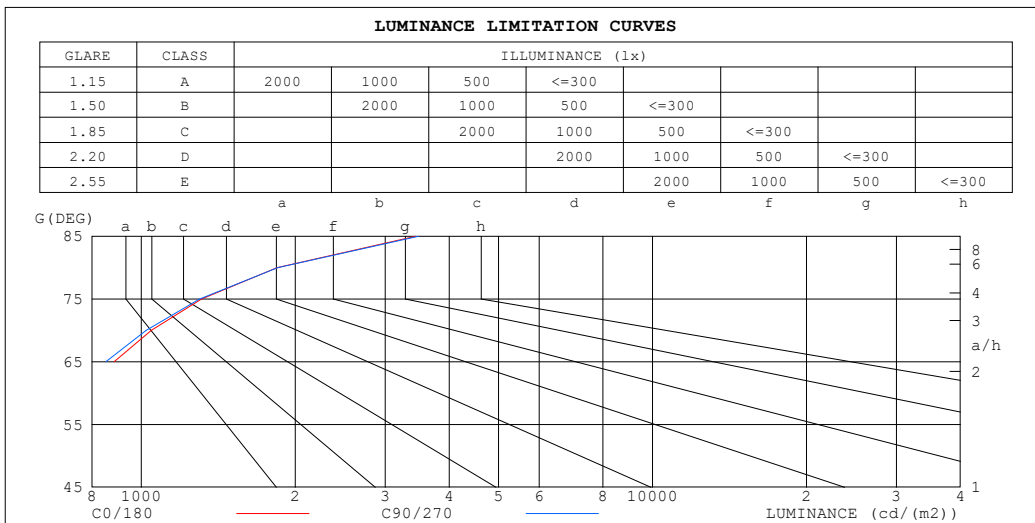
%lamp = 44.7%

C Range: 0 - 360DEG
 C Interval: 22.5DEG
 Test Speed: HIGH
 Temperature:25.3°C
 Operators:DAMIN
 Test Date:2024-01-12

γ Range: 0 - 180DEG
 γ Interval: 5.0DEG
 Test System:EVERFINE GO-2000B_V1 SYSTEM V2.00.473
 Humidity:65.0%
 Test Distance:9.401m [K=1.0000]
 Remarks:

LUMINANCE LIMITATION CURVES

| | | |
|---|-------|------------------|
| Test:U:220.41V I:0.0410A P:4.5619W PF:0.5052 Freq:50.00Hz Lamp Flux:284.374x1 lm | | |
| NAME: | TYPE: | WEIGHT: |
| SPEC.: | DIM.: | SERIAL No.: |
| MFR.: EVERFINE | SUR.: | Shielding Angle: |



| LUMINANCE cd/(m2) | | |
|-------------------|--------|---------|
| G (DEG) | C0/180 | C90/270 |
| 85 | 3439 | 3485 |
| 80 | 1844 | 1848 |
| 75 | 1311 | 1299 |
| 70 | 1045 | 1022 |
| 65 | 884 | 852 |
| 60 | 775 | 735 |
| 55 | 695 | 647 |
| 50 | 631 | 577 |
| 45 | 578 | 522 |

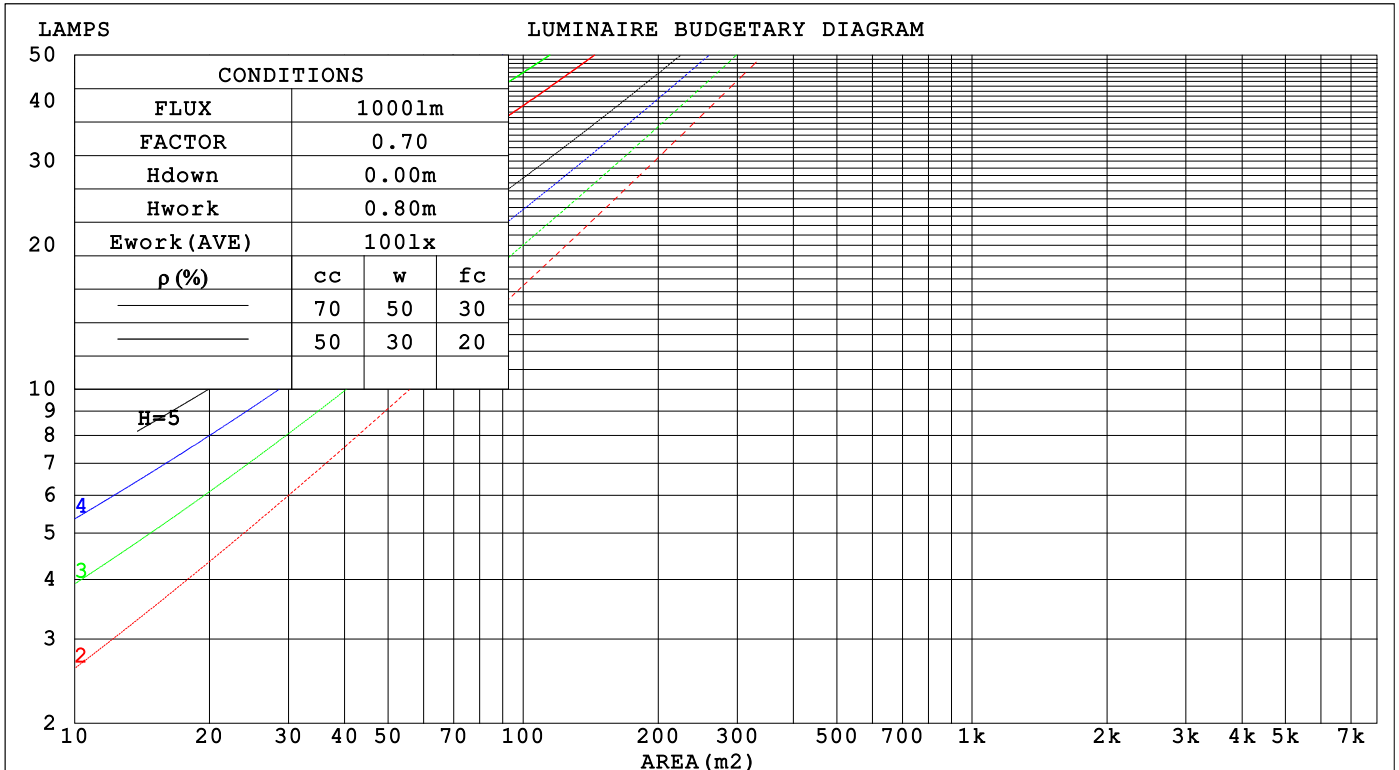
C Range: 0 - 360DEG
 C Interval: 22.5DEG
 Test Speed: HIGH
 Temperature:25.3°C
 Operators:DAMIN
 Test Date:2024-01-12

γ Range: 0 - 180DEG
 γ Interval: 5.0DEG
 Test System:EVERFINE GO-2000B_V1 SYSTEM V2.00.473
 Humidity:65.0%
 Test Distance:9.401m [K=1.0000]
 Remarks:

CU AND LUMINAIRE BUDGETARY ESTIMATE DIAGRAM

| | | |
|---|-------|------------------|
| Test:U:220.41V I:0.0410A P:4.5619W PF:0.5052 Freq:50.00Hz Lamp Flux:284.374x1 lm | | |
| NAME: | TYPE: | WEIGHT: |
| SPEC.: | DIM.: | SERIAL No.: |
| MFR.: EVERFINE | SUR.: | Shielding Angle: |

| ρcc | 80% | | | 70% | | | 50% | | | 30% | | | 10% | | | 0 |
|------|---------------------------------|------|------|------|------|------|-----|-----|-----|-----|-----|-----|-----|-----|-----|-----|
| ρw | 50% | 30% | 10% | 50% | 30% | 10% | 50% | 30% | 10% | 50% | 30% | 10% | 50% | 30% | 10% | 0 |
| ρfc | 20% | | | 20% | | | 20% | | | 20% | | | 20% | | | 0 |
| RCR | RCR:Room Cavity Ratio | | | | | | | | | | | | | | | |
| | Coefficients of Utilization(CU) | | | | | | | | | | | | | | | |
| 0.0 | 1.13 | 1.13 | 1.13 | 1.08 | 1.08 | 1.08 | .97 | .97 | .97 | .88 | .88 | .88 | .79 | .79 | .79 | .75 |
| 1.0 | .90 | .84 | .79 | .86 | .80 | .75 | .77 | .72 | .68 | .68 | .65 | .61 | .61 | .58 | .55 | .51 |
| 2.0 | .76 | .67 | .59 | .72 | .64 | .57 | .64 | .57 | .52 | .57 | .51 | .47 | .50 | .46 | .42 | .38 |
| 3.0 | .65 | .55 | .47 | .61 | .52 | .45 | .54 | .47 | .41 | .48 | .42 | .37 | .42 | .37 | .33 | .29 |
| 4.0 | .56 | .46 | .38 | .53 | .44 | .36 | .47 | .39 | .33 | .42 | .35 | .30 | .37 | .31 | .27 | .24 |
| 5.0 | .49 | .39 | .31 | .46 | .37 | .30 | .41 | .34 | .27 | .37 | .30 | .25 | .32 | .27 | .22 | .19 |
| 6.0 | .44 | .34 | .27 | .41 | .32 | .25 | .37 | .29 | .23 | .33 | .26 | .21 | .29 | .23 | .19 | .16 |
| 7.0 | .39 | .29 | .23 | .37 | .28 | .22 | .33 | .26 | .20 | .30 | .23 | .18 | .26 | .21 | .16 | .14 |
| 8.0 | .35 | .26 | .20 | .33 | .25 | .19 | .30 | .23 | .17 | .27 | .20 | .16 | .24 | .18 | .14 | .12 |
| 9.0 | .32 | .23 | .17 | .30 | .22 | .17 | .27 | .20 | .15 | .25 | .18 | .14 | .22 | .16 | .13 | .10 |
| 10.0 | .29 | .21 | .15 | .28 | .20 | .15 | .25 | .18 | .14 | .23 | .17 | .12 | .20 | .15 | .11 | .09 |



C Range: 0 - 360DEG
 C Interval: 22.5DEG
 Test Speed: HIGH
 Temperature:25.3°C
 Operators:DAMIN
 Test Date:2024-01-12

γ Range: 0 - 180DEG
 γ Interval: 5.0DEG
 Test System:EVERFINE GO-2000B_V1 SYSTEM V2.00.473
 Humidity:65.0%
 Test Distance:9.401m [K=1.0000]
 Remarks:

WEC AND CCEC

| | | | | | | | | |
|---|--|--|-------|--|--|------------------|--|--|
| Test:U:220.41V I:0.0410A P:4.5619W PF:0.5052 Freq:50.00Hz | | | | | | | | |
| Lamp Flux:284.374x1 lm | | | | | | | | |
| NAME: | | | TYPE: | | | WEIGHT: | | |
| SPEC.: | | | DIM.: | | | SERIAL No.: | | |
| MFR.: EVERFINE | | | SUR.: | | | Shielding Angle: | | |

| ρ_{CC} | 80% | | | 70% | | | 50% | | | 30% | | | 10% | | | 0 |
|-------------|-----------------------|------|------|------|------|------|----------------------------------|------|------|------|------|------|------|------|------|---|
| ρ_w | 50% | 30% | 10% | 50% | 30% | 10% | 50% | 30% | 10% | 50% | 30% | 10% | 50% | 30% | 10% | 0 |
| ρ_{fc} | 20% | | | 20% | | | 20% | | | 20% | | | 20% | | | 0 |
| RCR | RCR:Room Cavity Ratio | | | | | | Wall Exitance Coefficients (WEC) | | | | | | | | | |
| 0.0 | | | | | | | | | | | | | | | | |
| 1.0 | .452 | .257 | .081 | .437 | .250 | .079 | .409 | .235 | .075 | .384 | .221 | .071 | .360 | .209 | .067 | |
| 2.0 | .376 | .206 | .063 | .362 | .200 | .061 | .337 | .187 | .058 | .313 | .176 | .055 | .291 | .165 | .052 | |
| 3.0 | .326 | .174 | .052 | .314 | .168 | .051 | .291 | .157 | .048 | .269 | .147 | .045 | .249 | .138 | .043 | |
| 4.0 | .289 | .150 | .044 | .278 | .145 | .043 | .256 | .136 | .041 | .237 | .127 | .038 | .219 | .119 | .036 | |
| 5.0 | .259 | .132 | .038 | .249 | .128 | .037 | .230 | .120 | .035 | .212 | .112 | .033 | .195 | .104 | .031 | |
| 6.0 | .235 | .118 | .034 | .226 | .114 | .033 | .208 | .107 | .031 | .192 | .100 | .029 | .177 | .093 | .028 | |
| 7.0 | .215 | .107 | .030 | .207 | .103 | .029 | .191 | .096 | .028 | .176 | .090 | .026 | .161 | .084 | .025 | |
| 8.0 | .199 | .097 | .027 | .191 | .094 | .027 | .176 | .088 | .025 | .162 | .082 | .024 | .149 | .076 | .022 | |
| 9.0 | .184 | .089 | .025 | .177 | .086 | .024 | .163 | .081 | .023 | .150 | .075 | .022 | .138 | .070 | .020 | |
| 10.0 | .172 | .082 | .023 | .165 | .080 | .022 | .152 | .075 | .021 | .140 | .070 | .020 | .129 | .065 | .019 | |

| ρ_{CC} | 80% | | | 70% | | | 50% | | | 30% | | | 10% | | | 0 |
|-------------|-----------------------|------|------|------|------|------|---|------|------|------|------|------|------|------|------|---|
| ρ_w | 50% | 30% | 10% | 50% | 30% | 10% | 50% | 30% | 10% | 50% | 30% | 10% | 50% | 30% | 10% | 0 |
| ρ_{fc} | 20% | | | 20% | | | 20% | | | 20% | | | 20% | | | 0 |
| RCR | RCR:Room Cavity Ratio | | | | | | Ceiling Cavity Exitance Coefficients (CCEC) | | | | | | | | | |
| 0.0 | .380 | .380 | .380 | .325 | .325 | .325 | .222 | .222 | .222 | .127 | .127 | .127 | .041 | .041 | .041 | |
| 1.0 | .381 | .346 | .314 | .326 | .297 | .270 | .223 | .204 | .187 | .128 | .118 | .109 | .041 | .038 | .035 | |
| 2.0 | .376 | .324 | .280 | .322 | .279 | .242 | .221 | .193 | .169 | .127 | .112 | .099 | .041 | .036 | .032 | |
| 3.0 | .369 | .308 | .260 | .316 | .266 | .225 | .217 | .185 | .158 | .125 | .108 | .093 | .040 | .035 | .030 | |
| 4.0 | .361 | .296 | .247 | .310 | .256 | .214 | .213 | .178 | .151 | .123 | .104 | .089 | .040 | .034 | .029 | |
| 5.0 | .353 | .287 | .238 | .303 | .248 | .207 | .209 | .173 | .146 | .121 | .102 | .087 | .039 | .033 | .029 | |
| 6.0 | .345 | .279 | .231 | .297 | .242 | .202 | .205 | .169 | .143 | .119 | .099 | .085 | .038 | .033 | .028 | |
| 7.0 | .338 | .273 | .227 | .290 | .236 | .198 | .201 | .166 | .140 | .117 | .098 | .083 | .038 | .032 | .028 | |
| 8.0 | .331 | .267 | .223 | .285 | .232 | .195 | .197 | .163 | .138 | .115 | .096 | .082 | .037 | .031 | .027 | |
| 9.0 | .324 | .262 | .221 | .279 | .228 | .193 | .193 | .160 | .137 | .113 | .095 | .082 | .036 | .031 | .027 | |
| 10.0 | .318 | .258 | .219 | .274 | .224 | .191 | .190 | .158 | .135 | .111 | .093 | .081 | .036 | .031 | .027 | |

C Range: 0 - 360DEG
 C Interval: 22.5DEG
 Test Speed: HIGH
 Temperature:25.3°C
 Operators:DAMIN
 Test Date:2024-01-12

γ Range: 0 - 180DEG
 γ Interval: 5.0DEG
 Test System:EVERFINE GO-2000B_V1 SYSTEM V2.00.473
 Humidity:65.0%
 Test Distance:9.401m [K=1.0000]
 Remarks:

UGR(Unified Glare Rating) Table

| | | | | | | | | | | |
|---|------------------|------|-------|------|------|----------------|------------------|------|------|------|
| Test:U:220.41V I:0.0410A P:4.5619W PF:0.5052 Freq:50.00Hz | | | | | | | | | | |
| Lamp Flux:284.374x1 lm | | | | | | | | | | |
| NAME: | | | TYPE: | | | | WEIGHT: | | | |
| SPEC.: | | | DIM.: | | | | SERIAL No.: | | | |
| MFR.: EVERFINE | | | SUR.: | | | | Shielding Angle: | | | |
| ceiling/cavity | 0.7 | 0.7 | 0.5 | 0.5 | 0.3 | 0.7 | 0.7 | 0.5 | 0.5 | 0.3 |
| walls | 0.5 | 0.3 | 0.5 | 0.3 | 0.3 | 0.5 | 0.3 | 0.5 | 0.3 | 0.3 |
| working plane | 0.2 | 0.2 | 0.2 | 0.2 | 0.2 | 0.2 | 0.2 | 0.2 | 0.2 | 0.2 |
| Room dimensions | Viewed crosswise | | | | | Viewed endwise | | | | |
| x = 2H y = 2H | 14.9 | 16.3 | 15.5 | 16.9 | 17.6 | 14.6 | 16.0 | 15.2 | 16.6 | 17.3 |
| 3H | 17.8 | 19.0 | 18.4 | 19.7 | 20.5 | 17.6 | 18.8 | 18.2 | 19.5 | 20.3 |
| 4H | 19.3 | 20.6 | 20.0 | 21.2 | 22.0 | 19.2 | 20.4 | 19.8 | 21.1 | 21.9 |
| 6H | 21.1 | 22.2 | 21.7 | 22.9 | 23.7 | 21.0 | 22.2 | 21.7 | 22.8 | 23.6 |
| 8H | 22.0 | 23.2 | 22.7 | 23.9 | 24.7 | 22.0 | 23.1 | 22.7 | 23.8 | 24.6 |
| 12H | 23.1 | 24.2 | 23.8 | 24.9 | 25.7 | 23.1 | 24.2 | 23.8 | 24.9 | 25.7 |
| 4H 2H | 15.8 | 17.0 | 16.4 | 17.7 | 18.4 | 15.6 | 16.8 | 16.2 | 17.5 | 18.3 |
| 3H | 18.8 | 19.9 | 19.5 | 20.6 | 21.4 | 18.7 | 19.8 | 19.4 | 20.5 | 21.3 |
| 4H | 20.6 | 21.6 | 21.3 | 22.3 | 23.1 | 20.4 | 21.5 | 21.2 | 22.2 | 23.0 |
| 6H | 22.5 | 23.4 | 23.2 | 24.1 | 25.0 | 22.4 | 23.3 | 23.1 | 24.1 | 24.9 |
| 8H | 23.5 | 24.4 | 24.3 | 25.1 | 26.0 | 23.5 | 24.3 | 24.2 | 25.1 | 26.0 |
| 12H | 24.7 | 25.5 | 25.5 | 26.3 | 27.2 | 24.7 | 25.5 | 25.5 | 26.3 | 27.2 |
| 8H 4H | 21.2 | 22.1 | 21.9 | 22.8 | 23.7 | 21.1 | 22.0 | 21.9 | 22.7 | 23.6 |
| 6H | 23.4 | 24.1 | 24.2 | 24.9 | 25.8 | 23.3 | 24.1 | 24.1 | 24.9 | 25.8 |
| 8H | 24.6 | 25.3 | 25.4 | 26.1 | 27.1 | 24.6 | 25.3 | 25.4 | 26.1 | 27.0 |
| 12H | 26.1 | 26.7 | 26.9 | 27.5 | 28.4 | 26.1 | 26.7 | 26.9 | 27.5 | 28.4 |
| 12H 4H | 21.4 | 22.2 | 22.1 | 22.9 | 23.8 | 21.3 | 22.1 | 22.0 | 22.9 | 23.8 |
| 6H | 23.7 | 24.3 | 24.5 | 25.1 | 26.1 | 23.6 | 24.3 | 24.4 | 25.1 | 26.0 |
| 8H | 25.0 | 25.6 | 25.8 | 26.4 | 27.4 | 25.0 | 25.6 | 25.8 | 26.4 | 27.4 |
| Variations with the observer position at spacings(CIE Pub.117): | | | | | | | | | | |
| S = 1.0H | + 0.1 / - 0.1 | | | | | + 0.1 / - 0.1 | | | | |
| 1.5H | + 0.2 / - 0.3 | | | | | + 0.2 / - 0.3 | | | | |
| 2.0H | + 0.3 / - 0.4 | | | | | + 0.3 / - 0.4 | | | | |

CIE Pub.117, 284.4 lm Total Lamp Luminous Flux Correct (8log(F/F0) = -4.4)
 Area: 0.1 m2

C Range: 0 - 360DEG
 C Interval: 22.5DEG
 Test Speed: HIGH
 Temperature:25.3°C
 Operators:DAMIN
 Test Date:2024-01-12

γ Range: 0 - 180DEG
 γ Interval: 5.0DEG
 Test System:EVERFINE GO-2000B_V1 SYSTEM V2.00.473
 Humidity:65.0%
 Test Distance:9.401m [K=1.0000]
 Remarks:

UTILIZATION FACTORS TABLE

| | | |
|---|-------|------------------|
| Test:U:220.41V I:0.0410A P:4.5619W PF:0.5052 Freq:50.00Hz Lamp Flux:284.374x1 lm | | |
| NAME: | TYPE: | WEIGHT: |
| SPEC.: | DIM.: | SERIAL No.: |
| MFR.: EVERFINE | SUR.: | Shielding Angle: |

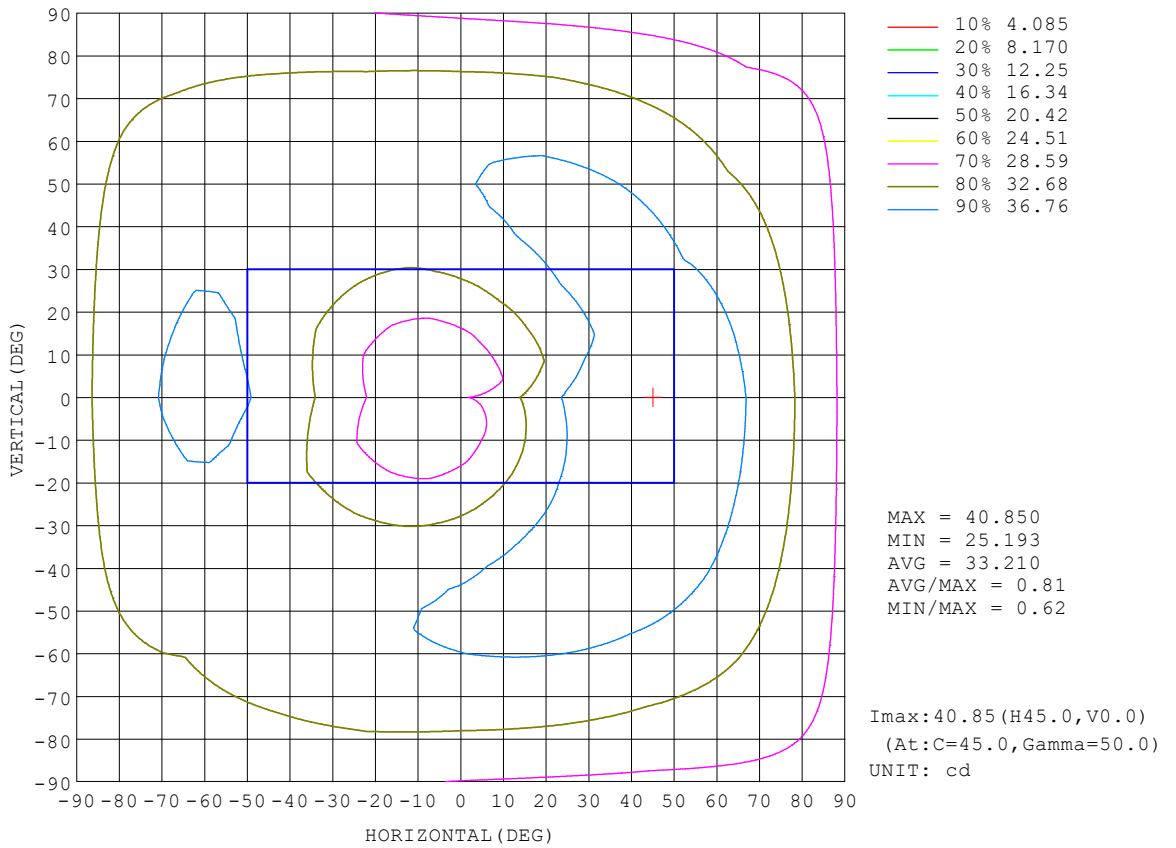
| REFLECTANCE | | | | | | | | | | |
|----------------------------------|--|-----|-----------|-----|-----|-----|---------------|-----|-----|--------|
| Ceiling | 0.8 | 0.8 | 0.8 | 0.7 | 0.7 | 0.7 | 0.5 | 0.5 | 0.5 | 0 |
| Walls | 0.7 | 0.5 | 0.3 | 0.7 | 0.5 | 0.3 | 0.7 | 0.5 | 0.3 | 0 |
| Working plane | 0.2 | 0.2 | 0.2 | 0.2 | 0.2 | 0.2 | 0.2 | 0.2 | 0.2 | 0 |
| ROOM INDEX | UTILIZATION FACTORS (PERCENT) $k(RI) \times RCR = 5$ | | | | | | | | | |
| k = 0.60 | 41 | 27 | 20 | 39 | 27 | 19 | 37 | 26 | 19 | 12 |
| 0.80 | 49 | 35 | 26 | 48 | 34 | 26 | 44 | 33 | 25 | 16 |
| 1.00 | 57 | 42 | 33 | 55 | 41 | 32 | 51 | 42 | 31 | 21 |
| 1.25 | 64 | 49 | 39 | 61 | 48 | 38 | 56 | 45 | 37 | 26 |
| 1.50 | 69 | 55 | 45 | 66 | 53 | 44 | 60 | 49 | 41 | 30 |
| 2.00 | 77 | 64 | 54 | 73 | 61 | 52 | 67 | 57 | 49 | 36 |
| 2.50 | 82 | 69 | 60 | 78 | 67 | 58 | 71 | 62 | 54 | 40 |
| 3.00 | 86 | 75 | 65 | 82 | 72 | 63 | 74 | 66 | 59 | 44 |
| 4.00 | 91 | 81 | 73 | 87 | 78 | 70 | 79 | 71 | 65 | 49 |
| 5.00 | 95 | 86 | 79 | 90 | 82 | 76 | 81 | 75 | 70 | 52 |
| ROOM INDEX | UF(total) | | | | | | | | | Direct |
| According to DIN EN 13032-2 2004 | | | Suspended | | | | SHRNOM = 1.25 | | | |

C Range: 0 - 360DEG
 C Interval: 22.5DEG
 Test Speed: HIGH
 Temperature:25.3°C
 Operators:DAMIN
 Test Date:2024-01-12

γ Range: 0 - 180DEG
 γ Interval: 5.0DEG
 Test System:EVERFINE GO-2000B_V1 SYSTEM V2.00.473
 Humidity:65.0%
 Test Distance:9.401m [K=1.0000]
 Remarks:

ISOCANDELA DIAGRAM

| | | |
|---|-------|------------------|
| Test:U:220.41V I:0.0410A P:4.5619W PF:0.5052 Freq:50.00Hz Lamp Flux:284.374x1 lm | | |
| NAME: | TYPE: | WEIGHT: |
| SPEC.: | DIM.: | SERIAL No.: |
| MFR.: EVERFINE | SUR.: | Shielding Angle: |

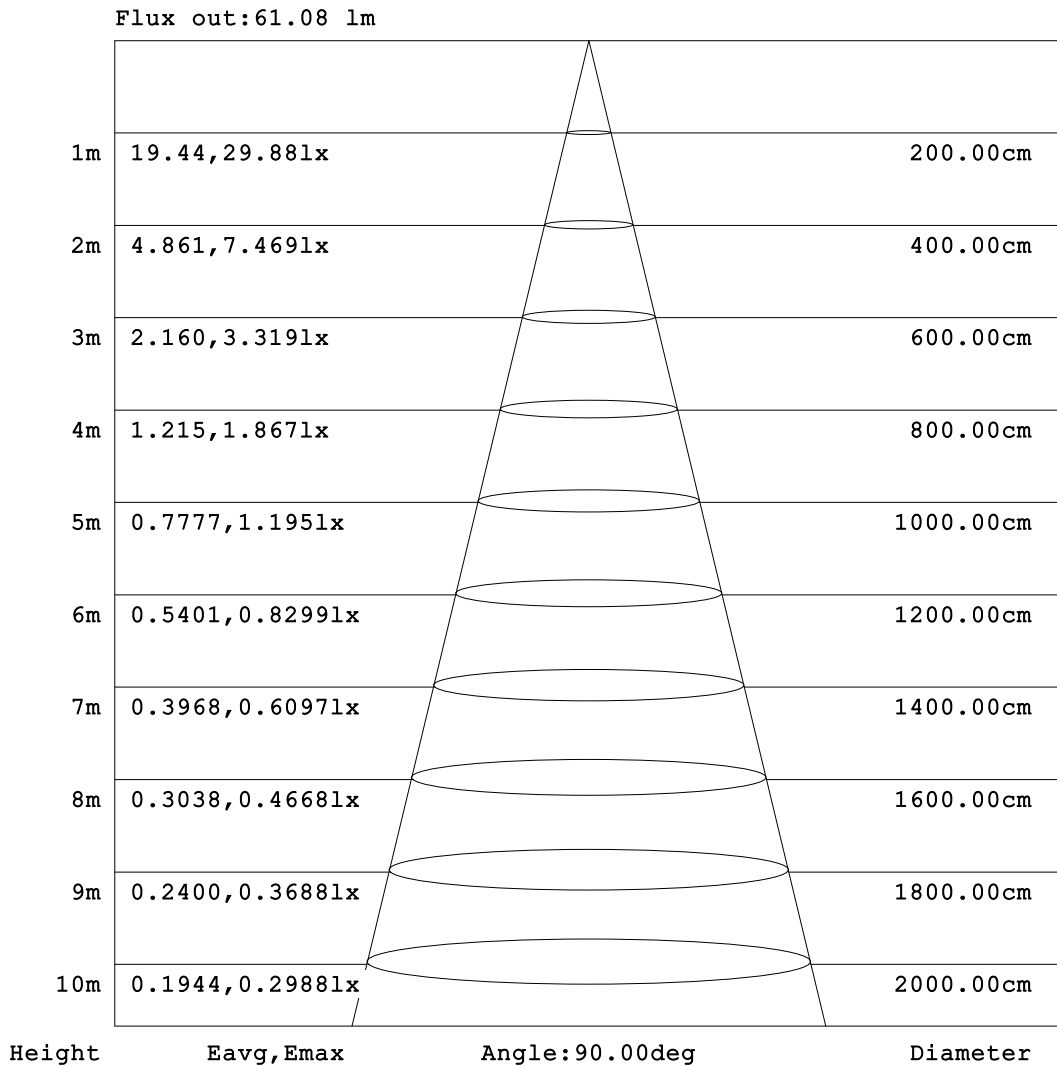


C Range: 0 - 360DEG
 C Interval: 22.5DEG
 Test Speed: HIGH
 Temperature:25.3°C
 Operators:DAMIN
 Test Date:2024-01-12

γ Range: 0 - 180DEG
 γ Interval: 5.0DEG
 Test System:EVERFINE GO-2000B_V1 SYSTEM V2.00.473
 Humidity:65.0%
 Test Distance:9.401m [K=1.0000]
 Remarks:

AAI Figure

| | | |
|---|-------|------------------|
| Test:U:220.41V I:0.0410A P:4.5619W PF:0.5052 Freq:50.00Hz Lamp Flux:284.374x1 lm | | |
| NAME: | TYPE: | WEIGHT: |
| SPEC.: | DIM.: | SERIAL No.: |
| MFR.: EVERFINE | SUR.: | Shielding Angle: |



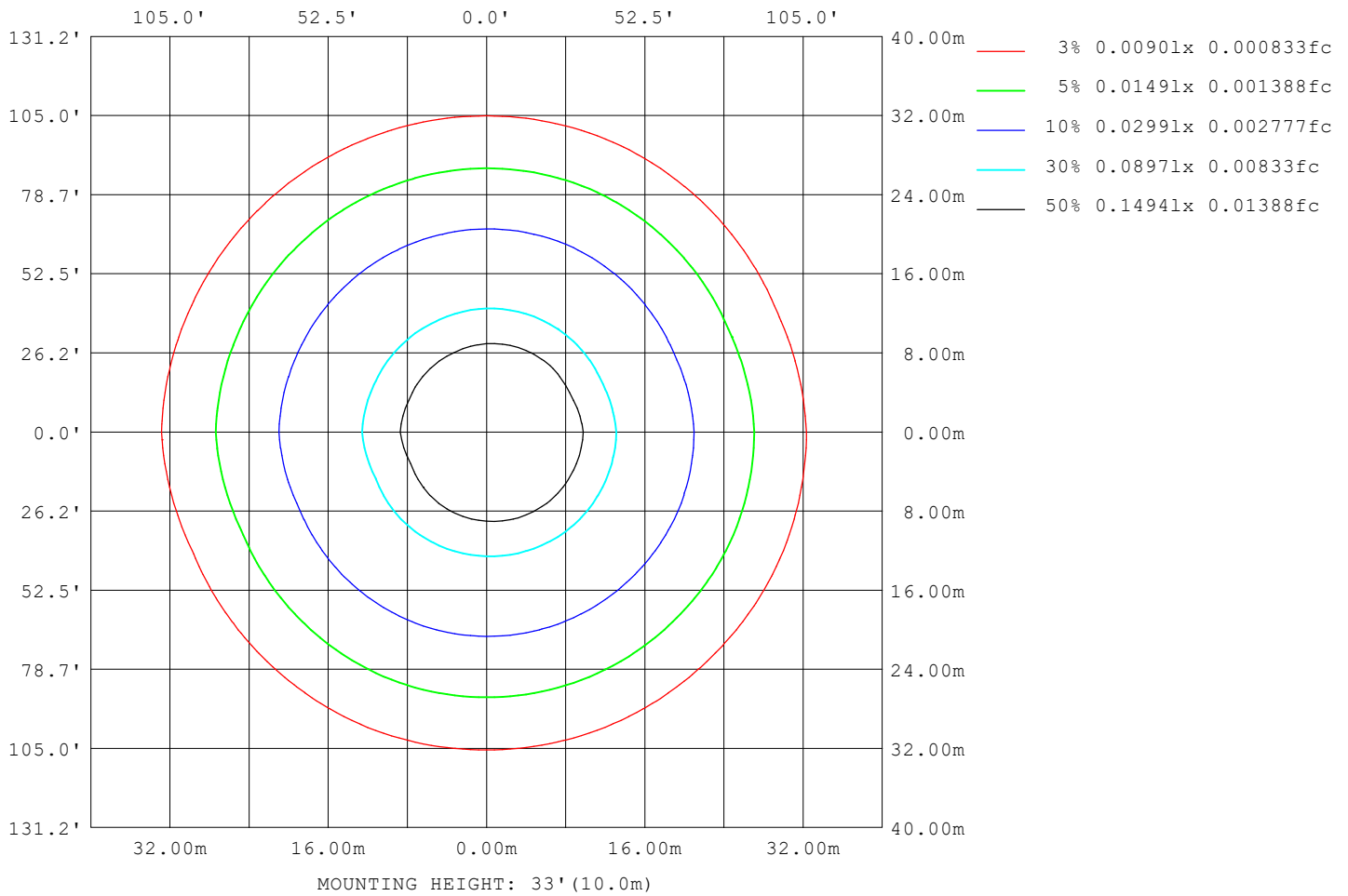
Note:The Curves indicate the illuminated area and the average illumination when the luminaire is at different distance.

C Range: 0 - 360DEG
 C Interval: 22.5DEG
 Test Speed: HIGH
 Temperature:25.3°C
 Operators:DAMIN
 Test Date:2024-01-12

γ Range: 0 - 180DEG
 γ Interval: 5.0DEG
 Test System:EVERFINE GO-2000B_V1 SYSTEM V2.00.473
 Humidity:65.0%
 Test Distance:9.401m [K=1.0000]
 Remarks:

ISOLUX DIAGRAM

| | | |
|---|-------|------------------|
| Test:U:220.41V I:0.0410A P:4.5619W PF:0.5052 Freq:50.00Hz Lamp Flux:284.374x1 lm | | |
| NAME: | TYPE: | WEIGHT: |
| SPEC.: | DIM.: | SERIAL No.: |
| MFR.: EVERFINE | SUR.: | Shielding Angle: |



C Range: 0 - 360DEG
 C Interval: 22.5DEG
 Test Speed: HIGH
 Temperature:25.3°C
 Operators:DAMIN
 Test Date:2024-01-12

γ Range: 0 - 180DEG
 γ Interval: 5.0DEG
 Test System:EVERFINE GO-2000B_V1 SYSTEM V2.00.473
 Humidity:65.0%
 Test Distance:9.401m [K=1.0000]
 Remarks:

LED Avg.L Report

| | | |
|---|-------|------------------|
| Test:U:220.41V I:0.0410A P:4.5619W PF:0.5052 Freq:50.00Hz Lamp Flux:284.374x1 lm | | |
| NAME: | TYPE: | WEIGHT: |
| SPEC.: | DIM.: | SERIAL No.: |
| MFR.: EVERFINE | SUR.: | Shielding Angle: |

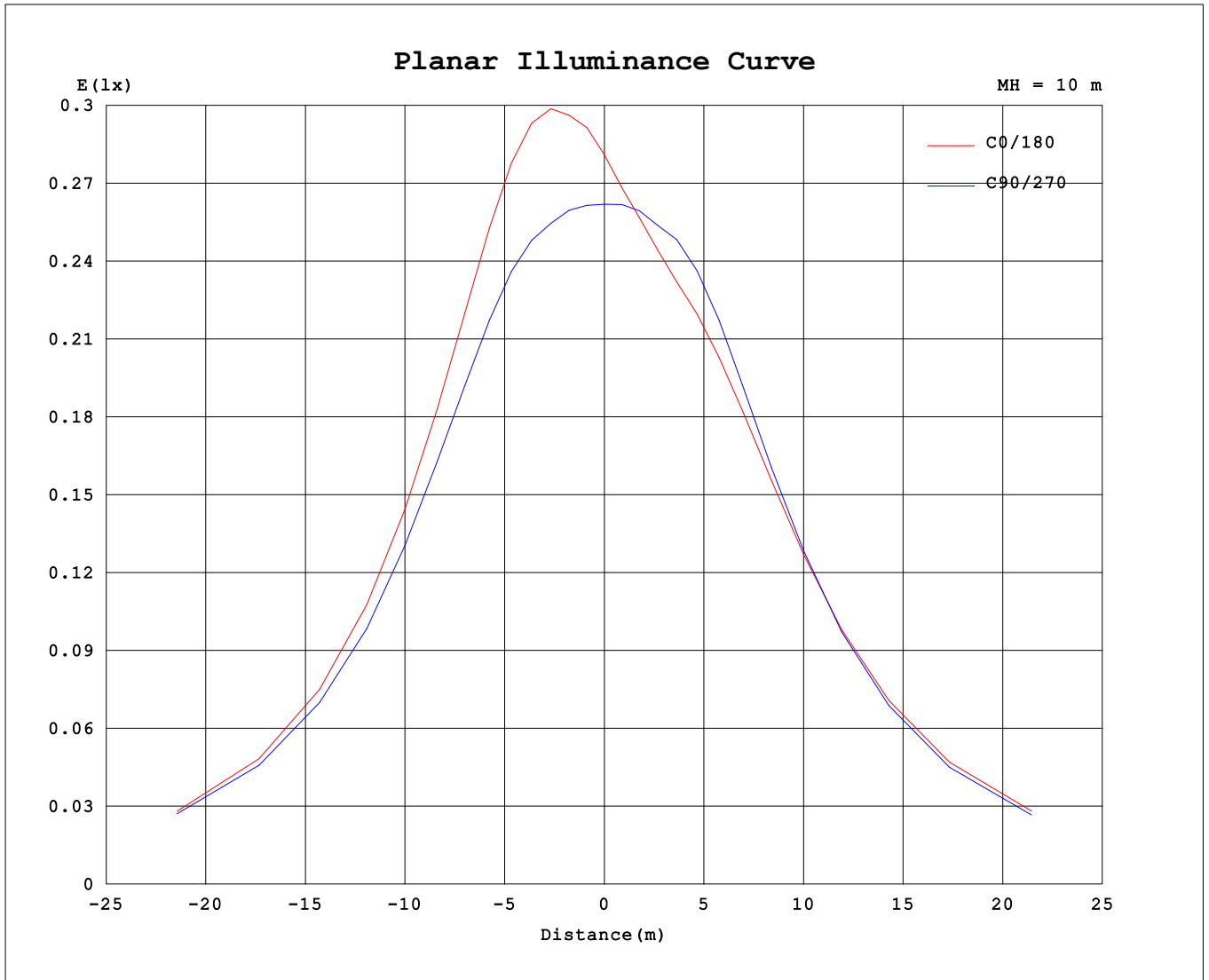
| AvgL | cd/m2 |
|------------------|-------|
| L_0~180 (65) av | 837 |
| L_0~180 (75) av | 1276 |
| L_0~180 (85) av | 3422 |
| L_90~270 (65) av | 856 |
| L_90~270 (75) av | 1305 |
| L_90~270 (85) av | 3506 |
| L_45 (65) av | 854 |
| L_45 (75) av | 1302 |
| L_45 (85) av | 3495 |

Standard: GB/T 29293-2012

C Range: 0 - 360DEG
 C Interval: 22.5DEG
 Test Speed: HIGH
 Temperature:25.3°C
 Operators:DAMIN
 Test Date:2024-01-12

γ Range: 0 - 180DEG
 γ Interval: 5.0DEG
 Test System:EVERFINE GO-2000B_V1 SYSTEM V2.00.473
 Humidity:65.0%
 Test Distance:9.401m [K=1.0000]
 Remarks:

Planar Illuminance Curve



C Range: 0 - 360DEG
 C Interval: 22.5DEG
 Test Speed: HIGH
 Temperature: 25.3°C
 Operators: DAMIN
 Test Date: 2024-01-12

γ Range: 0 - 180DEG
 γ Interval: 5.0DEG
 Test System: EVERFINE GO-2000B_V1 SYSTEM V2.00.473
 Humidity: 65.0%
 Test Distance: 9.401m [K=1.0000]
 Remarks:

LUMINOUS DISTRIBUTION INTENSITY DATA

| | | |
|---|-------|------------------|
| Test:U:220.41V I:0.0410A P:4.5619W PF:0.5052 Freq:50.00Hz Lamp Flux:284.374x1 lm | | |
| NAME: | TYPE: | WEIGHT: |
| SPEC.: | DIM.: | SERIAL No.: |
| MFR.: EVERFINE | SUR.: | Shielding Angle: |

Table--1

UNIT: cd

| C (DEG) \ γ (DEG) | 0 | 22.5 | 45 | 67.5 | 90 | 112.5 | 135 | 157.5 | 180 | 202.5 | 225 | 247.5 | 270 | 292.5 | 315 | 337.5 | | | |
|-------------------|------|------|------|------|-------|-------|------|-------|------|-------|------|-------|------|-------|------|-------|--|--|--|
| 0 | 26.5 | 26.5 | 26.5 | 26.5 | 26.5 | 26.5 | 26.5 | 26.5 | 26.5 | 26.5 | 26.5 | 26.5 | 26.5 | 26.5 | 26.5 | 26.5 | | | |
| 5 | 27.9 | 27.8 | 27.6 | 27.2 | 26.8 | 26.5 | 26.1 | 25.8 | 25.7 | 25.8 | 26.0 | 26.4 | 26.8 | 27.2 | 27.5 | 27.7 | | | |
| 10 | 29.3 | 29.2 | 28.9 | 28.3 | 27.6 | 26.9 | 26.1 | 25.8 | 25.4 | 25.5 | 26.1 | 26.7 | 27.5 | 28.3 | 28.7 | 29.0 | | | |
| 15 | 31.3 | 31.2 | 30.6 | 29.7 | 28.6 | 27.7 | 26.7 | 26.2 | 25.6 | 25.7 | 26.5 | 27.4 | 28.5 | 29.8 | 30.4 | 30.9 | | | |
| 20 | 33.4 | 33.3 | 32.7 | 31.6 | 30.3 | 29.1 | 27.9 | 27.3 | 26.4 | 26.5 | 27.5 | 28.8 | 30.3 | 31.7 | 32.5 | 33.0 | | | |
| 25 | 35.3 | 35.2 | 34.6 | 33.5 | 32.1 | 30.8 | 29.6 | 28.8 | 27.9 | 27.9 | 29.1 | 30.5 | 32.2 | 33.7 | 34.5 | 35.0 | | | |
| 30 | 36.8 | 36.8 | 36.2 | 35.2 | 33.9 | 32.6 | 31.3 | 30.5 | 29.5 | 29.5 | 30.8 | 32.2 | 33.9 | 35.5 | 36.3 | 36.6 | | | |
| 35 | 37.8 | 38.0 | 37.5 | 36.6 | 35.4 | 34.4 | 33.1 | 32.2 | 31.2 | 31.2 | 32.5 | 33.6 | 35.2 | 36.8 | 37.7 | 37.9 | | | |
| 40 | 38.4 | 38.7 | 38.5 | 37.8 | 36.7 | 35.9 | 34.6 | 33.7 | 32.7 | 32.7 | 33.8 | 34.7 | 36.2 | 37.7 | 38.6 | 38.7 | | | |
| 45 | 38.6 | 38.9 | 39.1 | 38.4 | 37.4 | 36.9 | 35.9 | 34.8 | 34.0 | 34.0 | 34.8 | 35.5 | 36.8 | 38.2 | 39.0 | 39.1 | | | |
| 50 | 38.3 | 38.8 | 39.1 | 38.3 | 37.6 | 37.3 | 36.7 | 35.7 | 34.9 | 34.9 | 35.5 | 35.9 | 37.1 | 38.3 | 38.8 | 39.1 | | | |
| 55 | 37.6 | 38.4 | 38.5 | 38.0 | 37.6 | 37.4 | 36.9 | 36.2 | 35.5 | 35.3 | 35.8 | 36.1 | 37.0 | 38.0 | 38.3 | 38.4 | | | |
| 60 | 36.6 | 37.4 | 37.6 | 37.4 | 37.2 | 37.2 | 36.7 | 36.3 | 35.6 | 35.4 | 35.7 | 36.0 | 36.6 | 37.4 | 37.4 | 37.5 | | | |
| 65 | 35.3 | 36.2 | 36.4 | 36.5 | 36.5 | 36.7 | 36.2 | 36.1 | 35.4 | 35.3 | 35.4 | 35.5 | 35.8 | 36.5 | 36.3 | 36.3 | | | |
| 70 | 33.8 | 34.8 | 35.0 | 35.3 | 35.4 | 35.8 | 35.4 | 35.4 | 34.9 | 34.7 | 34.7 | 34.6 | 34.8 | 35.2 | 34.9 | 34.8 | | | |
| 75 | 32.1 | 33.1 | 33.4 | 33.8 | 34.1 | 34.6 | 34.3 | 34.3 | 34.0 | 33.8 | 33.8 | 33.5 | 33.5 | 33.8 | 33.4 | 33.1 | | | |
| 80 | 30.2 | 31.2 | 31.6 | 32.1 | 32.5 | 33.2 | 32.9 | 32.9 | 32.8 | 32.6 | 32.5 | 32.1 | 32.0 | 32.1 | 31.6 | 31.3 | | | |
| 85 | 28.3 | 29.2 | 29.8 | 30.3 | 30.8 | 31.5 | 31.3 | 31.3 | 31.3 | 31.2 | 31.0 | 30.6 | 30.3 | 30.3 | 29.7 | 29.3 | | | |
| 90 | 26.2 | 27.1 | 27.8 | 28.3 | 28.9 | 29.6 | 29.6 | 29.4 | 29.7 | 29.5 | 29.4 | 28.8 | 28.5 | 28.3 | 27.7 | 27.3 | | | |
| 95 | 24.3 | 25.1 | 25.8 | 26.4 | 27.0 | 27.8 | 27.8 | 27.7 | 28.1 | 27.8 | 27.8 | 27.1 | 26.7 | 26.3 | 25.8 | 25.3 | | | |
| 100 | 22.4 | 23.1 | 23.8 | 24.4 | 25.1 | 25.8 | 25.9 | 25.8 | 26.3 | 26.1 | 24.6 | 25.2 | 24.8 | 24.4 | 23.8 | 23.3 | | | |
| 105 | 20.4 | 21.1 | 10.1 | 22.4 | 23.1 | 23.7 | 9.18 | 23.7 | 24.4 | 24.2 | 9.33 | 23.4 | 22.9 | 22.4 | 13.2 | 21.3 | | | |
| 110 | 17.2 | 15.6 | 1.23 | 9.18 | 11.3 | 11.1 | 1.01 | 10.15 | 16.8 | 10.9 | 1.50 | 13.2 | 17.6 | 11.0 | 1.64 | 17.8 | | | |
| 115 | 9.19 | 4.81 | 7.38 | 4.85 | 3.99 | 6.00 | 9.97 | 2.04 | 5.82 | 4.33 | 5.97 | 8.19 | 7.03 | 6.78 | 6.47 | 6.22 | | | |
| 120 | 8.34 | 1.04 | 6.89 | 13.0 | 10.2 | 14.5 | 11.4 | 0.60 | 6.67 | 6.23 | 9.89 | 8.90 | 2.25 | 9.69 | 6.94 | 3.36 | | | |
| 125 | 11.6 | 0.73 | 4.77 | 14.2 | 14.3 | 15.6 | 6.68 | 1.64 | 10.6 | 2.73 | 8.93 | 14.2 | 12.0 | 13.3 | 5.58 | 1.06 | | | |
| 130 | 10.5 | 1.72 | 2.19 | 12.1 | 12.9 | 12.8 | 2.84 | 2.94 | 13.5 | 0.82 | 7.83 | 13.4 | 12.2 | 11.2 | 3.73 | 0.59 | | | |
| 135 | 8.63 | 4.16 | 0.67 | 8.24 | 10.06 | 7.93 | 0.89 | 5.63 | 12.2 | 1.20 | 6.00 | 11.0 | 9.71 | 8.77 | 2.78 | 1.62 | | | |
| 140 | 6.82 | 6.13 | 0.46 | 2.22 | 4.13 | 2.23 | 0.50 | 8.93 | 10.2 | 2.61 | 1.79 | 8.16 | 7.34 | 5.92 | 0.66 | 2.81 | | | |
| 145 | 5.16 | 5.37 | 0.40 | 0.49 | 0.91 | 0.50 | 0.43 | 7.70 | 8.17 | 3.31 | 0.43 | 3.52 | 3.99 | 1.69 | 0.38 | 3.15 | | | |
| 150 | 2.76 | 0.31 | 0.35 | 0.41 | 0.54 | 0.43 | 0.36 | 1.71 | 6.13 | 0.74 | 0.39 | 0.52 | 0.90 | 0.51 | 0.38 | 0.34 | | | |
| 155 | 0.30 | 0.32 | 0.33 | 0.47 | 0.38 | 0.57 | 0.34 | 0.35 | 0.39 | 0.36 | 0.39 | 0.47 | 0.40 | 0.47 | 0.38 | 0.32 | | | |
| 160 | 1.36 | 0.33 | 1.86 | 0.31 | 0.34 | 0.41 | 1.99 | 0.39 | 0.69 | 0.36 | 0.50 | 0.38 | 0.38 | 0.38 | 0.49 | 0.32 | | | |
| 165 | 0.69 | 0.33 | 1.05 | 0.31 | 1.11 | 0.43 | 1.46 | 0.48 | 1.27 | 0.39 | 1.44 | 0.37 | 1.19 | 0.36 | 0.67 | 0.32 | | | |
| 170 | 0.35 | 0.33 | 0.32 | 0.32 | 0.34 | 0.32 | 0.33 | 0.33 | 0.35 | 0.35 | 0.34 | 0.35 | 0.34 | 0.34 | 0.34 | 0.32 | | | |
| 175 | 0.33 | 0.34 | 0.32 | 0.33 | 0.32 | 0.32 | 0.33 | 0.33 | 0.35 | 0.35 | 0.34 | 0.35 | 0.34 | 0.34 | 0.34 | 0.32 | | | |
| 180 | 0.33 | 0.34 | 0.32 | 0.33 | 0.32 | 0.32 | 0.33 | 0.33 | 0.35 | 0.34 | 0.34 | 0.34 | 0.34 | 0.34 | 0.34 | 0.32 | | | |

C Range: 0 - 360DEG
 C Interval: 22.5DEG
 Test Speed: HIGH
 Temperature:25.3°C
 Operators:DAMIN
 Test Date:2024-01-12

γ Range: 0 - 180DEG
 γ Interval: 5.0DEG
 Test System:EVERFINE GO-2000B_V1 SYSTEM V2.00.473
 Humidity:65.0%
 Test Distance:9.401m [K=1.0000]
 Remarks: