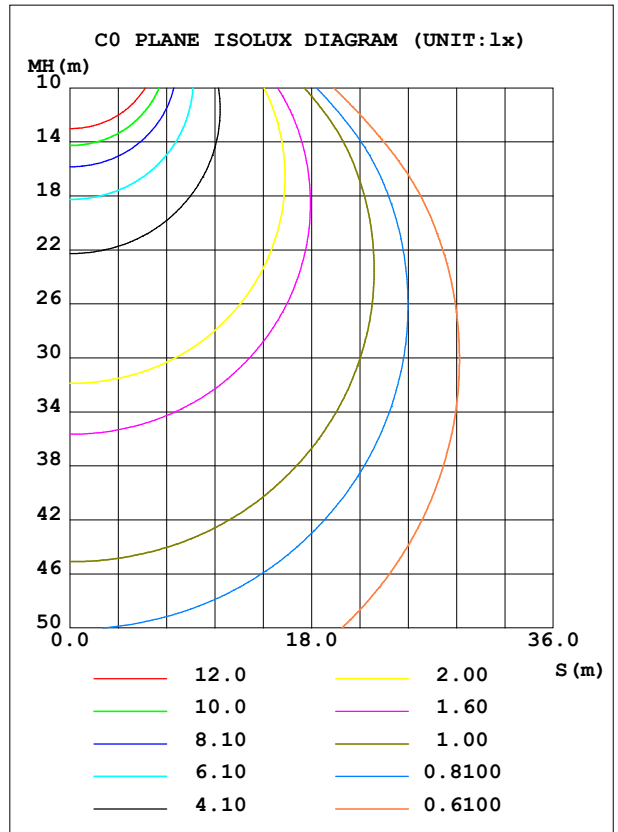
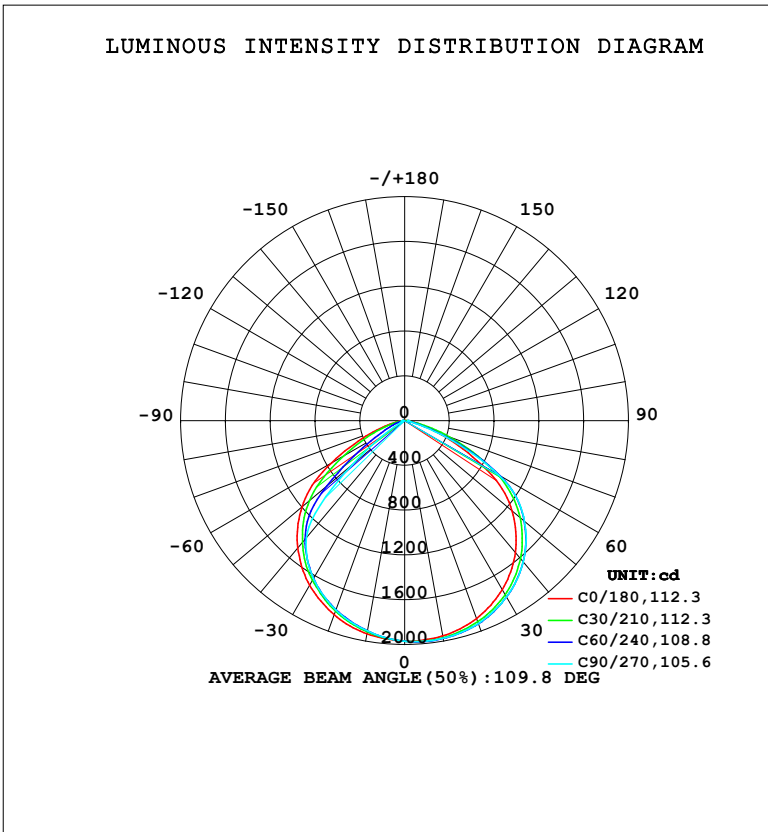


LUMINAIRE PHOTOMETRIC TEST REPORT

Test:U:220.38V I:0.2110A P:46.214W PF:0.9939 Freq:50.00Hz Lamp Flux:5036.73x1 lm		
NAME:	TYPE:	WEIGHT:
SPEC.:	DIM.:	SERIAL No.:
MFR.: EVERFINE	SUR.:	Shielding Angle:

DATA OF LAMP		PHOTOMETRIC DATA			
MODEL	409	Imax (cd)	1982	S/MH (C0/180)	1.28
NOMINAL POWER (W)	50	LOR (%)	100.0	S/MH (C90/270)	1.24
RATED VOLTAGE (V)	220	TOTAL FLUX (lm)	5036.7	η UP, DN (C0-180)	0.0,56.4
NOMINAL FLUX (lm)	5036.73	CIE CLASS	DIRECT	η UP, DN (C180-360)	0.0,43.6
LAMPS INSIDE	1	η up (%)	0.0	CIBSE SHR NOM	1.25
TEST VOLTAGE (V)	219.5	η down (%)	100.0	CIBSE SHR MAX	1.35



C Range: 0 - 360DEG
 C Interval: 15.0DEG
 Test Speed: HIGH
 Temperature: 25.3°C
 Operators: DAMIN
 Test Date: 2024-01-19

γ Range: 0 - 90DEG
 γ Interval: 1.0DEG
 Test System: EVERFINE GO-2000B_V1 SYSTEM V2.00.473
 Humidity: 65.0%
 Test Distance: 9.401m [K=1.0000]
 Remarks:

ZONAL FLUX DIAGRAM

ZONAL FLUX DIAGRAM:

γ	C0	C45	C90	C135	C180	C225	C270	C315	γ	Φ zone	Φ total	%lum, lamp
10	1952	1974	1974	1956	1935	1909	1908	1924	0- 10	186.7	186.7	3.71,3.71
20	1880	1924	1928	1893	1845	1799	1800	1825	10- 20	539.2	725.8	14.4,14.4
30	1744	1815	1818	1775	1698	1629	1629	1667	20- 30	829.5	1555	30.9,30.9
40	1539	1637	1646	1592	1485	1401	1367	1437	30- 40	1017	2573	51.1,51.1
50	1253	1381	1398	1331	1197	1053	614.9	1024	40- 50	1042	3615	71.8,71.8
60	802.4	998.4	971.6	934.9	752.1	513.9	66.13	326.7	50- 60	818.1	4433	88,88
70	315.9	407.1	294.5	378.7	300.7	185.6	29.09	90.09	60- 70	441.4	4874	96.8,96.8
80	71.52	48.78	51.55	44.74	66.19	20.32	22.03	19.48	70- 80	135.3	5010	99.5,99.5
90	3.805	21.28	27.23	22.27	5.847	12.22	19.40	14.50	80- 90	26.97	5037	100,100
100									90-100			
110									100-110			
120									110-120			
130									120-130			
140									130-140			
150									140-150			
160									150-160			
170									160-170			
180									170-180			
DEG	LUMINOUS INTENSITY:cd									UNIT:lm		

Conical surface Flux(90deg): 3106.2 lm

%lum = 61.7%

%lamp = 61.7%

Conical surface Flux(130deg): 4701.5 lm

%lum = 93.3%

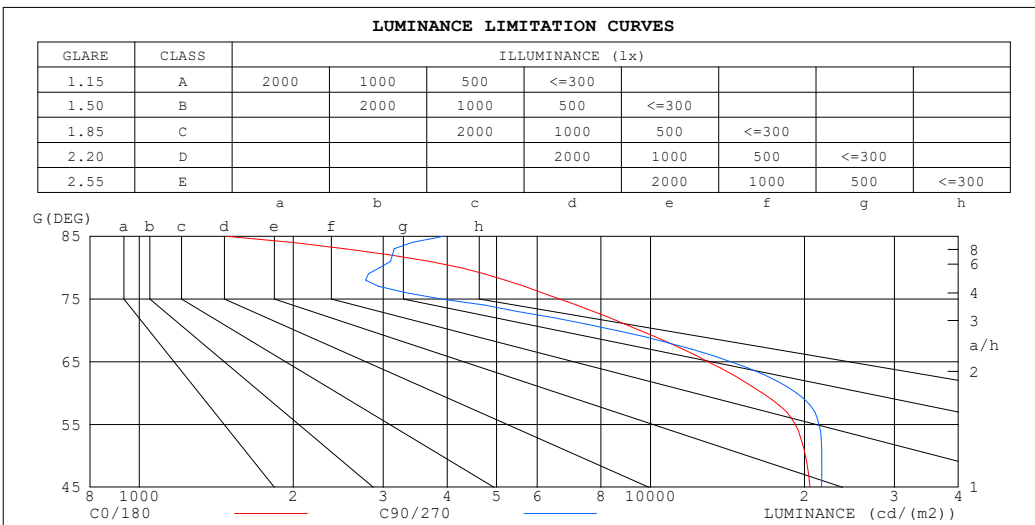
%lamp = 93.3%

C Range: 0 - 360DEG
 C Interval: 15.0DEG
 Test Speed: HIGH
 Temperature:25.3°C
 Operators:DAMIN
 Test Date:2024-01-19

γ Range: 0 - 90DEG
 γ Interval: 1.0DEG
 Test System:EVERFINE GO-2000B_V1 SYSTEM V2.00.473
 Humidity:65.0%
 Test Distance:9.401m [K=1.0000]
 Remarks:

LUMINANCE LIMITATION CURVES

Test:U:220.38V I:0.2110A P:46.214W PF:0.9939 Freq:50.00Hz Lamp Flux:5036.73x1 lm		
NAME:	TYPE:	WEIGHT:
SPEC.:	DIM.:	SERIAL No.:
MFR.: EVERFINE	SUR.:	Shielding Angle:



LUMINANCE cd/(m2)		
G (DEG)	C0/180	C90/270
85	1482	3934
80	4250	2953
75	6639	3898
70	9529	8566
65	12971	14352
60	16558	19329
55	19195	21359
50	20106	21629
45	20512	21593

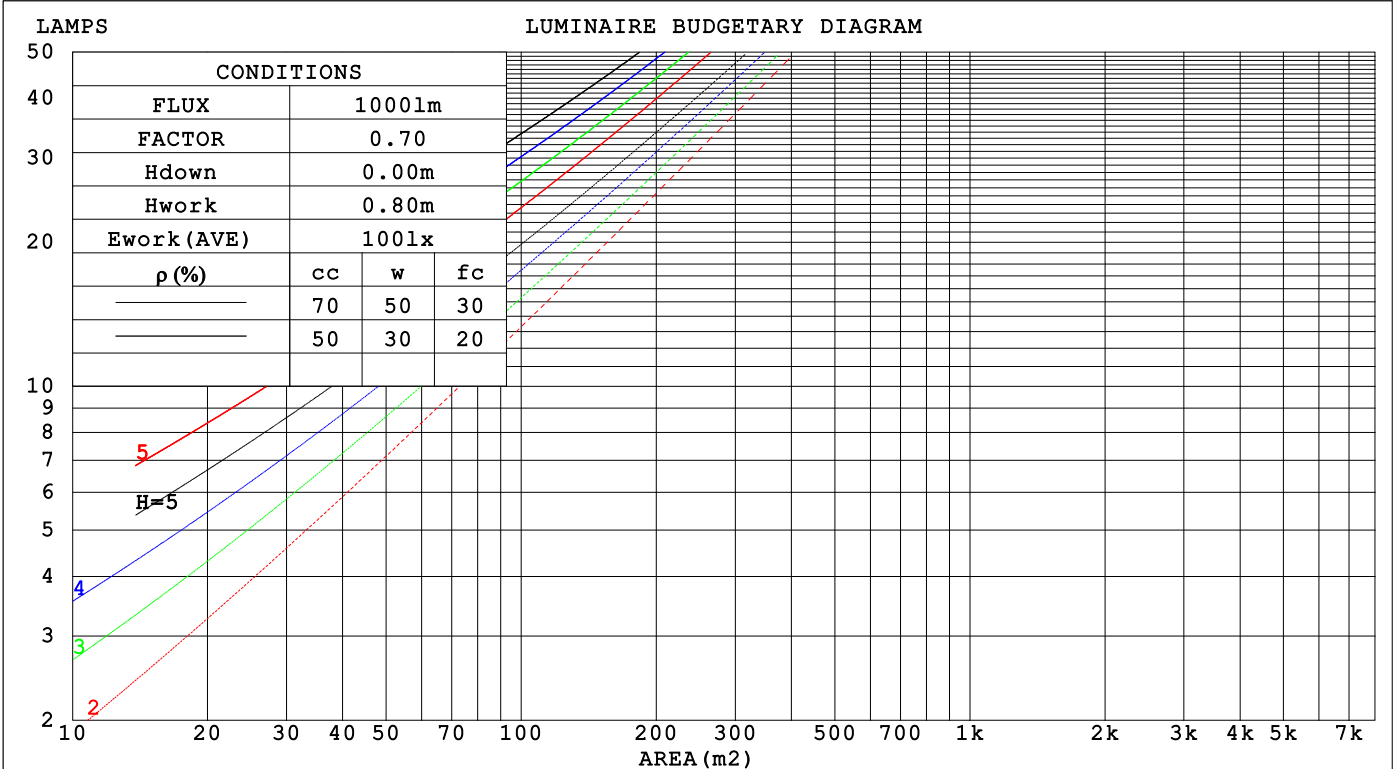
C Range: 0 - 360DEG
 C Interval: 15.0DEG
 Test Speed: HIGH
 Temperature:25.3°C
 Operators:DAMIN
 Test Date:2024-01-19

γ Range: 0 - 90DEG
 γ Interval: 1.0DEG
 Test System:EVERFINE GO-2000B_V1 SYSTEM V2.00.473
 Humidity:65.0%
 Test Distance:9.401m [K=1.0000]
 Remarks:

CU AND LUMINAIRE BUDGETARY ESTIMATE DIAGRAM

Test:U:220.38V I:0.2110A P:46.214W PF:0.9939 Freq:50.00Hz Lamp Flux:5036.73x1 lm		
NAME:	TYPE:	WEIGHT:
SPEC.:	DIM.:	SERIAL No.:
MFR.: EVERFINE	SUR.:	Shielding Angle:

ρcc	80%			70%			50%			30%			10%			0
	ρw	50%	30%	10%	50%	30%	10%	50%	30%	10%	50%	30%	10%	50%	30%	10%
ρfc	20%			20%			20%			20%			20%			0
RCR	RCR:Room Cavity Ratio															
	Coefficients of Utilization(CU)															
0.0	1.19	1.19	1.19	1.16	1.16	1.16	1.11	1.11	1.11	1.06	1.06	1.06	1.02	1.02	1.02	1.00
1.0	1.06	1.03	.99	1.04	1.01	.98	.00	.97	.95	.96	.94	.92	.92	.91	.89	.87
2.0	.94	.88	.83	.92	.87	.82	.89	.84	.80	.85	.82	.78	.83	.79	.76	.74
3.0	.83	.76	.70	.82	.75	.69	.79	.73	.68	.76	.71	.67	.74	.70	.66	.64
4.0	.74	.66	.60	.73	.65	.60	.71	.64	.59	.68	.63	.58	.66	.61	.57	.55
5.0	.67	.58	.52	.66	.58	.52	.64	.57	.51	.62	.55	.51	.60	.54	.50	.48
6.0	.60	.52	.46	.59	.51	.45	.58	.50	.45	.56	.50	.45	.54	.49	.44	.42
7.0	.55	.46	.40	.54	.46	.40	.52	.45	.40	.51	.45	.40	.50	.44	.39	.38
8.0	.50	.42	.36	.49	.41	.36	.48	.41	.36	.47	.40	.36	.46	.40	.35	.34
9.0	.46	.38	.33	.45	.38	.32	.44	.37	.32	.43	.37	.32	.42	.36	.32	.30
10.0	.42	.35	.29	.42	.34	.29	.41	.34	.29	.40	.34	.29	.39	.33	.29	.27



C Range: 0 - 360DEG
 C Interval: 15.0DEG
 Test Speed: HIGH
 Temperature:25.3°C
 Operators:DAMIN
 Test Date:2024-01-19

γ Range: 0 - 90DEG
 γ Interval: 1.0DEG
 Test System:EVERFINE GO-2000B_V1 SYSTEM V2.00.473
 Humidity:65.0%
 Test Distance:9.401m [K=1.0000]
 Remarks:

WEC AND CCEC

Test:U:220.38V I:0.2110A P:46.214W PF:0.9939 Freq:50.00Hz		
Lamp Flux:5036.73x1 lm		
NAME:	TYPE:	WEIGHT:
SPEC.:	DIM.:	SERIAL No.:
MFR.: EVERFINE	SUR.:	Shielding Angle:

ρ_{CC}	80%			70%			50%			30%			10%			0
ρ_w	50%	30%	10%	50%	30%	10%	50%	30%	10%	50%	30%	10%	50%	30%	10%	0
ρ_{fc}	20%			20%			20%			20%			20%			0
RCR	RCR:Room Cavity Ratio						Wall Exitance Coefficients (WEC)									
0.0																
1.0	.265	.151	.048	.258	.147	.047	.245	.140	.045	.233	.134	.043	.222	.129	.041	
2.0	.258	.141	.043	.252	.139	.043	.240	.134	.041	.230	.129	.040	.220	.124	.039	
3.0	.244	.130	.039	.239	.128	.038	.229	.124	.038	.220	.120	.037	.211	.117	.036	
4.0	.229	.119	.035	.225	.118	.035	.216	.114	.034	.208	.111	.034	.200	.109	.033	
5.0	.215	.110	.032	.211	.108	.032	.203	.106	.031	.196	.103	.031	.189	.101	.030	
6.0	.202	.101	.029	.198	.100	.029	.191	.098	.028	.184	.096	.028	.178	.094	.028	
7.0	.189	.094	.027	.186	.093	.026	.180	.091	.026	.174	.089	.026	.168	.087	.026	
8.0	.178	.087	.024	.175	.086	.024	.169	.085	.024	.164	.083	.024	.159	.082	.024	
9.0	.168	.081	.023	.165	.080	.023	.160	.079	.022	.155	.078	.022	.151	.076	.022	
10.0	.158	.076	.021	.156	.075	.021	.151	.074	.021	.147	.073	.021	.143	.072	.021	

ρ_{CC}	80%			70%			50%			30%			10%			0
ρ_w	50%	30%	10%	50%	30%	10%	50%	30%	10%	50%	30%	10%	50%	30%	10%	0
ρ_{fc}	20%			20%			20%			20%			20%			0
RCR	RCR:Room Cavity Ratio						Ceiling Cavity Exitance Coefficients (CCEC)									
0.0	.190	.190	.190	.163	.163	.163	.111	.111	.111	.064	.064	.064	.020	.020	.020	
1.0	.177	.157	.138	.152	.134	.119	.104	.092	.082	.060	.053	.048	.019	.017	.015	
2.0	.168	.132	.102	.144	.114	.088	.098	.079	.062	.057	.046	.036	.018	.015	.012	
3.0	.160	.114	.078	.137	.098	.068	.094	.068	.047	.054	.040	.028	.017	.013	.009	
4.0	.152	.101	.061	.130	.087	.053	.090	.061	.037	.052	.035	.022	.017	.012	.007	
5.0	.145	.090	.049	.124	.078	.043	.086	.054	.030	.050	.032	.018	.016	.010	.006	
6.0	.138	.082	.041	.119	.071	.036	.082	.049	.025	.048	.029	.015	.015	.010	.005	
7.0	.132	.075	.035	.113	.065	.030	.078	.045	.021	.045	.027	.013	.015	.009	.004	
8.0	.126	.069	.030	.108	.060	.026	.075	.042	.018	.044	.025	.011	.014	.008	.004	
9.0	.120	.064	.026	.103	.055	.023	.072	.039	.016	.042	.023	.010	.014	.008	.003	
10.0	.115	.060	.023	.099	.052	.020	.069	.036	.014	.040	.022	.009	.013	.007	.003	

C Range: 0 - 360DEG
 C Interval: 15.0DEG
 Test Speed: HIGH
 Temperature:25.3°C
 Operators:DAMIN
 Test Date:2024-01-19

γ Range: 0 - 90DEG
 γ Interval: 1.0DEG
 Test System:EVERFINE GO-2000B_V1 SYSTEM V2.00.473
 Humidity:65.0%
 Test Distance:9.401m [K=1.0000]
 Remarks:

UGR(Unified Glare Rating) Table

Test:U:220.38V I:0.2110A P:46.214W PF:0.9939 Freq:50.00Hz										
Lamp Flux:5036.73x1 lm										
NAME:			TYPE:			WEIGHT:				
SPEC.:			DIM.:			SERIAL No.:				
MFR.: EVERFINE			SUR.:			Shielding Angle:				
ceiling/cavity	0.7	0.7	0.5	0.5	0.3	0.7	0.7	0.5	0.5	0.3
walls	0.5	0.3	0.5	0.3	0.3	0.5	0.3	0.5	0.3	0.3
working plane	0.2	0.2	0.2	0.2	0.2	0.2	0.2	0.2	0.2	0.2
Room dimensions	Viewed crosswise					Viewed endwise				
x = 2H y = 2H	18.3	19.7	18.5	19.9	20.1	18.6	20.0	18.9	20.2	20.4
3H	19.0	20.3	19.3	20.5	20.8	19.1	20.4	19.4	20.7	20.9
4H	19.1	20.4	19.4	20.6	20.9	19.1	20.3	19.4	20.6	20.8
6H	19.1	20.3	19.5	20.6	20.8	19.0	20.2	19.4	20.4	20.7
8H	19.1	20.2	19.4	20.5	20.8	19.0	20.1	19.3	20.4	20.7
12H	19.1	20.1	19.4	20.4	20.7	19.0	20.0	19.3	20.3	20.6
4H 2H	18.8	20.0	19.1	20.3	20.5	19.1	20.3	19.4	20.5	20.8
3H	19.7	20.7	20.0	21.0	21.3	19.6	20.7	20.0	21.0	21.3
4H	19.9	20.9	20.3	21.2	21.5	19.6	20.6	20.0	20.9	21.3
6H	19.9	20.8	20.3	21.1	21.5	19.6	20.4	20.0	20.8	21.2
8H	19.9	20.7	20.3	21.1	21.5	19.6	20.4	20.0	20.7	21.1
12H	19.9	20.6	20.3	21.0	21.4	19.6	20.3	20.0	20.7	21.1
8H 4H	19.9	20.7	20.3	21.0	21.4	19.6	20.4	20.1	20.8	21.2
6H	20.0	20.6	20.4	21.0	21.4	19.6	20.3	20.1	20.7	21.1
8H	20.0	20.5	20.4	21.0	21.4	19.6	20.2	20.1	20.6	21.0
12H	19.9	20.4	20.4	20.9	21.3	19.6	20.1	20.1	20.5	21.0
12H 4H	19.8	20.6	20.3	20.9	21.3	19.6	20.3	20.0	20.7	21.1
6H	19.9	20.5	20.4	20.9	21.4	19.6	20.2	20.0	20.6	21.0
8H	19.9	20.4	20.4	20.9	21.3	19.6	20.1	20.1	20.5	21.0
Variations with the observer position at spacings(CIE Pub.117):										
S = 1.0H	+ 0.3 / - 0.4					+ 0.3 / - 0.4				
1.5H	+ 0.5 / - 0.8					+ 0.6 / - 0.9				
2.0H	+ 0.4 / - 1.0					+ 0.6 / - 0.8				

CIE Pub.117, 5037 lm Total Lamp Luminous Flux Correct (8log(F/F0) = 5.6)
 Area: 0.1 m2

C Range: 0 - 360DEG
 C Interval: 15.0DEG
 Test Speed: HIGH
 Temperature:25.3°C
 Operators:DAMIN
 Test Date:2024-01-19

γ Range: 0 - 90DEG
 γ Interval: 1.0DEG
 Test System:EVERFINE GO-2000B_V1 SYSTEM V2.00.473
 Humidity:65.0%
 Test Distance:9.401m [K=1.0000]
 Remarks:

UTILIZATION FACTORS TABLE

Test:U:220.38V I:0.2110A P:46.214W PF:0.9939 Freq:50.00Hz Lamp Flux:5036.73x1 lm		
NAME:	TYPE:	WEIGHT:
SPEC.:	DIM.:	SERIAL No.:
MFR.: EVERFINE	SUR.:	Shielding Angle:

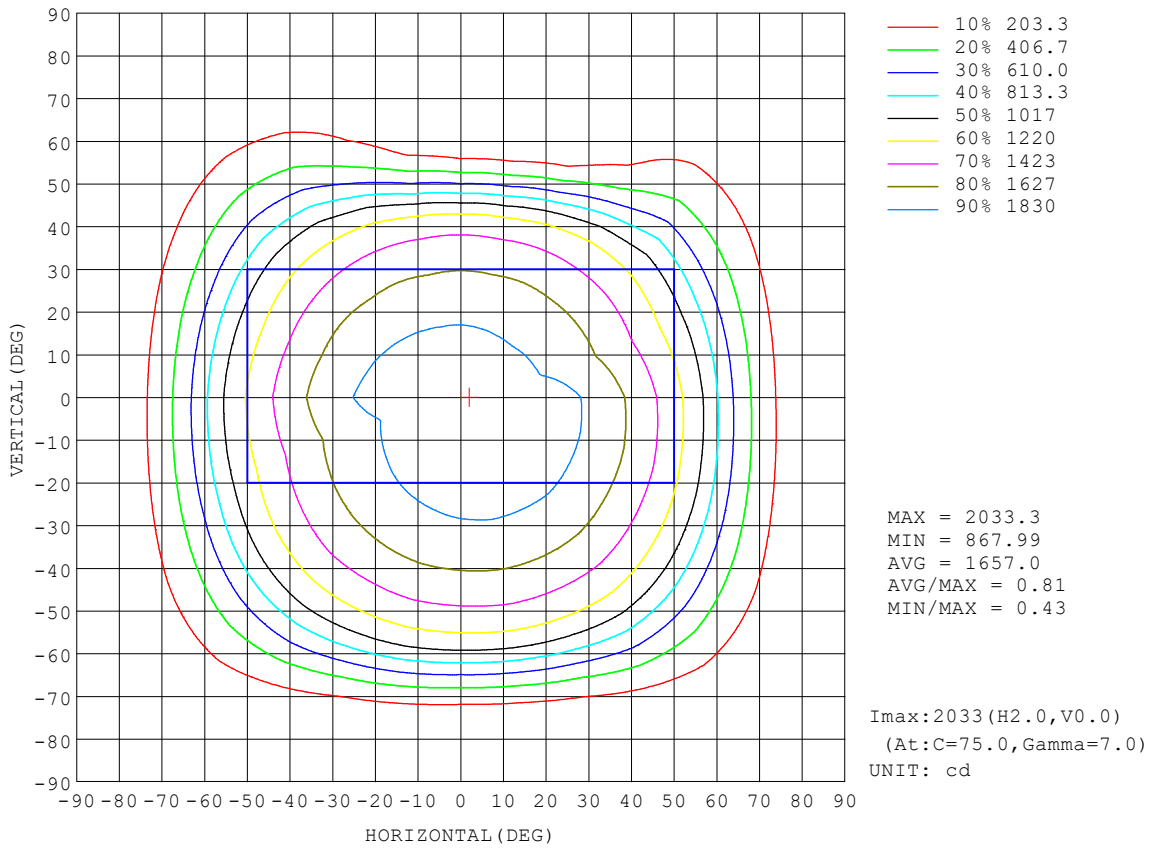
REFLECTANCE										
Ceiling	0.8	0.8	0.8	0.7	0.7	0.7	0.5	0.5	0.5	0
Walls	0.7	0.5	0.3	0.7	0.5	0.3	0.7	0.5	0.3	0
Working plane	0.2	0.2	0.2	0.2	0.2	0.2	0.2	0.2	0.2	0
ROOM INDEX	UTILIZATION FACTORS (PERCENT) $k(RI) \times RCR = 5$									
k = 0.60	61	50	43	60	49	43	59	49	43	36
0.80	71	60	54	70	60	53	69	59	53	46
1.00	80	70	63	79	69	63	77	71	62	56
1.25	87	78	71	86	77	71	83	76	70	64
1.50	92	83	77	90	82	77	88	81	76	69
2.00	98	91	85	97	90	85	93	88	83	76
2.50	102	95	90	100	94	89	96	91	87	79
3.00	105	99	94	103	97	93	99	95	91	83
4.00	108	103	99	106	102	98	102	98	95	87
5.00	110	106	103	108	104	101	104	101	98	89
ROOM INDEX	UF(total)									Direct
According to DIN EN 13032-2 2004			Suspended				SHRNOM = 1.25			

C Range: 0 - 360DEG
 C Interval: 15.0DEG
 Test Speed: HIGH
 Temperature:25.3°C
 Operators:DAMIN
 Test Date:2024-01-19

γ Range: 0 - 90DEG
 γ Interval: 1.0DEG
 Test System:EVERFINE GO-2000B_V1 SYSTEM V2.00.473
 Humidity:65.0%
 Test Distance:9.401m [K=1.0000]
 Remarks:

ISOCANDELA DIAGRAM

Test:U:220.38V I:0.2110A P:46.214W PF:0.9939 Freq:50.00Hz Lamp Flux:5036.73x1 lm		
NAME:	TYPE:	WEIGHT:
SPEC.:	DIM.:	SERIAL No.:
MFR.: EVERFINE	SUR.:	Shielding Angle:

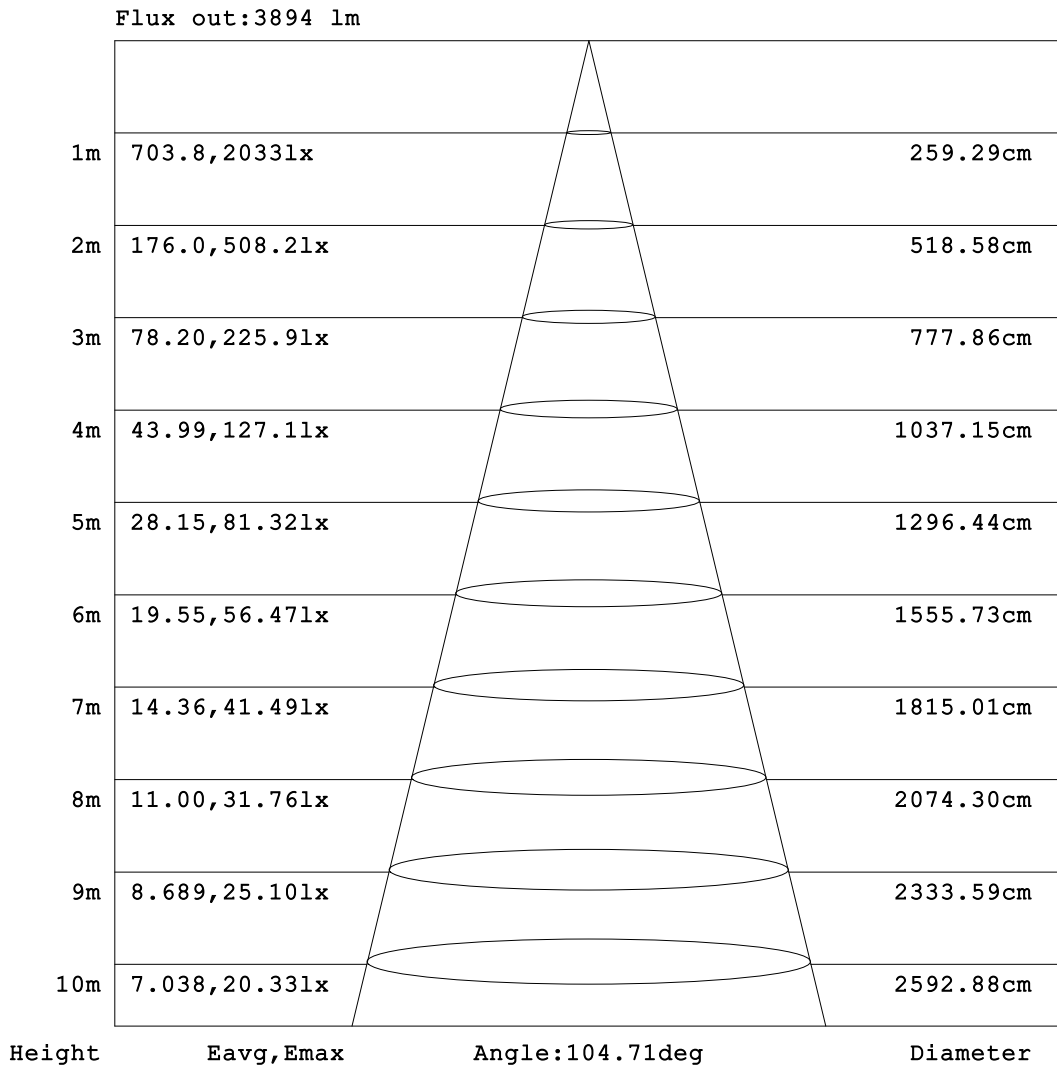


C Range: 0 - 360DEG
 C Interval: 15.0DEG
 Test Speed: HIGH
 Temperature:25.3°C
 Operators:DAMIN
 Test Date:2024-01-19

γ Range: 0 - 90DEG
 γ Interval: 1.0DEG
 Test System:EVERFINE GO-2000B_V1 SYSTEM V2.00.473
 Humidity:65.0%
 Test Distance:9.401m [K=1.0000]
 Remarks:

AAI Figure

Test:U:220.38V I:0.2110A P:46.214W PF:0.9939 Freq:50.00Hz Lamp Flux:5036.73x1 lm		
NAME:	TYPE:	WEIGHT:
SPEC.:	DIM.:	SERIAL No.:
MFR.: EVERFINE	SUR.:	Shielding Angle:



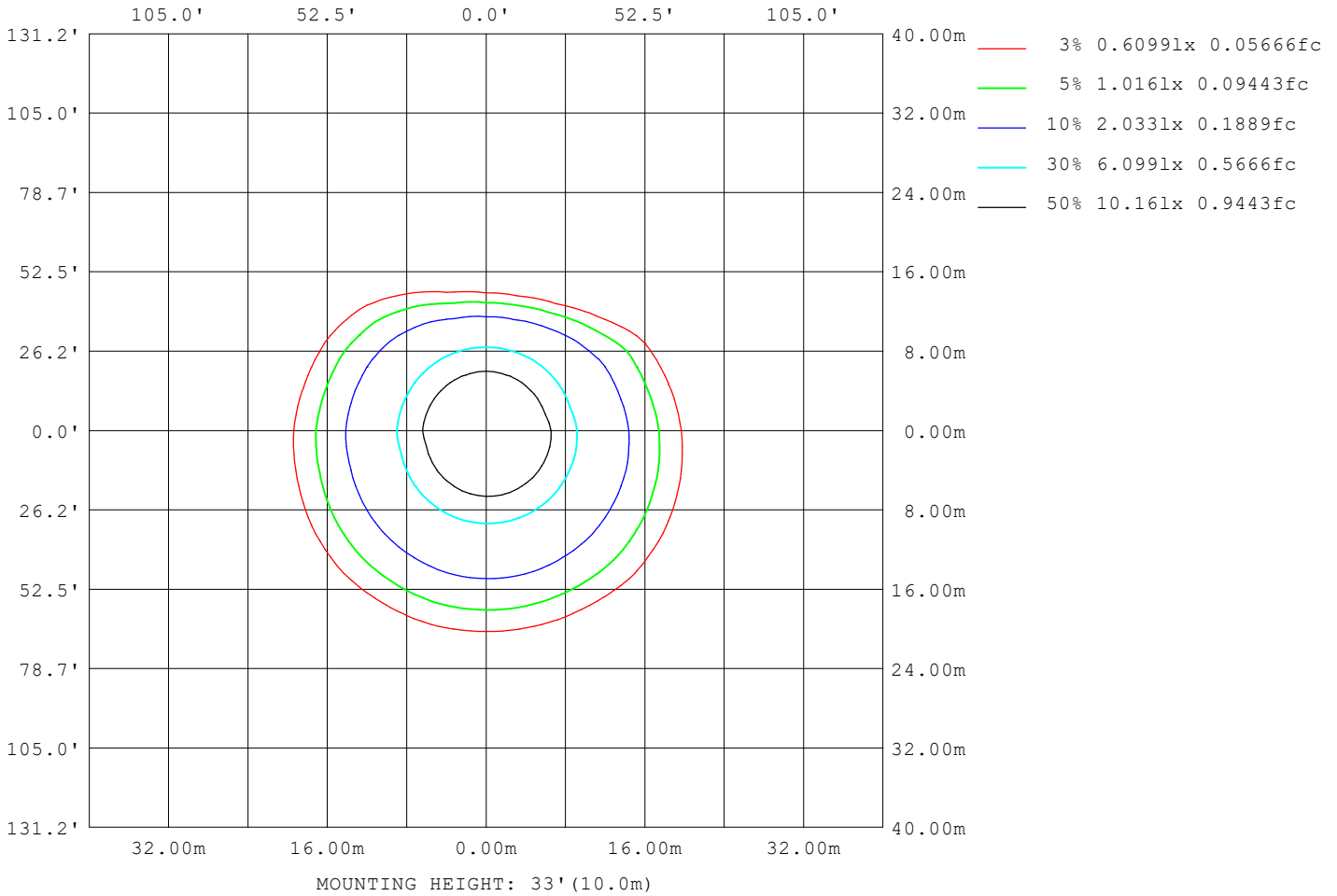
Note: The Curves indicate the illuminated area and the average illumination when the luminaire is at different distance.

C Range: 0 - 360DEG
 C Interval: 15.0DEG
 Test Speed: HIGH
 Temperature: 25.3°C
 Operators: DAMIN
 Test Date: 2024-01-19

γ Range: 0 - 90DEG
 γ Interval: 1.0DEG
 Test System: EVERFINE GO-2000B_V1 SYSTEM V2.00.473
 Humidity: 65.0%
 Test Distance: 9.401m [K=1.0000]
 Remarks:

ISOLUX DIAGRAM

Test:U:220.38V I:0.2110A P:46.214W PF:0.9939 Freq:50.00Hz Lamp Flux:5036.73x1 lm		
NAME:	TYPE:	WEIGHT:
SPEC.:	DIM.:	SERIAL No.:
MFR.: EVERFINE	SUR.:	Shielding Angle:



C Range: 0 - 360DEG
 C Interval: 15.0DEG
 Test Speed: HIGH
 Temperature:25.3°C
 Operators:DAMIN
 Test Date:2024-01-19

γ Range: 0 - 90DEG
 γ Interval: 1.0DEG
 Test System:EVERFINE GO-2000B_V1 SYSTEM V2.00.473
 Humidity:65.0%
 Test Distance:9.401m [K=1.0000]
 Remarks:

LED Avg.L Report

Test:U:220.38V I:0.2110A P:46.214W PF:0.9939 Freq:50.00Hz Lamp Flux:5036.73x1 lm		
NAME:	TYPE:	WEIGHT:
SPEC.:	DIM.:	SERIAL No.:
MFR.: EVERFINE	SUR.:	Shielding Angle:

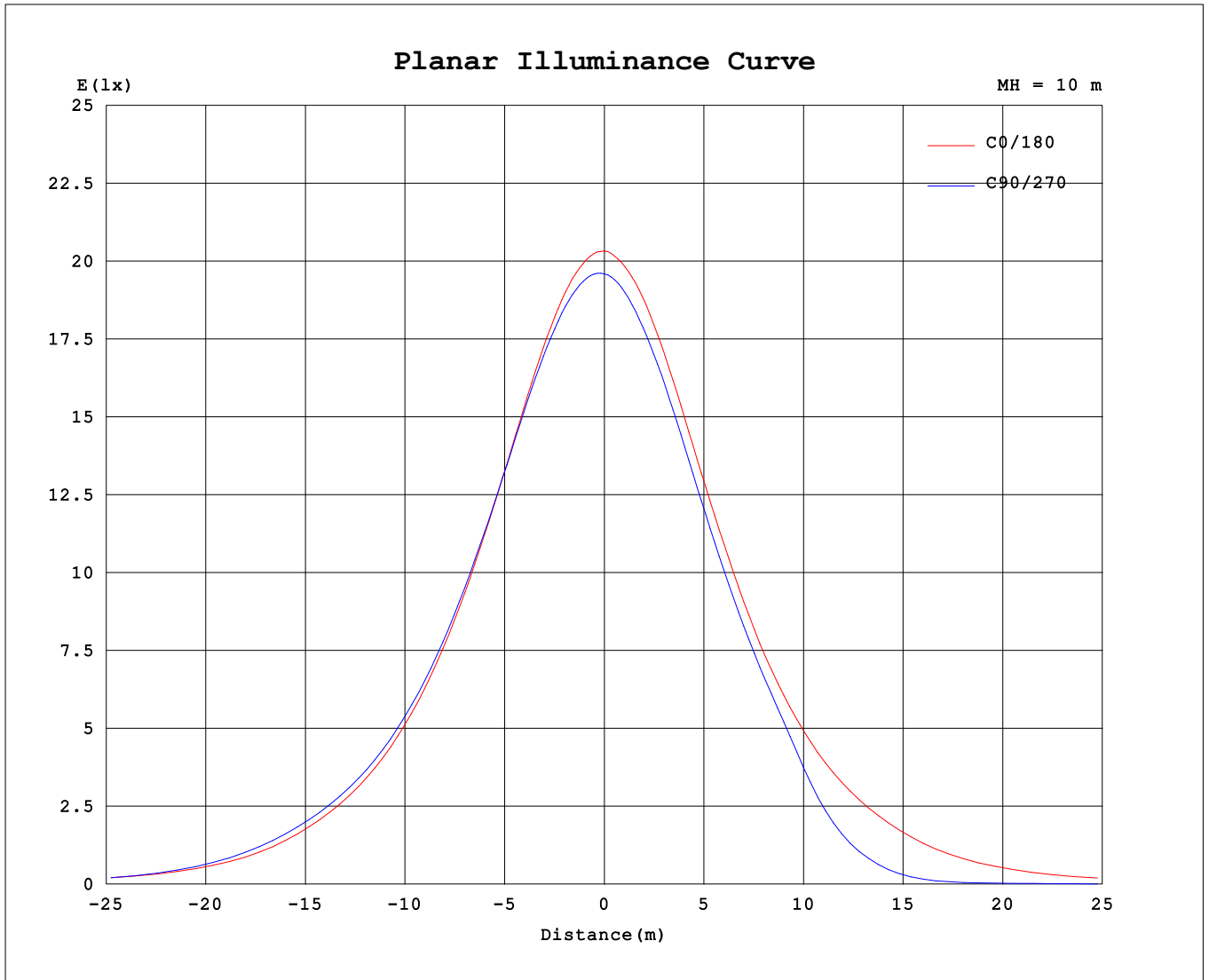
AvgL	cd/m2
L_0~180 (65) av	12212
L_0~180 (75) av	6295
L_0~180 (85) av	1501
L_90~270 (65) av	7646
L_90~270 (75) av	2473
L_90~270 (85) av	3188
L_45 (65) av	10839
L_45 (75) av	4464
L_45 (85) av	2843

Standard: GB/T 29293-2012

C Range: 0 - 360DEG
 C Interval: 15.0DEG
 Test Speed: HIGH
 Temperature:25.3°C
 Operators:DAMIN
 Test Date:2024-01-19

γ Range: 0 - 90DEG
 γ Interval: 1.0DEG
 Test System:EVERFINE GO-2000B_V1 SYSTEM V2.00.473
 Humidity:65.0%
 Test Distance:9.401m [K=1.0000]
 Remarks:

Planar Illuminance Curve



C Range: 0 - 360DEG
 C Interval: 15.0DEG
 Test Speed: HIGH
 Temperature: 25.3°C
 Operators: DAMIN
 Test Date: 2024-01-19

γ Range: 0 - 90DEG
 γ Interval: 1.0DEG
 Test System: EVERFINE GO-2000B_V1 SYSTEM V2.00.473
 Humidity: 65.0%
 Test Distance: 9.401m [K=1.0000]
 Remarks:

LUMINOUS DISTRIBUTION INTENSITY DATA

Test:U:220.38V I:0.2110A P:46.214W PF:0.9939 Freq:50.00Hz Lamp Flux:5036.73x1 lm		
NAME:	TYPE:	WEIGHT:
SPEC.:	DIM.:	SERIAL No.:
MFR.: EVERFINE	SUR.:	Shielding Angle:

Table--1

UNIT: cd

C (DEG) γ (DEG)	0	15	30	45	60	75	90	105	120	135	150	165	180	195	210	225	240	255	270
0	1970	1970	1970	1970	1970	1970	1970	1970	1970	1970	1970	1970	1970	1970	1970	1970	1970	1970	1970
5	1967	1973	1976	1980	1981	1981	1978	1976	1971	1969	1965	1961	1956	1953	1950	1947	1947	1945	1947
10	1952	1963	1968	1974	1976	1978	1974	1970	1963	1956	1950	1944	1935	1925	1918	1909	1907	1904	1908
15	1924	1937	1946	1956	1959	1961	1958	1952	1942	1933	1923	1912	1897	1882	1871	1859	1856	1855	1862
20	1880	1899	1910	1924	1930	1931	1928	1922	1907	1893	1878	1863	1845	1827	1810	1799	1796	1792	1800
25	1819	1846	1860	1878	1882	1886	1879	1870	1858	1843	1819	1799	1777	1750	1733	1723	1722	1714	1721
30	1744	1775	1795	1815	1819	1825	1818	1811	1793	1775	1747	1724	1698	1665	1647	1629	1629	1619	1629
35	1650	1689	1711	1732	1741	1749	1743	1732	1708	1690	1663	1633	1602	1563	1547	1526	1515	1506	1516
40	1539	1585	1610	1637	1647	1654	1646	1638	1616	1592	1560	1523	1485	1443	1420	1401	1383	1367	1367
45	1406	1458	1486	1521	1533	1541	1535	1524	1497	1478	1433	1396	1352	1303	1279	1246	1211	1114	1064
50	1253	1307	1347	1381	1394	1407	1398	1389	1359	1331	1293	1247	1197	1143	1109	1053	909	696	615
55	1067	1132	1175	1217	1229	1242	1232	1224	1192	1164	1120	1074	1009	942	886	775	556	335	251
60	802	893	955	998	985	983	972	975	949	935	886	827	752	679	627	514	308	131	66.1
65	531	612	676	700	644	622	610	628	630	651	621	567	501	445	408	324	175	72.3	36.5
70	316	381	428	407	328	302	295	313	326	379	395	357	301	261	240	186	99.3	45.7	29.1
75	167	210	219	169	119	104	101	109	118	160	203	198	159	133	122	84.9	44.4	29.5	26.6
80	71.5	87.5	68.1	48.8	41.2	46.3	51.6	49.8	42.1	44.7	66.8	85.9	66.2	51.2	38.3	20.3	20.3	21.2	22.0
85	12.5	18.8	21.1	38.3	31.5	34.7	34.5	34.0	31.7	29.8	25.7	19.3	13.7	7.93	10.0	14.4	18.6	20.3	21.1
90	3.80	9.15	17.5	21.3	28.9	28.2	27.2	26.5	26.4	22.3	18.8	13.6	5.85	5.92	9.21	12.2	15.7	18.2	19.4

C Range: 0 - 360DEG γ Range: 0 - 90DEG
 C Interval: 15.0DEG γ Interval: 1.0DEG
 Test Speed: HIGH Test System:EVERFINE GO-2000B_V1 SYSTEM V2.00.473
 Temperature:25.3°C Humidity:65.0%
 Operators:DAMIN Test Distance:9.401m [K=1.0000]
 Test Date:2024-01-19 Remarks:

LUMINOUS DISTRIBUTION INTENSITY DATA

Test:U:220.38V I:0.2110A P:46.214W PF:0.9939 Freq:50.00Hz		
Lamp Flux:5036.73x1 lm		
NAME:	TYPE:	WEIGHT:
SPEC.:	DIM.:	SERIAL No.:
MFR.: EVERFINE	SUR.:	Shielding Angle:

Table--2

UNIT: cd

C (DEG) \ γ (DEG)	285	300	315	330	345														
0	1970	1970	1970	1970	1970														
5	1948	1952	1955	1958	1962														
10	1911	1916	1924	1934	1944														
15	1866	1872	1881	1896	1910														
20	1804	1814	1825	1843	1860														
25	1728	1742	1755	1777	1795														
30	1633	1654	1667	1691	1714														
35	1517	1543	1566	1592	1620														
40	1376	1408	1437	1474	1503														
45	1097	1205	1283	1332	1363														
50	647	801	1024	1157	1203														
55	271	391	638	917	1004														
60	69.5	117	327	626	725														
65	34.5	43.8	158	381	477														
70	26.8	29.9	90.1	218	280														
75	25.5	25.2	48.3	110	144														
80	21.7	20.5	19.5	35.9	57.6														
85	20.7	19.3	16.7	12.1	10.13														
90	19.1	17.4	14.5	11.1	7.18														

C Range: 0 - 360DEG
C Interval: 15.0DEG
Test Speed: HIGH
Temperature:25.3°C
Operators:DAMIN
Test Date:2024-01-19

γ Range: 0 - 90DEG
γ Interval: 1.0DEG
Test System:EVERFINE GO-2000B_V1 SYSTEM V2.00.473
Humidity:65.0%
Test Distance:9.401m [K=1.0000]
Remarks: