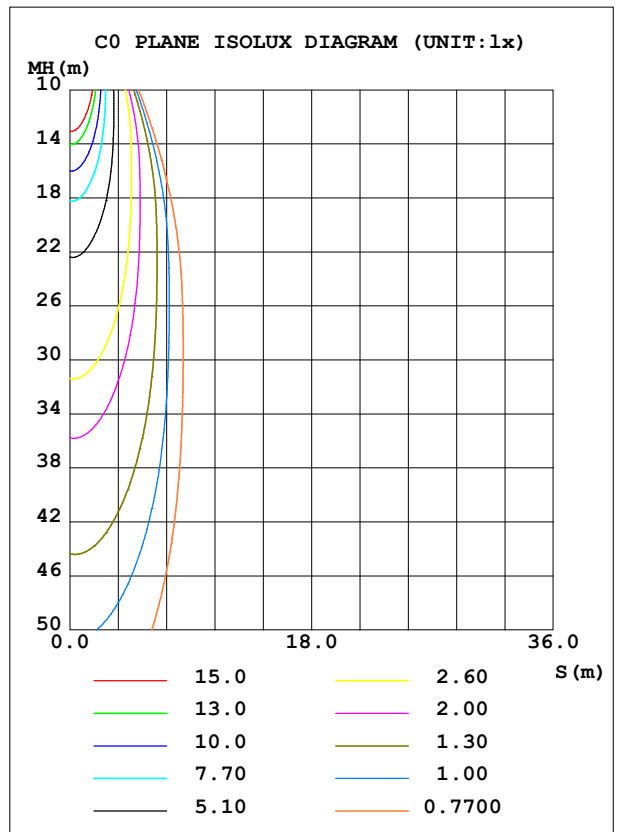
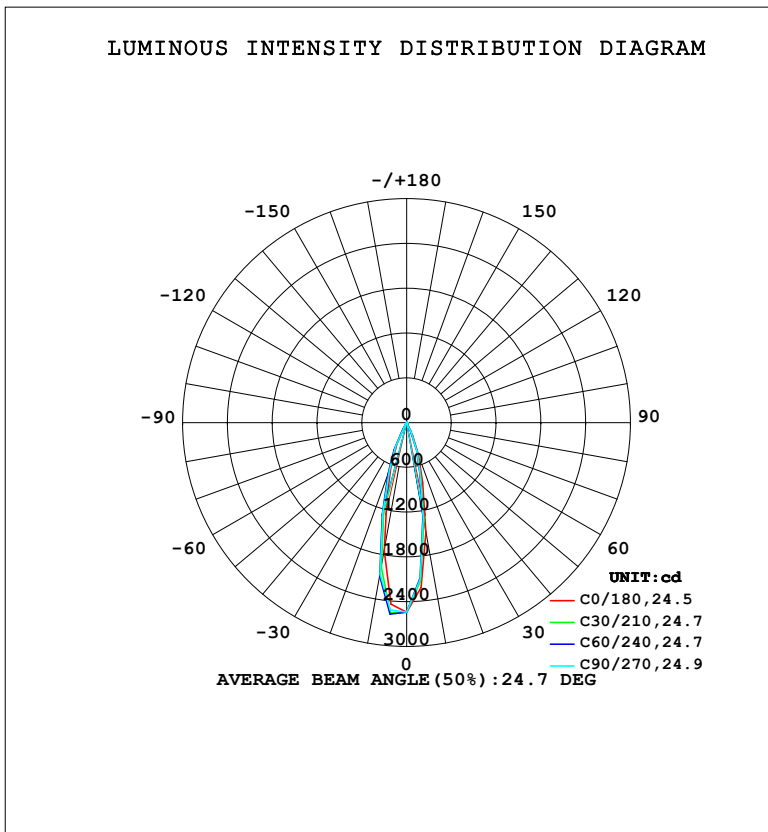


LUMINAIRE PHOTOMETRIC TEST REPORT

Test:U:220.41V I:0.0606A P:7.3236W PF:0.5483 Freq:50.00Hz Lamp Flux:615.82x1 lm		
NAME:	TYPE:	WEIGHT:
SPEC.:	DIM.:	SERIAL No.:
MFR.: EVERFINE	SUR.:	Shielding Angle:

DATA OF LAMP		PHOTOMETRIC DATA				Eff: 84.09 lm/W
MODEL	342BR	I _{max} (cd)	2576	S/MH (C0/180)	0.44	
NOMINAL POWER (W)	7	LOR (%)	100.0	S/MH (C90/270)	0.49	
RATED VOLTAGE (V)	220	TOTAL FLUX (lm)	615.82	η UP, DN (C0-180)	0.0,42.4	
NOMINAL FLUX (lm)	615.82	CIE CLASS	DIRECT	η UP, DN (C180-360)	0.0,57.6	
LAMPS INSIDE	1	η up (%)	0.0	CIBSE SHR NOM	0.00	
TEST VOLTAGE (V)	219.5	η down (%)	100.0	CIBSE SHR MAX	0.30	



C Range: 0 - 360DEG
 C Interval: 15.0DEG
 Test Speed: HIGH
 Temperature: 25.3°C
 Operators: DAMIN
 Test Date: 2024-01-22

γ Range: 0 - 90DEG
 γ Interval: 5.0DEG
 Test System: EVERFINE GO-2000B_V1 SYSTEM V2.00.473
 Humidity: 65.0%
 Test Distance: 9.401m [K=1.0000]
 Remarks:

ZONAL FLUX DIAGRAM

ZONAL FLUX DIAGRAM:

γ	C0	C45	C90	C135	C180	C225	C270	C315	γ	Φ zone	Φ total	%lum,lamp
10	1493	1310	1293	1445	1745	2034	2061	1739	0- 10	200.0	200.0	32.5,32.5
20	468.5	405.1	409.3	504.7	626.4	719.4	686.5	567.2	10- 20	277.7	477.7	77.6,77.6
30	30.43	24.52	24.86	43.17	66.17	92.09	84.72	46.15	20- 30	121.5	599.2	97.3,97.3
40	3.616	3.864	3.899	6.810	7.787	11.08	7.848	5.237	30- 40	13.36	612.6	99.5,99.5
50	0.7604	0.9940	1.022	1.456	1.568	3.015	1.692	1.261	40- 50	2.647	615.2	99.9,99.9
60	0.0361	0	0.0307	0.0362	0.1189	0.4031	0.1081	0.0549	50- 60	0.5966	615.8	100,100
70	0	0	0	0	0	0	0	0	60- 70	0.0228	615.8	100,100
80	0	0	0	0	0	0	0	0	70- 80	0	615.8	100,100
90	0	0	0	0	0	0	0	0	80- 90	0	615.8	100,100
100									90-100			
110									100-110			
120									110-120			
130									120-130			
140									130-140			
150									140-150			
160									150-160			
170									160-170			
180									170-180			
DEG	LUMINOUS INTENSITY:cd									UNIT:lm		

Conical surface Flux(90deg): 614.28 lm

%lum = 99.8%

%lamp = 99.8%

Conical surface Flux(130deg): 615.82 lm

%lum = 100.0%

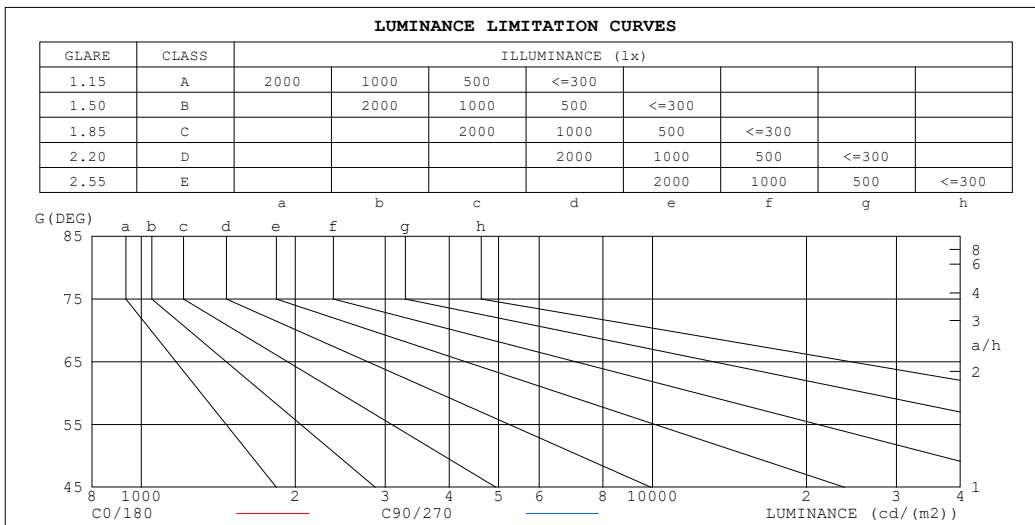
%lamp = 100.0%

C Range: 0 - 360DEG
 C Interval: 15.0DEG
 Test Speed: HIGH
 Temperature:25.3°C
 Operators:DAMIN
 Test Date:2024-01-22

γ Range: 0 - 90DEG
 γ Interval: 5.0DEG
 Test System:EVERFINE GO-2000B_V1 SYSTEM V2.00.473
 Humidity:65.0%
 Test Distance:9.401m [K=1.0000]
 Remarks:

LUMINANCE LIMITATION CURVES

Test:U:220.41V I:0.0606A P:7.3236W PF:0.5483 Freq:50.00Hz Lamp Flux:615.82x1 lm		
NAME:	TYPE:	WEIGHT:
SPEC.:	DIM.:	SERIAL No.:
MFR.: EVERFINE	SUR.:	Shielding Angle:



LUMINANCE cd/(m2)		
G (DEG)	C0/180	C90/270
85	0	0
80	0	0
75	0	0
70	0	0
65	0	0
60	1	1
55	5	7
50	12	16
45	23	29

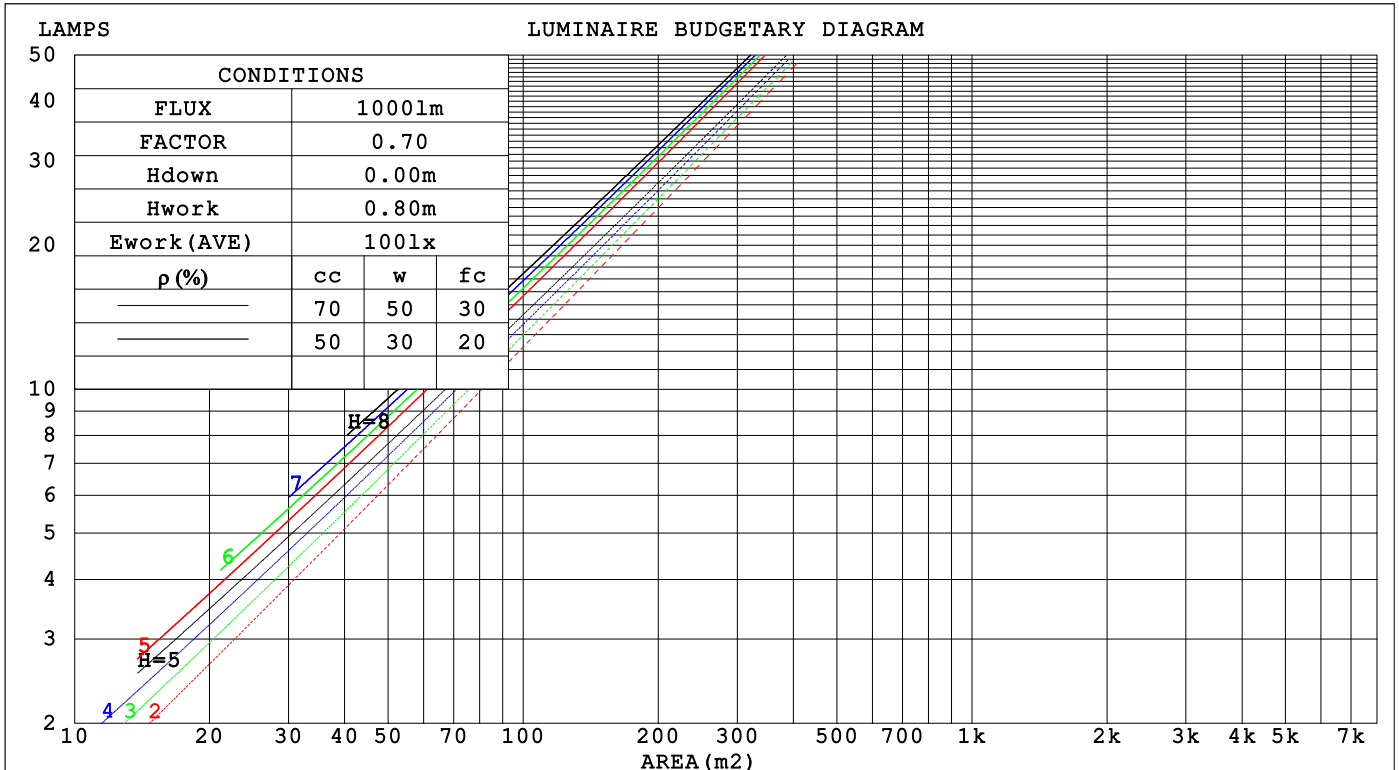
C Range: 0 - 360DEG
 C Interval: 15.0DEG
 Test Speed: HIGH
 Temperature:25.3°C
 Operators:DAMIN
 Test Date:2024-01-22

γ Range: 0 - 90DEG
 γ Interval: 5.0DEG
 Test System:EVERFINE GO-2000B_V1 SYSTEM V2.00.473
 Humidity:65.0%
 Test Distance:9.401m [K=1.0000]
 Remarks:

CU AND LUMINAIRE BUDGETARY ESTIMATE DIAGRAM

Test:U:220.41V I:0.0606A P:7.3236W PF:0.5483 Freq:50.00Hz Lamp Flux:615.82x1 lm		
NAME:	TYPE:	WEIGHT:
SPEC.:	DIM.:	SERIAL No.:
MFR.: EVERFINE	SUR.:	Shielding Angle:

ρcc	80%			70%			50%			30%			10%			0
ρw	50%	30%	10%	50%	30%	10%	50%	30%	10%	50%	30%	10%	50%	30%	10%	0
ρfc	20%			20%			20%			20%			20%			0
RCR	RCR:Room Cavity Ratio															
	Coefficients of Utilization(CU)															
0.0	1.19	1.19	1.19	1.16	1.16	1.16	1.11	1.11	1.11	1.06	1.06	1.06	1.02	1.02	1.02	1.00
1.0	1.13	1.11	1.09	1.11	1.09	1.08	1.07	1.05	1.04	1.03	1.02	1.01	.00	.99	.98	.97
2.0	1.08	1.05	1.02	1.06	1.03	1.01	1.03	1.01	.99	.00	.98	.97	.97	.96	.95	.93
3.0	1.03	.99	.96	1.02	.98	.96	.99	.96	.94	.97	.95	.93	.95	.93	.91	.90
4.0	.99	.95	.92	.98	.94	.91	.96	.93	.90	.94	.91	.89	.92	.90	.88	.87
5.0	.95	.91	.88	.94	.90	.88	.93	.89	.87	.91	.88	.86	.90	.87	.85	.84
6.0	.92	.88	.85	.91	.87	.84	.90	.86	.84	.89	.86	.83	.87	.85	.83	.82
7.0	.89	.85	.82	.88	.84	.81	.87	.84	.81	.86	.83	.81	.85	.82	.80	.79
8.0	.86	.82	.79	.85	.81	.79	.85	.81	.78	.84	.80	.78	.83	.80	.78	.77
9.0	.83	.79	.76	.83	.79	.76	.82	.79	.76	.81	.78	.76	.81	.78	.76	.75
10.0	.81	.77	.74	.80	.77	.74	.80	.76	.74	.79	.76	.74	.79	.76	.74	.73



C Range: 0 - 360DEG
 C Interval: 15.0DEG
 Test Speed: HIGH
 Temperature:25.3°C
 Operators:DAMIN
 Test Date:2024-01-22

γ Range: 0 - 90DEG
 γ Interval: 5.0DEG
 Test System:EVERFINE GO-2000B_V1 SYSTEM V2.00.473
 Humidity:65.0%
 Test Distance:9.401m [K=1.0000]
 Remarks:

WEC AND CCEC

Test:U:220.41V I:0.0606A P:7.3236W PF:0.5483 Freq:50.00Hz								
Lamp Flux:615.82x1 lm								
NAME:			TYPE:			WEIGHT:		
SPEC.:			DIM.:			SERIAL No.:		
MFR.: EVERFINE			SUR.:			Shielding Angle:		

ρ_{CC}	80%			70%			50%			30%			10%			0
ρ_w	50%	30%	10%	50%	30%	10%	50%	30%	10%	50%	30%	10%	50%	30%	10%	0
ρ_{fc}	20%			20%			20%			20%			20%			0
RCR	RCR:Room Cavity Ratio						Wall Exitance Coefficients(WEC)									
0.0																
1.0	.137	.078	.025	.131	.075	.024	.118	.068	.022	.107	.062	.020	.096	.056	.018	
2.0	.127	.070	.021	.122	.067	.021	.112	.062	.019	.102	.057	.018	.094	.053	.017	
3.0	.119	.063	.019	.114	.061	.018	.106	.057	.017	.098	.054	.016	.091	.050	.016	
4.0	.112	.058	.017	.108	.056	.017	.101	.053	.016	.094	.050	.015	.088	.048	.015	
5.0	.105	.054	.016	.102	.052	.015	.096	.050	.015	.090	.048	.014	.085	.045	.014	
6.0	.100	.050	.014	.097	.049	.014	.092	.047	.014	.087	.045	.013	.082	.043	.013	
7.0	.095	.047	.013	.093	.046	.013	.088	.044	.013	.084	.043	.012	.080	.041	.012	
8.0	.091	.044	.012	.089	.044	.012	.085	.042	.012	.081	.041	.012	.077	.040	.012	
9.0	.087	.042	.012	.085	.041	.012	.081	.040	.011	.078	.039	.011	.075	.038	.011	
10.0	.083	.040	.011	.082	.039	.011	.078	.038	.011	.075	.037	.011	.073	.037	.010	

ρ_{CC}	80%			70%			50%			30%			10%			0
ρ_w	50%	30%	10%	50%	30%	10%	50%	30%	10%	50%	30%	10%	50%	30%	10%	0
ρ_{fc}	20%			20%			20%			20%			20%			0
RCR	RCR:Room Cavity Ratio						Ceiling Cavity Exitance Coefficients(CCEC)									
0.0	.190	.190	.190	.163	.163	.163	.111	.111	.111	.064	.064	.064	.020	.020	.020	
1.0	.168	.158	.148	.144	.135	.127	.099	.093	.088	.057	.054	.051	.018	.017	.017	
2.0	.150	.133	.118	.129	.114	.102	.088	.079	.071	.051	.046	.042	.016	.015	.014	
3.0	.135	.113	.096	.116	.098	.083	.080	.068	.058	.046	.040	.034	.015	.013	.011	
4.0	.123	.098	.079	.105	.085	.068	.073	.059	.048	.042	.035	.029	.014	.011	.009	
5.0	.113	.086	.066	.097	.074	.057	.067	.052	.040	.039	.030	.024	.012	.010	.008	
6.0	.104	.076	.056	.089	.066	.048	.061	.046	.034	.036	.027	.020	.012	.009	.007	
7.0	.096	.067	.047	.083	.059	.041	.057	.041	.029	.033	.024	.017	.011	.008	.006	
8.0	.090	.061	.041	.077	.053	.036	.053	.037	.025	.031	.022	.015	.010	.007	.005	
9.0	.084	.055	.035	.073	.048	.031	.050	.034	.022	.029	.020	.013	.009	.007	.004	
10.0	.079	.050	.031	.068	.044	.027	.047	.031	.019	.028	.018	.012	.009	.006	.004	

C Range: 0 - 360DEG
 C Interval: 15.0DEG
 Test Speed: HIGH
 Temperature:25.3°C
 Operators:DAMIN
 Test Date:2024-01-22

γ Range: 0 - 90DEG
 γ Interval: 5.0DEG
 Test System:EVERFINE GO-2000B_V1 SYSTEM V2.00.473
 Humidity:65.0%
 Test Distance:9.401m [K=1.0000]
 Remarks:

UGR(Unified Glare Rating) Table

Test:U:220.41V I:0.0606A P:7.3236W PF:0.5483 Freq:50.00Hz										
Lamp Flux:615.82x1 lm										
NAME:			TYPE:				WEIGHT:			
SPEC.:			DIM.:				SERIAL No.:			
MFR.: EVERFINE			SUR.:				Shielding Angle:			
ceiling/cavity	0.7	0.7	0.5	0.5	0.3	0.7	0.7	0.5	0.5	0.3
walls	0.5	0.3	0.5	0.3	0.3	0.5	0.3	0.5	0.3	0.3
working plane	0.2	0.2	0.2	0.2	0.2	0.2	0.2	0.2	0.2	0.2
Room dimensions	Viewed crosswise					Viewed endwise				
x = 2H y = 2H	-14.3	-13.7	-14.1	-13.5	-13.4	-14.5	-13.9	-14.3	-13.7	-13.6
3H	-14.5	-13.8	-14.2	-13.7	-13.5	-14.7	-14.1	-14.4	-13.9	-13.7
4H	-14.5	-14.0	-14.3	-13.7	-13.5	-14.8	-14.2	-14.5	-14.0	-13.8
6H	-14.6	-14.1	-14.3	-13.8	-13.6	-14.8	-14.3	-14.6	-14.1	-13.8
8H	-14.7	-14.1	-14.4	-13.9	-13.6	-14.9	-14.4	-14.6	-14.1	-13.9
12H	-14.7	-14.2	-14.4	-13.9	-13.7	-14.9	-14.4	-14.6	-14.2	-13.9
4H 2H	-14.5	-14.0	-14.3	-13.7	-13.5	-14.7	-14.2	-14.5	-14.0	-13.8
3H	-14.7	-14.2	-14.4	-13.9	-13.7	-14.9	-14.4	-14.6	-14.2	-13.9
4H	-14.8	-14.3	-14.5	-14.0	-13.7	-15.0	-14.6	-14.7	-14.3	-14.0
6H	-14.9	-14.5	-14.5	-14.2	-13.8	-15.1	-14.7	-14.8	-14.4	-14.0
8H	-15.0	-14.6	-14.6	-14.2	-13.9	-15.2	-14.8	-14.8	-14.4	-14.1
12H	-15.0	-14.7	-14.6	-14.3	-13.9	-15.2	-14.9	-14.8	-14.5	-14.1
8H 4H	-15.0	-14.6	-14.6	-14.2	-13.9	-15.2	-14.8	-14.8	-14.4	-14.1
6H	-15.1	-14.8	-14.7	-14.4	-14.0	-15.3	-15.0	-14.9	-14.6	-14.2
8H	-15.1	-14.9	-14.7	-14.4	-14.0	-15.4	-15.1	-14.9	-14.7	-14.2
12H	-15.2	-15.0	-14.7	-14.5	-14.0	-15.4	-15.2	-15.0	-14.7	-14.3
12H 4H	-15.0	-14.7	-14.6	-14.3	-13.9	-15.2	-14.9	-14.8	-14.5	-14.1
6H	-15.1	-14.9	-14.7	-14.4	-14.0	-15.4	-15.1	-14.9	-14.7	-14.2
8H	-15.2	-15.0	-14.7	-14.5	-14.0	-15.4	-15.2	-15.0	-14.7	-14.3
Variations with the observer position at spacings(CIE Pub.117):										
S = 1.0H	+ 2.9 / -30.4					+ 3.0 / -33.3				
1.5H	+ 4.9 / -18.3					+ 4.8 / -21.5				
2.0H	+ 7.8 / - 1.5					+ 8.0 / - 1.5				

CIE Pub.117, 615.8 lm Total Lamp Luminous Flux Correct (8log(F/F0) = -1.7)
 Area: 0.1 m2

C Range: 0 - 360DEG
 C Interval: 15.0DEG
 Test Speed: HIGH
 Temperature:25.3°C
 Operators:DAMIN
 Test Date:2024-01-22

γ Range: 0 - 90DEG
 γ Interval: 5.0DEG
 Test System:EVERFINE GO-2000B_V1 SYSTEM V2.00.473
 Humidity:65.0%
 Test Distance:9.401m [K=1.0000]
 Remarks:

UTILIZATION FACTORS TABLE

Test:U:220.41V I:0.0606A P:7.3236W PF:0.5483 Freq:50.00Hz Lamp Flux:615.82x1 lm		
NAME:	TYPE:	WEIGHT:
SPEC.:	DIM.:	SERIAL No.:
MFR.: EVERFINE	SUR.:	Shielding Angle:

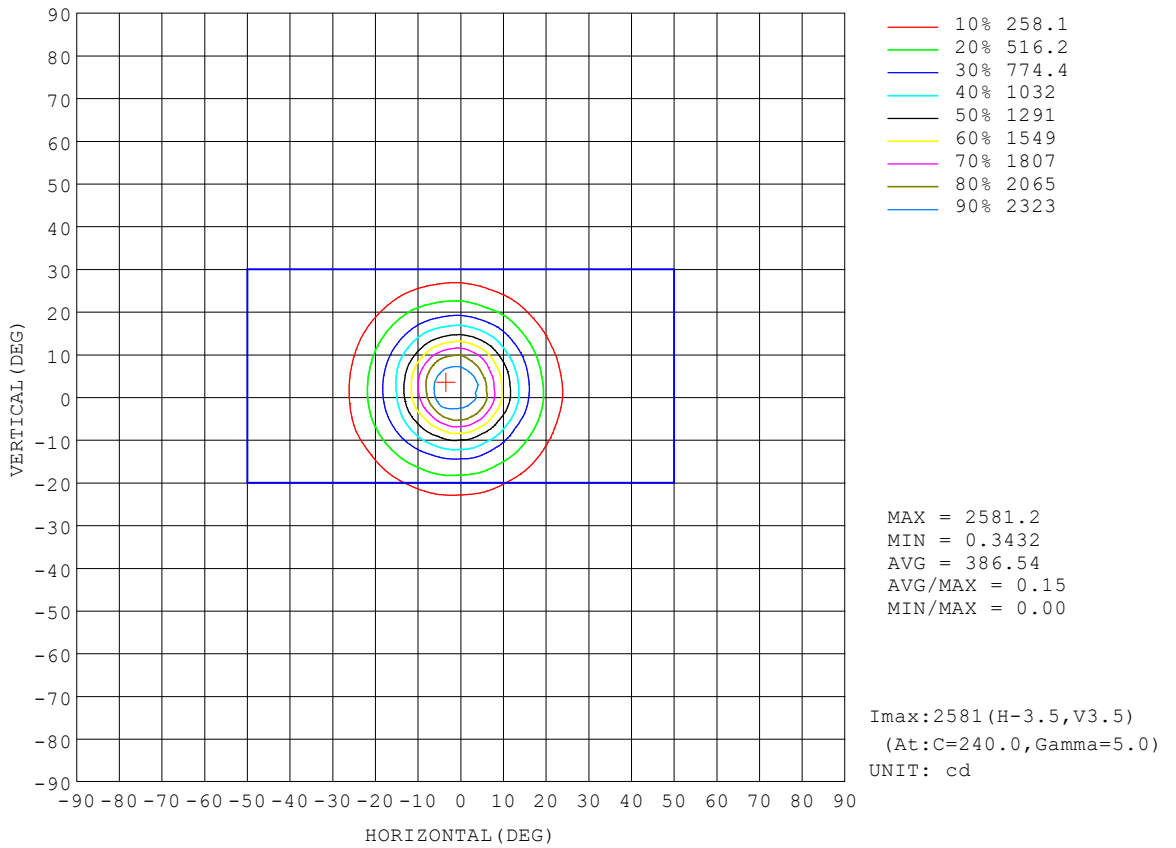
REFLECTANCE										
Ceiling	0.8	0.8	0.8	0.7	0.7	0.7	0.5	0.5	0.5	0
Walls	0.7	0.5	0.3	0.7	0.5	0.3	0.7	0.5	0.3	0
Working plane	0.2	0.2	0.2	0.2	0.2	0.2	0.2	0.2	0.2	0
ROOM INDEX	UTILIZATION FACTORS (PERCENT) $k(RI) \times RCR = 5$									
$k = 0.60$	91	86	82	91	85	82	90	85	82	79
0.80	98	93	90	98	93	90	96	92	89	86
1.00	102	97	94	101	96	93	100	96	93	89
1.25	105	101	98	104	100	97	103	99	97	93
1.50	108	104	101	107	103	100	104	101	99	95
2.00	110	106	103	109	105	103	106	103	101	96
2.50	111	108	105	110	107	104	107	104	103	97
3.00	113	110	107	111	108	106	108	106	104	98
4.00	115	112	110	113	111	109	109	107	106	99
5.00	116	114	112	114	112	111	110	109	107	100
ROOM INDEX	UF(total)									Direct
According to DIN EN 13032-2 2004			Suspended				SHRNOM = 1.25			

C Range: 0 - 360DEG
 C Interval: 15.0DEG
 Test Speed: HIGH
 Temperature:25.3°C
 Operators:DAMIN
 Test Date:2024-01-22

γ Range: 0 - 90DEG
 γ Interval: 5.0DEG
 Test System:EVERFINE GO-2000B_V1 SYSTEM V2.00.473
 Humidity:65.0%
 Test Distance:9.401m [K=1.0000]
 Remarks:

ISOCANDELA DIAGRAM

Test:U:220.41V I:0.0606A P:7.3236W PF:0.5483 Freq:50.00Hz Lamp Flux:615.82x1 lm		
NAME:	TYPE:	WEIGHT:
SPEC.:	DIM.:	SERIAL No.:
MFR.: EVERFINE	SUR.:	Shielding Angle:

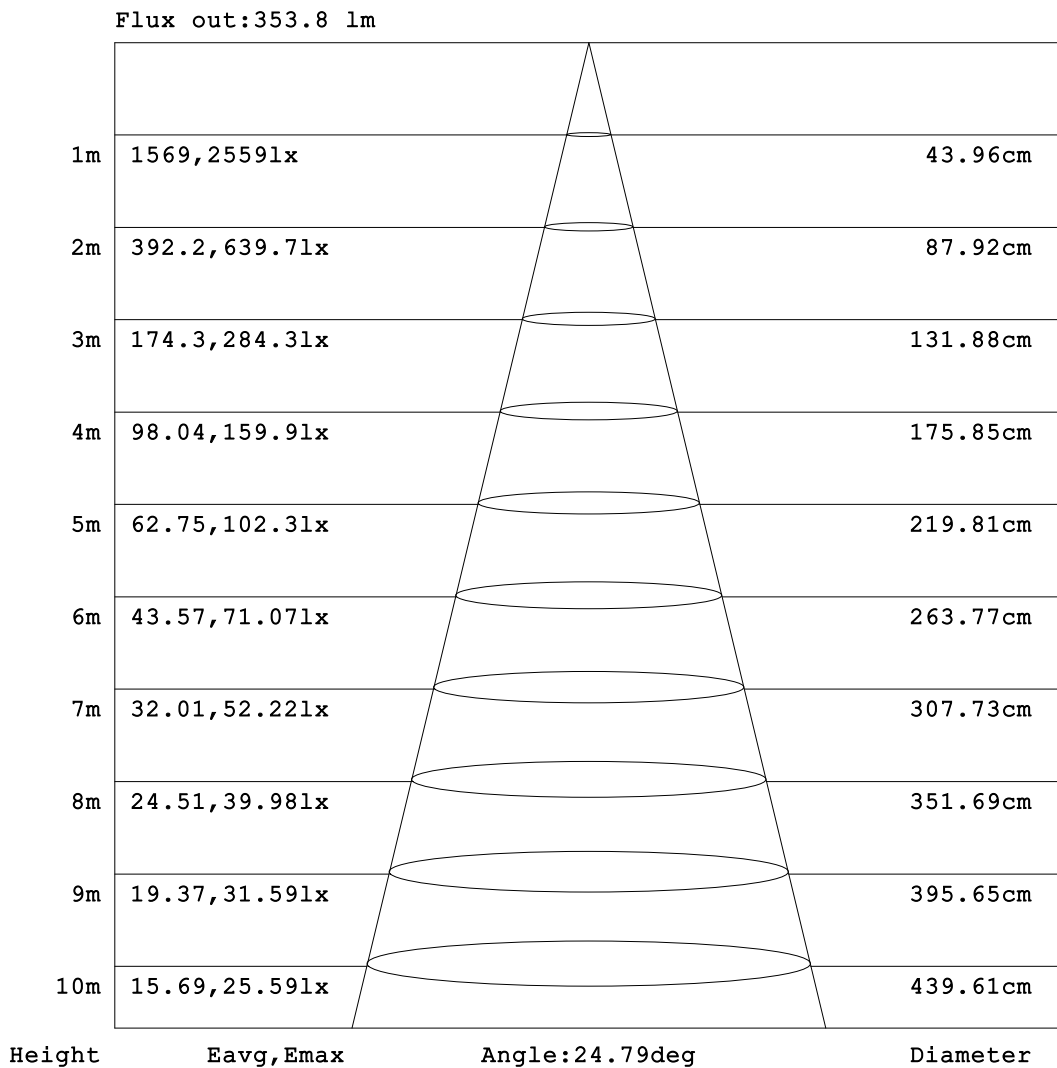


C Range: 0 - 360DEG
 C Interval: 15.0DEG
 Test Speed: HIGH
 Temperature:25.3°C
 Operators:DAMIN
 Test Date:2024-01-22

γ Range: 0 - 90DEG
 γ Interval: 5.0DEG
 Test System:EVERFINE GO-2000B_V1 SYSTEM V2.00.473
 Humidity:65.0%
 Test Distance:9.401m [K=1.0000]
 Remarks:

AAI Figure

Test:U:220.41V I:0.0606A P:7.3236W PF:0.5483 Freq:50.00Hz Lamp Flux:615.82x1 lm		
NAME:	TYPE:	WEIGHT:
SPEC.:	DIM.:	SERIAL No.:
MFR.: EVERFINE	SUR.:	Shielding Angle:



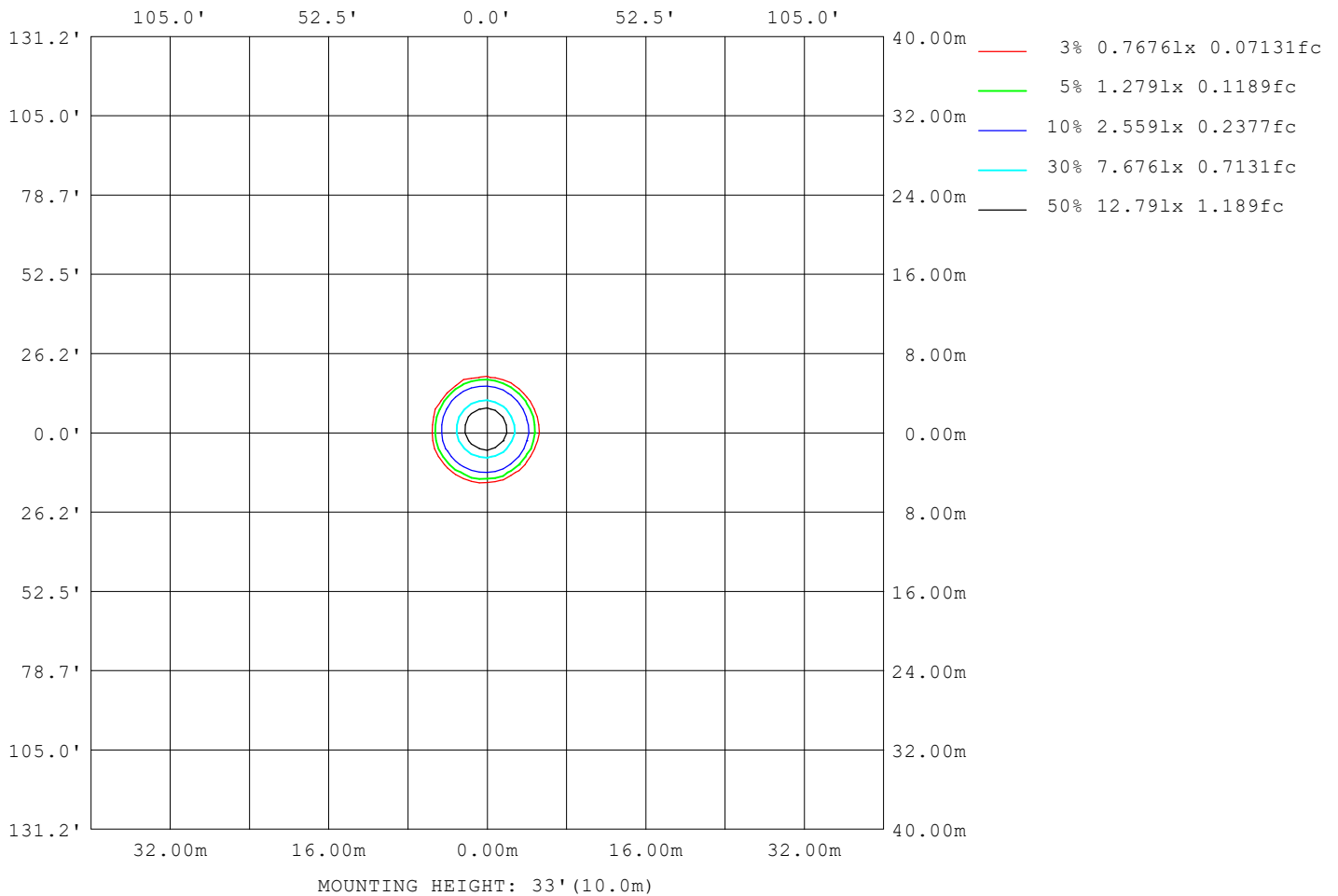
Note:The Curves indicate the illuminated area and the average illumination when the luminaire is at different distance.

C Range: 0 - 360DEG
 C Interval: 15.0DEG
 Test Speed: HIGH
 Temperature:25.3°C
 Operators:DAMIN
 Test Date:2024-01-22

γ Range: 0 - 90DEG
 γ Interval: 5.0DEG
 Test System:EVERFINE GO-2000B_V1 SYSTEM V2.00.473
 Humidity:65.0%
 Test Distance:9.401m [K=1.0000]
 Remarks:

ISOLUX DIAGRAM

Test:U:220.41V I:0.0606A P:7.3236W PF:0.5483 Freq:50.00Hz Lamp Flux:615.82x1 lm		
NAME:	TYPE:	WEIGHT:
SPEC.:	DIM.:	SERIAL No.:
MFR.: EVERFINE	SUR.:	Shielding Angle:



C Range: 0 - 360DEG
C Interval: 15.0DEG
Test Speed: HIGH
Temperature:25.3°C
Operators:DAMIN
Test Date:2024-01-22

γ Range: 0 - 90DEG
γ Interval: 5.0DEG
Test System:EVERFINE GO-2000B_V1 SYSTEM V2.00.473
Humidity:65.0%
Test Distance:9.401m [K=1.0000]
Remarks:

LED Avg.L Report

Test:U:220.41V I:0.0606A P:7.3236W PF:0.5483 Freq:50.00Hz Lamp Flux:615.82x1 lm		
NAME:	TYPE:	WEIGHT:
SPEC.:	DIM.:	SERIAL No.:
MFR.: EVERFINE	SUR.:	Shielding Angle:

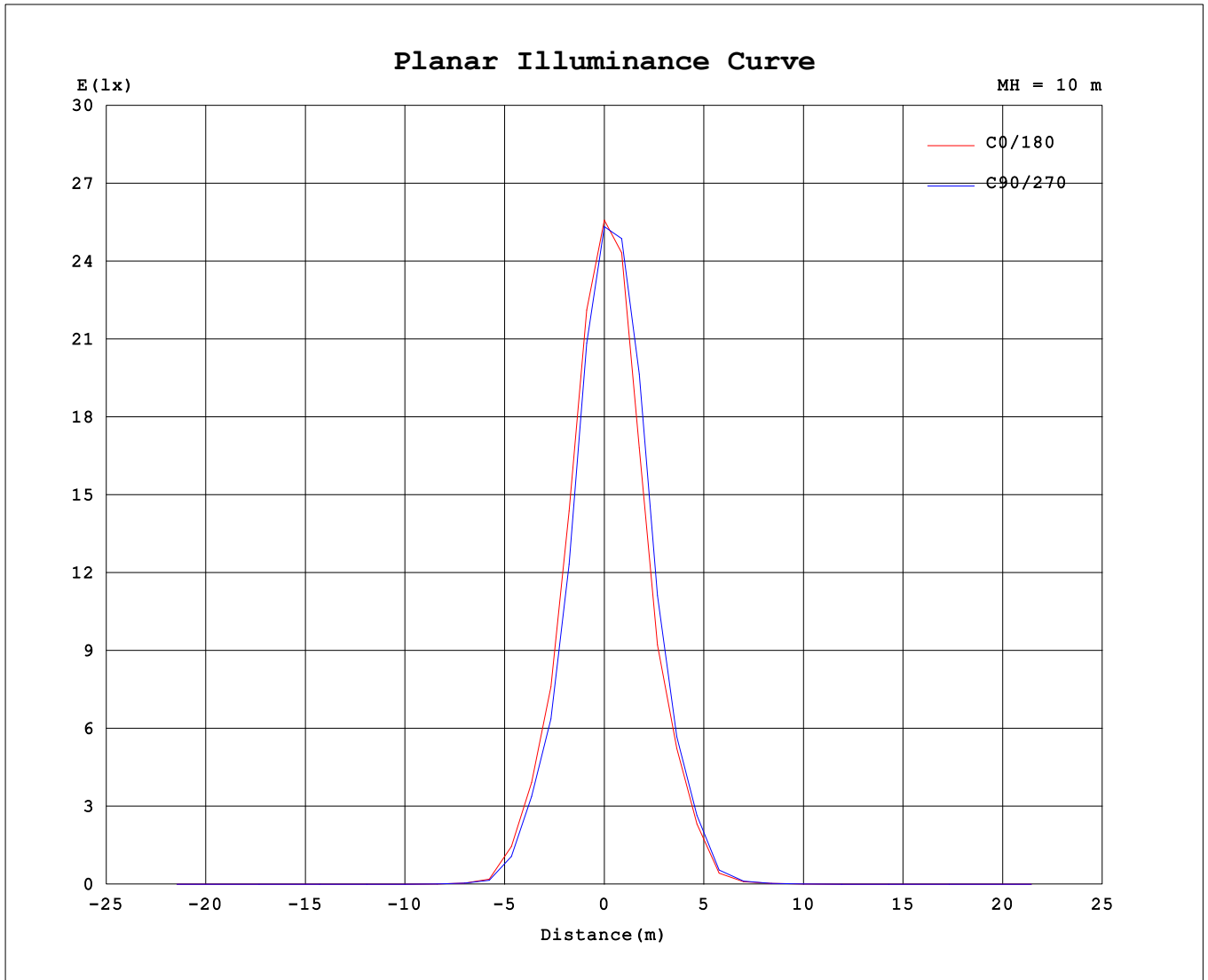
AvgL	cd/m2
L_0~180 (65) av	0
L_0~180 (75) av	0
L_0~180 (85) av	0
L_90~270 (65) av	0
L_90~270 (75) av	0
L_90~270 (85) av	0
L_45 (65) av	0
L_45 (75) av	0
L_45 (85) av	0

Standard: GB/T 29293-2012

C Range: 0 - 360DEG
 C Interval: 15.0DEG
 Test Speed: HIGH
 Temperature:25.3°C
 Operators:DAMIN
 Test Date:2024-01-22

γ Range: 0 - 90DEG
 γ Interval: 5.0DEG
 Test System:EVERFINE GO-2000B_V1 SYSTEM V2.00.473
 Humidity:65.0%
 Test Distance:9.401m [K=1.0000]
 Remarks:

Planar Illuminance Curve



C Range: 0 - 360DEG
 C Interval: 15.0DEG
 Test Speed: HIGH
 Temperature: 25.3°C
 Operators: DAMIN
 Test Date: 2024-01-22

γ Range: 0 - 90DEG
 γ Interval: 5.0DEG
 Test System: EVERFINE GO-2000B_V1 SYSTEM V2.00.473
 Humidity: 65.0%
 Test Distance: 9.401m [K=1.0000]
 Remarks:

LUMINOUS DISTRIBUTION INTENSITY DATA

Test:U:220.41V I:0.0606A P:7.3236W PF:0.5483 Freq:50.00Hz Lamp Flux:615.82x1 lm		
NAME:	TYPE:	WEIGHT:
SPEC.:	DIM.:	SERIAL No.:
MFR.: EVERFINE	SUR.:	Shielding Angle:

Table--1

UNIT: cd

C (DEG) \ γ (DEG)	0	15	30	45	60	75	90	105	120	135	150	165	180	195	210	225	240	255	270
0	2538	2538	2538	2538	2538	2538	2538	2538	2538	2538	2538	2538	2538	2538	2538	2538	2538	2538	2538
5	2220	2182	2131	2114	2090	2106	2112	2162	2198	2272	2321	2397	2441	2497	2557	2571	2576	2546	2521
10	1493	1418	1338	1310	1264	1281	1293	1337	1358	1445	1520	1658	1745	1836	1967	2034	2092	2073	2061
15	838	795	725	709	693	711	709	745	791	851	913	973	1015	1087	1180	1230	1273	1249	1237
20	468	437	416	405	391	404	409	439	456	505	550	599	626	655	692	719	734	699	687
25	194	150	134	134	127	143	145	169	188	221	249	297	310	336	369	386	401	374	357
30	30.4	27.9	25.3	24.5	22.5	24.0	24.9	28.8	33.0	43.2	50.8	61.5	66.2	75.0	86.8	92.1	104	94.5	84.7
35	8.77	8.48	7.88	7.77	7.60	7.96	8.26	9.31	11.7	14.8	16.8	18.5	18.8	20.2	22.3	25.4	28.2	26.0	22.7
40	3.62	3.52	3.74	3.86	3.65	3.71	3.90	4.40	5.18	6.81	8.18	8.76	7.79	7.94	9.61	11.1	11.1	9.34	7.85
45	1.65	1.53	1.89	2.04	1.87	1.78	2.02	2.25	2.51	3.42	4.29	4.52	3.54	3.47	4.82	5.88	5.49	4.10	3.54
50	0.76	0.62	0.89	0.99	0.93	0.79	1.02	1.13	1.18	1.46	2.22	2.30	1.57	1.44	2.29	3.02	2.61	1.76	1.69
55	0.27	0.15	0.28	0.28	0.28	0.22	0.38	0.41	0.48	0.51	0.98	1.02	0.60	0.56	0.96	1.38	1.08	0.69	0.71
60	0.04	0.00	0.04	0.00	0.02	0.00	0.03	0.00	0.04	0.04	0.21	0.21	0.12	0.16	0.20	0.40	0.19	0.15	0.11
65	0.00	0.00	0.00	0.00	0.00	0.00	0.00	0.00	0.00	0.00	0.00	0.00	0.00	0.00	0.00	0.00	0.00	0.00	0.00
70	0.00	0.00	0.00	0.00	0.00	0.00	0.00	0.00	0.00	0.00	0.00	0.00	0.00	0.00	0.00	0.00	0.00	0.00	0.00
75	0.00	0.00	0.00	0.00	0.00	0.00	0.00	0.00	0.00	0.00	0.00	0.00	0.00	0.00	0.00	0.00	0.00	0.00	0.00
80	0.00	0.00	0.00	0.00	0.00	0.00	0.00	0.00	0.00	0.00	0.00	0.00	0.00	0.00	0.00	0.00	0.00	0.00	0.00
85	0.00	0.00	0.00	0.00	0.00	0.00	0.00	0.00	0.00	0.00	0.00	0.00	0.00	0.00	0.00	0.00	0.00	0.00	0.00
90	0.00	0.00	0.00	0.00	0.00	0.00	0.00	0.00	0.00	0.00	0.00	0.00	0.00	0.00	0.00	0.00	0.00	0.00	0.00

C Range: 0 - 360DEG
 C Interval: 15.0DEG
 Test Speed: HIGH
 Temperature:25.3°C
 Operators:DAMIN
 Test Date:2024-01-22

γ Range: 0 - 90DEG
 γ Interval: 5.0DEG
 Test System:EVERFINE GO-2000B_V1 SYSTEM V2.00.473
 Humidity:65.0%
 Test Distance:9.401m [K=1.0000]
 Remarks:

LUMINOUS DISTRIBUTION INTENSITY DATA

Test:U:220.41V I:0.0606A P:7.3236W PF:0.5483 Freq:50.00Hz Lamp Flux:615.82x1 lm		
NAME:	TYPE:	WEIGHT:
SPEC.:	DIM.:	SERIAL No.:
MFR.: EVERFINE	SUR.:	Shielding Angle:

Table--2

UNIT: cd

C (DEG) \ γ (DEG)	285	300	315	330	345														
0	2538	2538	2538	2538	2538														
5	2470	2429	2364	2315	2254														
10	1960	1870	1739	1651	1551														
15	1184	1132	1041	967	898														
20	636	621	567	531	487														
25	314	290	251	218	207														
30	69.6	57.3	46.1	38.6	33.1														
35	18.0	15.0	12.5	10.7	8.99														
40	6.57	6.01	5.24	4.75	3.99														
45	3.20	2.82	2.56	2.46	2.06														
50	1.61	1.33	1.26	1.25	1.01														
55	0.68	0.46	0.47	0.48	0.40														
60	0.13	0.01	0.05	0.02	0.07														
65	0.00	0.00	0.00	0.00	0.00														
70	0.00	0.00	0.00	0.00	0.00														
75	0.00	0.00	0.00	0.00	0.00														
80	0.00	0.00	0.00	0.00	0.00														
85	0.00	0.00	0.00	0.00	0.00														
90	0.00	0.00	0.00	0.00	0.00														

C Range: 0 - 360DEG
 C Interval: 15.0DEG
 Test Speed: HIGH
 Temperature:25.3°C
 Operators:DAMIN
 Test Date:2024-01-22

γ Range: 0 - 90DEG
 γ Interval: 5.0DEG
 Test System:EVERFINE GO-2000B_V1 SYSTEM V2.00.473
 Humidity:65.0%
 Test Distance:9.401m [K=1.0000]
 Remarks: