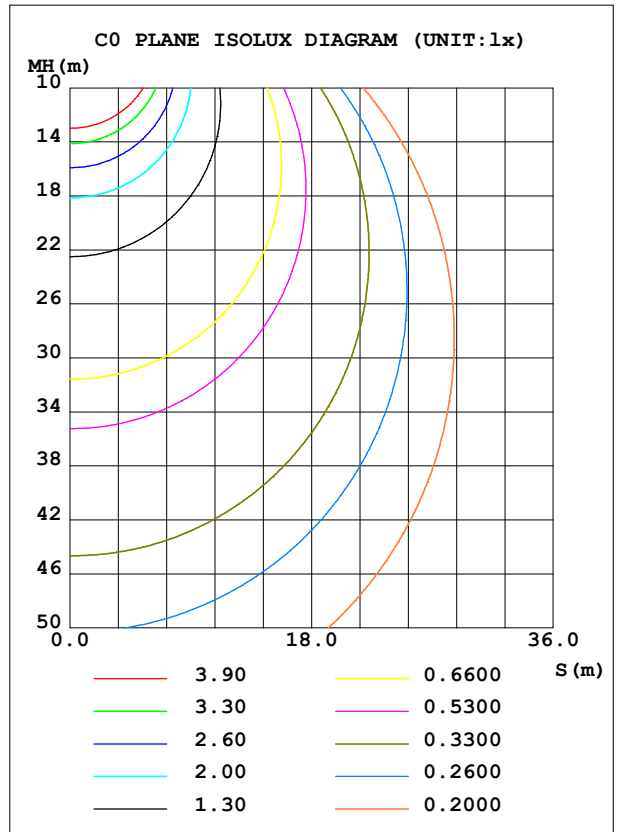
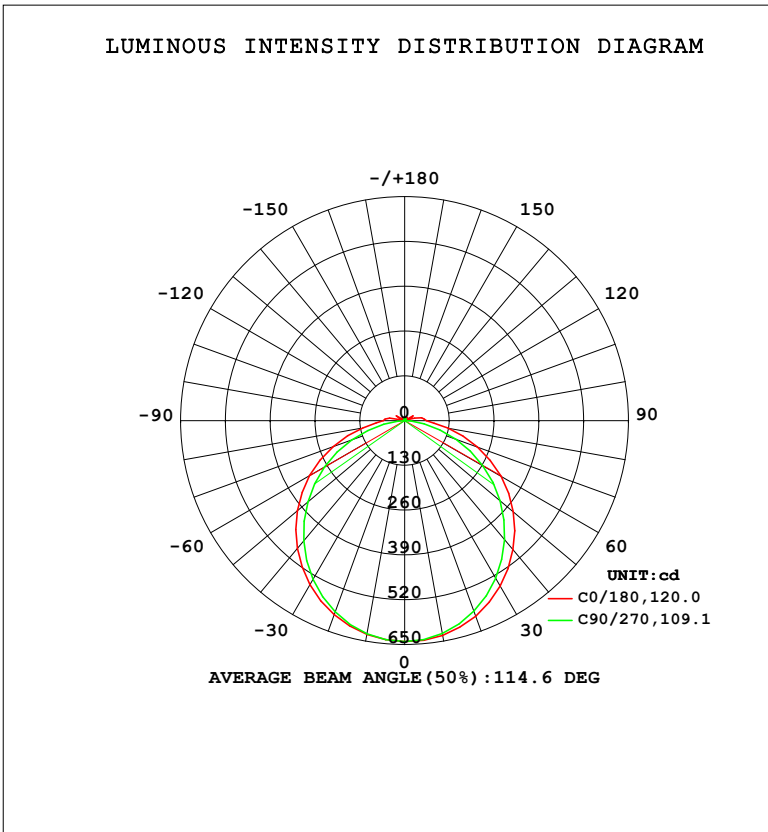


**LUMINAIRE PHOTOMETRIC TEST REPORT**

Test:U:220.28V I:0.0951A P:20.338W PF:0.9707 Freq:50.00Hz Lamp Flux:1996.34x1 lm		
NAME: 明装	TYPE: 0系列	WEIGHT:
SPEC.:	DIM.:	SERIAL No.:
MFR.: EVERFINE	SUR.: 1	Shielding Angle:

DATA OF LAMP		PHOTOMETRIC DATA				Eff: 98.16 lm/W
MODEL	03	I <sub>max</sub> (cd)	641.3	S/MH (C0/180)	1.28	
NOMINAL POWER (W)	20	LOR (%)	100.0	S/MH (C90/270)	1.24	
RATED VOLTAGE (V)	220	TOTAL FLUX (lm)	1996.3	η UP, DN (C0-180)	1.8, 48.2	
NOMINAL FLUX (lm)	1996.34	CIE CLASS	DIRECT	η UP, DN (C180-360)	1.7, 48.4	
LAMPS INSIDE	1	η up (%)	3.5	CIBSE SHR NOM	1.25	
TEST VOLTAGE (V)	219.5	η down (%)	96.5	CIBSE SHR MAX	1.35	



C Range: 0 - 360DEG  
 C Interval: 22.5DEG  
 Test Speed: HIGH  
 Temperature: 25.3°C  
 Operators: DAMIN  
 Test Date: 2023-11-14

γ Range: 0 - 180DEG  
 γ Interval: 5.0DEG  
 Test System: EVERFINE GO-2000B\_V1 SYSTEM V2.00.473  
 Humidity: 65.0%  
 Test Distance: 9.401m [K=1.0000]  
 Remarks:

ZONAL FLUX DIAGRAM

ZONAL FLUX DIAGRAM:

$\gamma$	C0	C45	C90	C135	C180	C225	C270	C315	$\gamma$	$\Phi$ zone	$\Phi$ total	%lum,lamp
10	632.8	630.6	627.1	629.0	630.5	629.4	628.6	631.7	0- 10	60.68	60.68	3.04,3.04
20	603.8	597.1	588.6	594.0	599.3	593.9	590.8	599.1	10- 20	173.8	234.4	11.7,11.7
30	555.1	542.1	528.7	539.8	549.8	542.3	532.0	546.6	20- 30	263.3	497.8	24.9,24.9
40	489.6	472.4	451.9	469.9	484.3	472.7	455.7	478.2	30- 40	318.5	816.2	40.9,40.9
50	411.4	389.9	361.3	387.4	406.6	390.7	367.0	395.9	40- 50	333.3	1150	57.6,57.6
60	322.9	297.8	262.7	295.4	318.7	299.5	269.1	304.3	50- 60	307.6	1457	73,73
70	225.3	199.0	158.4	196.7	221.3	200.5	163.9	204.6	60- 70	244.8	1702	85.3,85.3
80	127.7	101.8	57.84	100.4	124.0	102.9	62.06	106.0	70- 80	155.5	1857	93,93
90	63.39	40.94	1.108	41.41	63.06	41.56	1.269	42.30	80- 90	69.44	1927	96.5,96.5
100	49.99	10.44	1.601	3.326	44.48	3.758	1.723	11.02	90-100	32.08	1959	98.1,98.1
110	5.503	9.369	2.229	8.346	3.491	7.466	2.346	8.343	100-110	9.492	1969	98.6,98.6
120	28.39	3.088	2.894	3.066	28.28	3.245	3.095	3.233	110-120	8.778	1977	99,99
130	3.702	9.066	3.607	3.781	3.933	4.031	3.772	8.783	120-130	5.216	1982	99.3,99.3
140	12.40	8.330	4.200	8.111	4.396	8.274	4.376	7.944	130-140	4.533	1987	99.5,99.5
150	9.267	5.360	4.641	5.232	9.537	5.307	4.793	5.398	140-150	4.635	1992	99.8,99.8
160	5.197	5.321	5.064	5.199	5.324	5.243	5.120	5.364	150-160	2.608	1994	99.9,99.9
170	5.458	5.638	5.530	5.492	5.564	5.525	5.542	5.682	160-170	1.524	1996	100,100
180	5.757	5.776	5.748	5.798	5.816	5.812	5.766	5.816	170-180	0.5422	1996	100,100
DEG	LUMINOUS INTENSITY:cd									UNIT:lm		

Conical surface Flux(90deg): 983.6 lm

%lum = 49.3%

%lamp = 49.3%

Conical surface Flux(130deg): 1589.4 lm

%lum = 79.6%

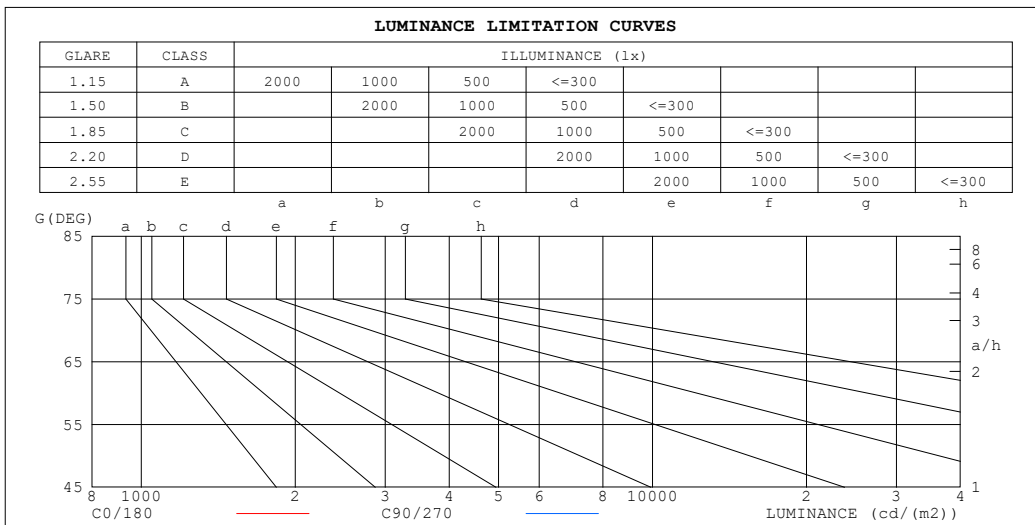
%lamp = 79.6%

C Range: 0 - 360DEG  
 C Interval: 22.5DEG  
 Test Speed: HIGH  
 Temperature:25.3°C  
 Operators:DAMIN  
 Test Date:2023-11-14

$\gamma$  Range: 0 - 180DEG  
 $\gamma$  Interval: 5.0DEG  
 Test System:EVERFINE GO-2000B\_V1 SYSTEM V2.00.473  
 Humidity:65.0%  
 Test Distance:9.401m [K=1.0000]  
 Remarks:

**LUMINANCE LIMITATION CURVES**

Test:U:220.28V I:0.0951A P:20.338W PF:0.9707 Freq:50.00Hz Lamp Flux:1996.34x1 lm		
NAME: 明装	TYPE: 0系列	WEIGHT:
SPEC.:	DIM.:	SERIAL No.:
MFR.: EVERFINE	SUR.: 1	Shielding Angle:



LUMINANCE cd/(m2)		
G (DEG)	C0/180	C90/270
85	1019	221
80	755	332
75	695	409
70	676	461
65	667	496
60	663	523
55	659	544
50	657	560
45	656	574

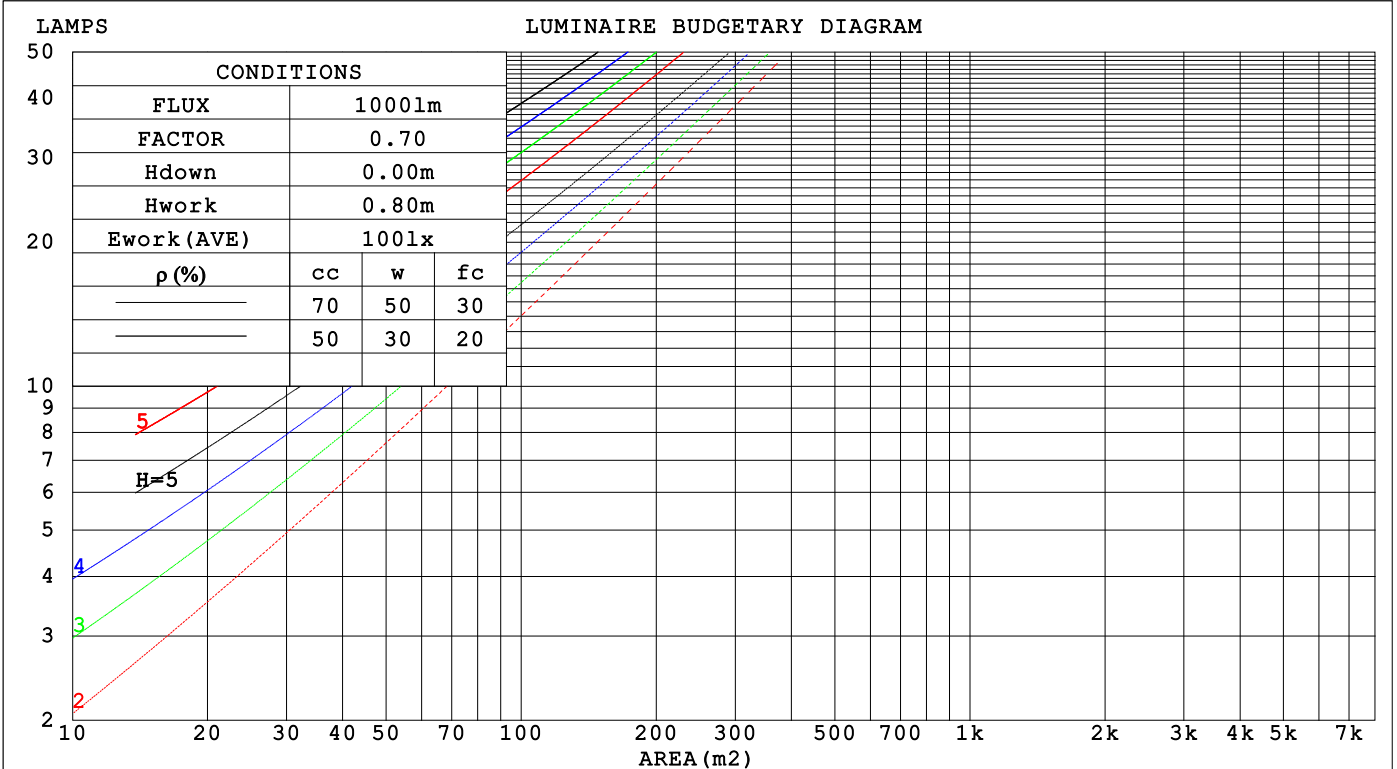
C Range: 0 - 360DEG  
 C Interval: 22.5DEG  
 Test Speed: HIGH  
 Temperature:25.3°C  
 Operators:DAMIN  
 Test Date:2023-11-14

γ Range: 0 - 180DEG  
 γ Interval: 5.0DEG  
 Test System:EVERFINE GO-2000B\_V1 SYSTEM V2.00.473  
 Humidity:65.0%  
 Test Distance:9.401m [K=1.0000]  
 Remarks:

**CU AND LUMINAIRE BUDGETARY ESTIMATE DIAGRAM**

Test:U:220.28V I:0.0951A P:20.338W PF:0.9707 Freq:50.00Hz Lamp Flux:1996.34x1 lm		
NAME: 明装	TYPE: 0系列	WEIGHT:
SPEC.:	DIM.:	SERIAL No.:
MFR.: EVERFINE	SUR.: 1	Shielding Angle:

ρcc	80%			70%			50%			30%			10%			0
ρw	50%	30%	10%	50%	30%	10%	50%	30%	10%	50%	30%	10%	50%	30%	10%	0
ρfc	20%			20%			20%			20%			20%			0
RCR	RCR:Room Cavity Ratio      Coefficients of Utilization(CU)															
0.0	1.18	1.18	1.18	1.15	1.15	1.15	1.09	1.09	1.09	1.04	1.04	1.04	.99	.99	.99	.97
1.0	1.02	.97	.93	.99	.95	.91	.94	.91	.88	.90	.87	.84	.86	.83	.81	.79
2.0	.88	.81	.75	.86	.80	.74	.82	.76	.72	.78	.74	.70	.75	.71	.67	.65
3.0	.77	.69	.62	.75	.68	.61	.72	.65	.60	.69	.63	.58	.66	.61	.57	.54
4.0	.68	.59	.52	.67	.58	.52	.64	.56	.51	.61	.55	.50	.58	.53	.49	.46
5.0	.61	.52	.45	.60	.51	.44	.57	.49	.44	.55	.48	.43	.52	.47	.42	.40
6.0	.55	.46	.39	.54	.45	.39	.51	.44	.38	.49	.43	.37	.47	.42	.37	.35
7.0	.50	.41	.34	.49	.40	.34	.47	.39	.34	.45	.38	.33	.43	.37	.33	.31
8.0	.45	.37	.31	.44	.36	.30	.43	.35	.30	.41	.34	.30	.40	.34	.29	.27
9.0	.41	.33	.27	.41	.33	.27	.39	.32	.27	.38	.31	.27	.37	.31	.26	.24
10.0	.38	.30	.25	.38	.30	.25	.36	.29	.24	.35	.29	.24	.34	.28	.24	.22



C Range: 0 - 360DEG  
 C Interval: 22.5DEG  
 Test Speed: HIGH  
 Temperature:25.3°C  
 Operators:DAMIN  
 Test Date:2023-11-14

γ Range: 0 - 180DEG  
 γ Interval: 5.0DEG  
 Test System:EVERFINE GO-2000B\_V1 SYSTEM V2.00.473  
 Humidity:65.0%  
 Test Distance:9.401m [K=1.0000]  
 Remarks:

**WEC AND CCEC**

Test:U:220.28V I:0.0951A P:20.338W PF:0.9707 Freq:50.00Hz								
Lamp Flux:1996.34x1 lm								
NAME: 明装			TYPE: 0系列			WEIGHT:		
SPEC.:			DIM.:			SERIAL No.:		
MFR.: EVERFINE			SUR.: 1			Shielding Angle:		

$\rho_{CC}$	80%			70%			50%			30%			10%			0
$\rho_w$	50%	30%	10%	50%	30%	10%	50%	30%	10%	50%	30%	10%	50%	30%	10%	0
$\rho_{fc}$	20%			20%			20%			20%			20%			0
RCR	RCR:Room Cavity Ratio						Wall Exitance Coefficients (WEC)									
0.0																
1.0	.332	.189	.060	.323	.184	.059	.308	.177	.056	.294	.170	.054	.281	.163	.053	
2.0	.304	.167	.051	.297	.164	.050	.283	.157	.049	.271	.152	.048	.259	.147	.046	
3.0	.278	.148	.044	.272	.145	.044	.259	.141	.043	.248	.136	.042	.238	.132	.041	
4.0	.255	.132	.039	.249	.130	.039	.238	.126	.038	.228	.122	.037	.219	.119	.036	
5.0	.234	.119	.035	.229	.118	.034	.219	.114	.034	.210	.111	.033	.202	.108	.032	
6.0	.217	.109	.031	.212	.107	.031	.203	.104	.030	.195	.101	.030	.188	.099	.029	
7.0	.201	.099	.028	.197	.098	.028	.189	.096	.028	.182	.093	.027	.175	.091	.027	
8.0	.187	.092	.026	.184	.090	.026	.177	.088	.025	.170	.086	.025	.164	.084	.024	
9.0	.175	.085	.024	.172	.084	.024	.166	.082	.023	.159	.080	.023	.154	.078	.023	
10.0	.165	.079	.022	.162	.078	.022	.156	.076	.021	.150	.075	.021	.145	.073	.021	

$\rho_{CC}$	80%			70%			50%			30%			10%			0
$\rho_w$	50%	30%	10%	50%	30%	10%	50%	30%	10%	50%	30%	10%	50%	30%	10%	0
$\rho_{fc}$	20%			20%			20%			20%			20%			0
RCR	RCR:Room Cavity Ratio						Ceiling Cavity Exitance Coefficients (CCEC)									
0.0	.217	.217	.217	.185	.185	.185	.127	.127	.127	.073	.073	.073	.023	.023	.023	
1.0	.209	.183	.159	.178	.157	.137	.122	.108	.095	.070	.062	.055	.022	.020	.018	
2.0	.201	.159	.123	.172	.137	.107	.118	.095	.074	.068	.055	.044	.022	.018	.014	
3.0	.193	.141	.100	.166	.122	.087	.114	.085	.061	.066	.049	.036	.021	.016	.012	
4.0	.185	.128	.085	.159	.111	.074	.109	.077	.052	.063	.045	.031	.020	.015	.010	
5.0	.178	.118	.074	.153	.102	.064	.105	.071	.045	.061	.042	.027	.020	.014	.009	
6.0	.171	.110	.066	.147	.095	.058	.101	.067	.041	.059	.039	.024	.019	.013	.008	
7.0	.164	.103	.060	.141	.089	.053	.097	.063	.037	.057	.037	.022	.018	.012	.007	
8.0	.157	.097	.056	.135	.084	.049	.094	.059	.035	.054	.035	.021	.018	.011	.007	
9.0	.151	.092	.053	.130	.080	.046	.090	.056	.033	.052	.033	.019	.017	.011	.006	
10.0	.145	.088	.050	.125	.076	.044	.087	.054	.031	.051	.032	.018	.016	.010	.006	

C Range: 0 - 360DEG  
 C Interval: 22.5DEG  
 Test Speed: HIGH  
 Temperature:25.3°C  
 Operators:DAMIN  
 Test Date:2023-11-14

$\gamma$  Range: 0 - 180DEG  
 $\gamma$  Interval: 5.0DEG  
 Test System:EVERFINE GO-2000B\_V1 SYSTEM V2.00.473  
 Humidity:65.0%  
 Test Distance:9.401m [K=1.0000]  
 Remarks:

**UGR(Unified Glare Rating) Table**

Test:U:220.28V I:0.0951A P:20.338W PF:0.9707 Freq:50.00Hz										
Lamp Flux:1996.34x1 lm										
NAME: 明装			TYPE: 0系列				WEIGHT:			
SPEC.:			DIM.:				SERIAL No.:			
MFR.: EVERFINE			SUR.: 1				Shielding Angle:			
ceiling/cavity	0.7	0.7	0.5	0.5	0.3	0.7	0.7	0.5	0.5	0.3
walls	0.5	0.3	0.5	0.3	0.3	0.5	0.3	0.5	0.3	0.3
working plane	0.2	0.2	0.2	0.2	0.2	0.2	0.2	0.2	0.2	0.2
Room dimensions	Viewed crosswise					Viewed endwise				
x = 2H y = 2H	9.0	10.5	9.3	10.8	11.1	8.1	9.6	8.4	9.8	10.1
3H	10.9	12.3	11.2	12.5	12.9	9.5	10.9	9.9	11.2	11.5
4H	11.7	13.0	12.1	13.3	13.7	10.0	11.3	10.4	11.7	12.0
6H	12.4	13.7	12.8	14.0	14.4	10.3	11.6	10.7	11.9	12.2
8H	12.7	13.9	13.1	14.3	14.7	10.3	11.5	10.7	11.9	12.2
12H	13.1	14.3	13.5	14.6	15.0	10.3	11.5	10.7	11.8	12.2
4H 2H	9.6	10.9	9.9	11.2	11.5	8.8	10.2	9.2	10.5	10.8
3H	11.6	12.8	12.0	13.1	13.5	10.5	11.6	10.9	12.0	12.4
4H	12.6	13.7	13.0	14.1	14.5	11.1	12.2	11.5	12.6	13.0
6H	13.5	14.5	14.0	14.9	15.3	11.5	12.5	12.0	12.9	13.3
8H	13.9	14.8	14.4	15.2	15.7	11.6	12.5	12.0	12.9	13.4
12H	14.3	15.2	14.8	15.6	16.1	11.6	12.4	12.1	12.9	13.4
8H 4H	12.8	13.7	13.3	14.2	14.6	11.5	12.4	12.0	12.9	13.3
6H	13.9	14.7	14.4	15.1	15.6	12.1	12.9	12.6	13.3	13.8
8H	14.5	15.1	15.0	15.6	16.1	12.3	12.9	12.8	13.4	13.9
12H	15.1	15.6	15.6	16.2	16.7	12.4	13.0	12.9	13.5	14.0
12H 4H	12.8	13.7	13.3	14.1	14.6	11.6	12.4	12.1	12.9	13.4
6H	14.0	14.6	14.5	15.1	15.7	12.3	12.9	12.8	13.4	13.9
8H	14.6	15.1	15.1	15.6	16.2	12.5	13.0	13.0	13.6	14.1
Variations with the observer position at spacings(CIE Pub.117):										
S = 1.0H	+ 0.1 / - 0.1					+ 0.1 / - 0.2				
1.5H	+ 0.1 / - 0.3					+ 0.2 / - 0.4				
2.0H	+ 0.2 / - 0.2					+ 0.2 / - 0.4				

CIE Pub.117, 1996 lm Total Lamp Luminous Flux Correct (8log(F/F0) = 2.4)  
Area: 1 m2

C Range: 0 - 360DEG  
C Interval: 22.5DEG  
Test Speed: HIGH  
Temperature:25.3°C  
Operators:DAMIN  
Test Date:2023-11-14

γ Range: 0 - 180DEG  
γ Interval: 5.0DEG  
Test System:EVERFINE GO-2000B\_V1 SYSTEM V2.00.473  
Humidity:65.0%  
Test Distance:9.401m [K=1.0000]  
Remarks:

**UTILIZATION FACTORS TABLE**

Test:U:220.28V I:0.0951A P:20.338W PF:0.9707 Freq:50.00Hz Lamp Flux:1996.34x1 lm		
NAME: 明装	TYPE: 0系列	WEIGHT:
SPEC.:	DIM.:	SERIAL No.:
MFR.: EVERFINE	SUR.: 1	Shielding Angle:

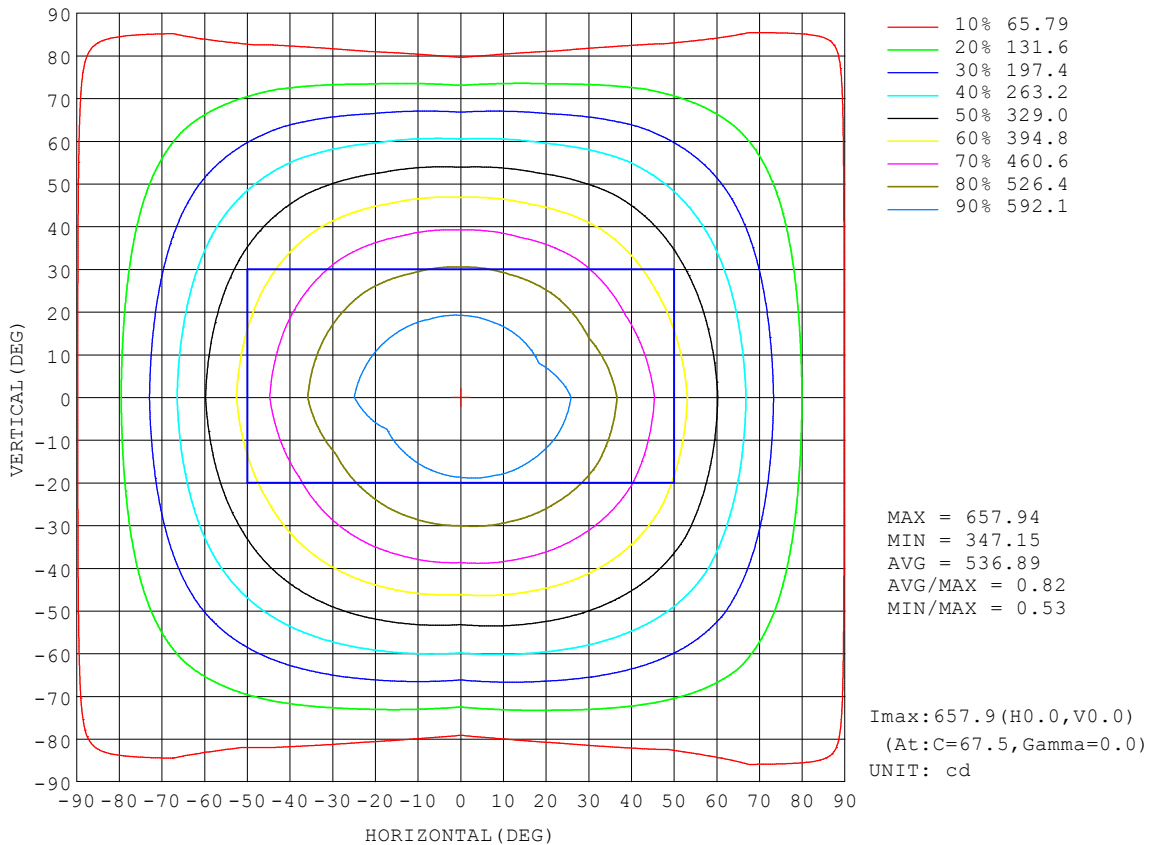
REFLECTANCE										
Ceiling	0.8	0.8	0.8	0.7	0.7	0.7	0.5	0.5	0.5	0
Walls	0.7	0.5	0.3	0.7	0.5	0.3	0.7	0.5	0.3	0
Working plane	0.2	0.2	0.2	0.2	0.2	0.2	0.2	0.2	0.2	0
ROOM INDEX	UTILIZATION FACTORS (PERCENT) $k(RI) \times RCR = 5$									
k = 0.60	55	43	36	54	43	36	53	43	36	29
0.80	65	53	46	64	53	45	62	52	45	38
1.00	73	62	54	72	61	54	69	62	53	46
1.25	80	69	62	79	69	61	76	67	60	53
1.50	85	75	67	84	74	67	80	72	66	58
2.00	92	83	76	90	82	75	86	79	74	65
2.50	96	88	81	94	86	80	90	83	78	69
3.00	100	92	86	97	91	85	93	87	83	73
4.00	104	98	93	101	96	91	97	92	88	78
5.00	107	101	97	104	99	95	99	95	91	81
ROOM INDEX	UF(total)									Direct
According to DIN EN 13032-2 2004			Suspended				SHRNOM = 1.25			

C Range: 0 - 360DEG  
 C Interval: 22.5DEG  
 Test Speed: HIGH  
 Temperature:25.3°C  
 Operators:DAMIN  
 Test Date:2023-11-14

$\gamma$  Range: 0 - 180DEG  
 $\gamma$  Interval: 5.0DEG  
 Test System:EVERFINE GO-2000B\_V1 SYSTEM V2.00.473  
 Humidity:65.0%  
 Test Distance:9.401m [K=1.0000]  
 Remarks:

ISOCANDELA DIAGRAM

Test:U:220.28V I:0.0951A P:20.338W PF:0.9707 Freq:50.00Hz Lamp Flux:1996.34x1 lm		
NAME: 明装	TYPE: 0系列	WEIGHT:
SPEC.:	DIM.:	SERIAL No.:
MFR.: EVERFINE	SUR.: 1	Shielding Angle:



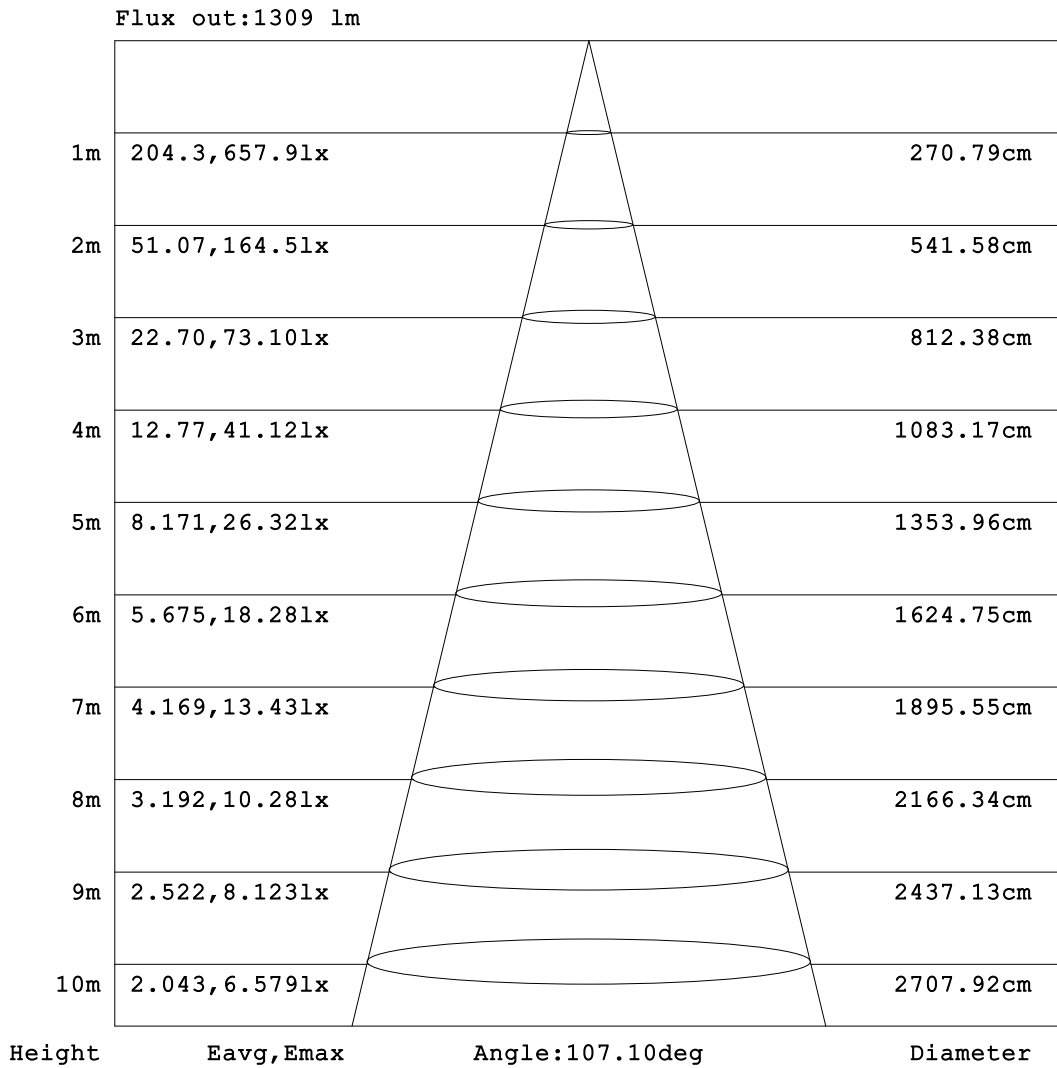
C Range: 0 - 360DEG  
 C Interval: 22.5DEG  
 Test Speed: HIGH  
 Temperature: 25.3°C  
 Operators: DAMIN  
 Test Date: 2023-11-14

γ Range: 0 - 180DEG  
 γ Interval: 5.0DEG  
 Test System: EVERFINE GO-2000B\_V1 SYSTEM V2.00.473  
 Humidity: 65.0%  
 Test Distance: 9.401m [K=1.0000]  
 Remarks:



**AAI Figure**

Test:U:220.28V I:0.0951A P:20.338W PF:0.9707 Freq:50.00Hz Lamp Flux:1996.34x1 lm		
NAME: 明装	TYPE: 0系列	WEIGHT:
SPEC.:	DIM.:	SERIAL No.:
MFR.: EVERFINE	SUR.: 1	Shielding Angle:



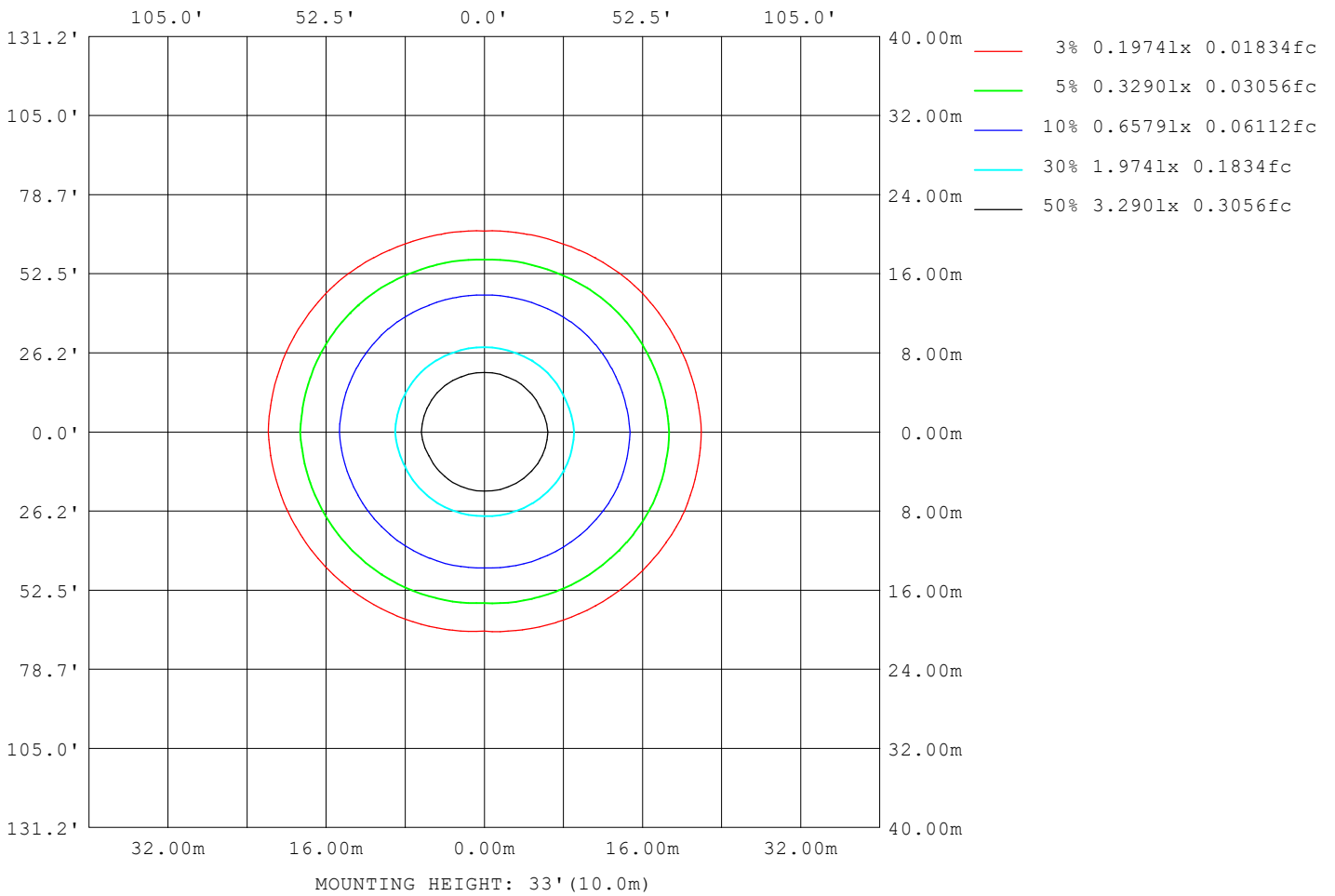
Note: The Curves indicate the illuminated area and the average illumination when the luminaire is at different distance.

C Range: 0 - 360DEG  
C Interval: 22.5DEG  
Test Speed: HIGH  
Temperature: 25.3°C  
Operators: DAMIN  
Test Date: 2023-11-14

γ Range: 0 - 180DEG  
γ Interval: 5.0DEG  
Test System: EVERFINE GO-2000B\_V1 SYSTEM V2.00.473  
Humidity: 65.0%  
Test Distance: 9.401m [K=1.0000]  
Remarks:

**ISOLUX DIAGRAM**

Test:U:220.28V I:0.0951A P:20.338W PF:0.9707 Freq:50.00Hz Lamp Flux:1996.34x1 lm		
NAME: 明装	TYPE: 0系列	WEIGHT:
SPEC.:	DIM.:	SERIAL No.:
MFR.: EVERFINE	SUR.: 1	Shielding Angle:



C Range: 0 - 360DEG  
 C Interval: 22.5DEG  
 Test Speed: HIGH  
 Temperature:25.3°C  
 Operators:DAMIN  
 Test Date:2023-11-14

γ Range: 0 - 180DEG  
 γ Interval: 5.0DEG  
 Test System:EVERFINE GO-2000B\_V1 SYSTEM V2.00.473  
 Humidity:65.0%  
 Test Distance:9.401m [K=1.0000]  
 Remarks:

**LED Avg.L Report**

Test:U:220.28V I:0.0951A P:20.338W PF:0.9707 Freq:50.00Hz Lamp Flux:1996.34x1 lm		
NAME: 明装	TYPE: 0系列	WEIGHT:
SPEC.:	DIM.:	SERIAL No.:
MFR.: EVERFINE	SUR.: 1	Shielding Angle:

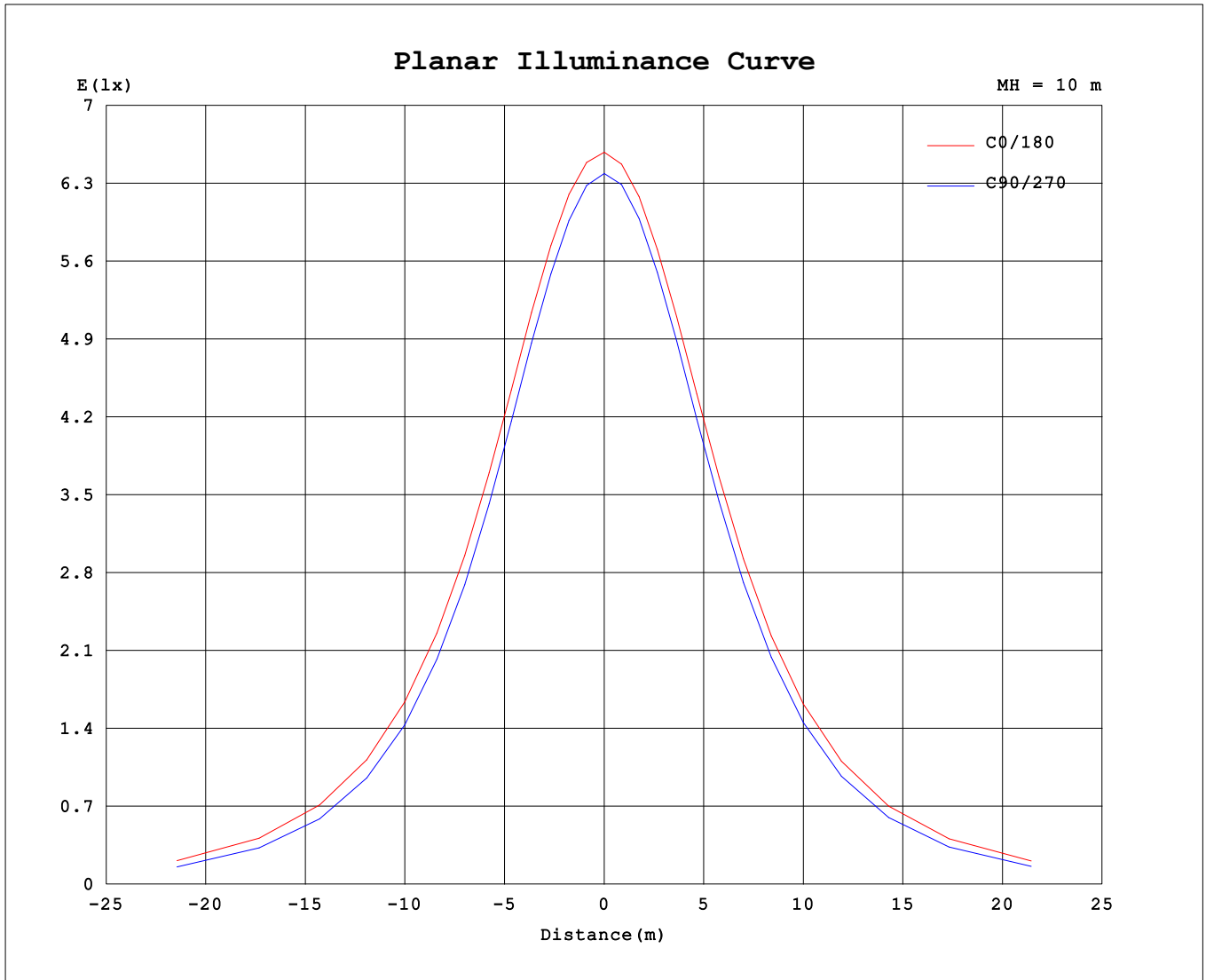
AvgL	cd/m2
L_0~180 (65) av	645
L_0~180 (75) av	670
L_0~180 (85) av	978
L_90~270 (65) av	506
L_90~270 (75) av	421
L_90~270 (85) av	237
L_45 (65) av	592
L_45 (75) av	581
L_45 (85) av	725

Standard: GB/T 29293-2012

C Range: 0 - 360DEG  
 C Interval: 22.5DEG  
 Test Speed: HIGH  
 Temperature:25.3℃  
 Operators:DAMIN  
 Test Date:2023-11-14

γ Range: 0 - 180DEG  
 γ Interval: 5.0DEG  
 Test System:EVERFINE GO-2000B\_V1 SYSTEM V2.00.473  
 Humidity:65.0%  
 Test Distance:9.401m [K=1.0000]  
 Remarks:

**Planar Illuminance Curve**



C Range: 0 - 360DEG  
 C Interval: 22.5DEG  
 Test Speed: HIGH  
 Temperature: 25.3°C  
 Operators: DAMIN  
 Test Date: 2023-11-14

γ Range: 0 - 180DEG  
 γ Interval: 5.0DEG  
 Test System: EVERFINE GO-2000B\_V1 SYSTEM V2.00.473  
 Humidity: 65.0%  
 Test Distance: 9.401m [K=1.0000]  
 Remarks:

LUMINOUS DISTRIBUTION INTENSITY DATA

Test:U:220.28V I:0.0951A P:20.338W PF:0.9707 Freq:50.00Hz Lamp Flux:1996.34x1 lm		
NAME: 明装	TYPE: 0系列	WEIGHT:
SPEC.:	DIM.:	SERIAL No.:
MFR.: EVERFINE	SUR.: 1	Shielding Angle:

Table--1

UNIT: cd

C (DEG) \ γ (DEG)	0	22.5	45	67.5	90	112.5	135	157.5	180	202.5	225	247.5	270	292.5	315	337.5				
0	641	641	641	641	641	641	641	641	641	641	641	641	641	641	641	641				
5	640	640	639	639	638	637	638	638	638	638	638	638	638	638	639	640	640			
10	633	632	631	629	627	627	629	630	631	630	629	628	629	630	632	633				
15	621	620	616	614	611	612	615	617	617	616	615	613	613	614	618	620				
20	604	602	597	592	589	590	594	598	599	598	594	592	591	593	599	602				
25	582	580	571	566	561	564	569	576	577	575	570	565	564	567	575	580				
30	555	553	542	535	529	533	540	547	550	547	542	534	532	536	547	553				
35	524	522	509	500	492	497	507	516	519	516	509	499	496	501	515	522				
40	490	486	472	461	452	458	470	481	484	480	473	461	456	461	478	487				
45	452	449	433	419	407	417	430	443	447	442	433	419	413	420	439	449				
50	411	407	390	375	361	373	387	402	407	401	391	375	367	376	396	408				
55	368	364	345	329	313	327	343	358	363	357	346	328	320	329	351	364				
60	323	318	298	279	263	278	295	313	319	311	299	279	269	280	304	318				
65	275	270	249	229	210	227	246	265	271	264	251	229	217	230	255	270				
70	225	220	199	177	158	176	197	216	221	214	201	178	164	179	205	220				
75	175	170	149	127	106	125	147	166	172	165	151	127	111	128	154	170				
80	128	122	102	78.5	57.8	77.6	100	119	124	118	103	79.3	62.1	80.4	106	123				
85	86.6	80.8	62.4	39.3	19.4	38.9	61.8	79.3	83.8	78.2	63.1	39.9	22.0	40.8	65.4	81.8				
90	63.4	57.8	40.9	18.8	1.11	19.1	41.4	57.9	63.1	57.1	41.6	19.2	1.27	19.2	42.3	58.8				
95	57.3	51.7	33.8	10.5	1.31	11.0	30.2	51.6	57.6	51.0	31.3	11.4	1.40	11.0	35.3	52.1				
100	50.0	38.0	10.4	3.87	1.60	3.69	3.33	28.2	44.5	27.3	3.76	3.68	1.72	4.03	11.0	38.1				
105	30.4	17.0	2.78	4.29	1.91	4.02	2.17	2.39	7.21	2.54	2.28	4.29	2.00	4.64	2.70	16.9				
110	5.50	6.83	9.37	2.98	2.23	3.14	8.35	3.43	3.49	3.83	7.47	2.62	2.35	3.00	8.34	7.08				
115	23.5	22.3	4.74	3.19	2.54	2.81	7.72	16.9	16.6	17.0	7.59	2.74	2.70	3.40	5.06	22.0				
120	28.4	15.7	3.09	4.37	2.89	3.95	3.07	21.3	28.3	20.5	3.25	3.57	3.10	4.07	3.23	14.9				
125	3.43	3.38	3.62	4.66	3.26	4.35	3.55	3.40	8.77	3.62	3.72	4.31	3.43	4.80	3.75	3.58				
130	3.70	3.67	9.07	4.44	3.61	4.20	3.78	3.66	3.93	3.86	4.03	4.28	3.77	4.48	8.78	3.87				
135	4.07	3.95	9.85	4.10	3.95	3.98	9.69	3.90	4.31	4.10	9.85	4.13	4.11	4.24	10.02	4.12				
140	12.4	13.4	8.33	4.27	4.20	4.20	8.11	12.4	4.40	13.0	8.27	4.37	4.38	4.40	7.94	13.2				
145	12.1	10.7	6.77	4.48	4.45	4.43	6.64	10.6	12.4	10.5	6.78	4.57	4.61	4.58	6.53	10.6				
150	9.27	8.33	5.36	4.58	4.64	4.52	5.23	8.23	9.54	8.22	5.31	4.64	4.79	4.66	5.40	8.19				
155	6.90	6.16	4.96	4.84	4.83	4.78	4.95	6.00	7.04	6.00	5.04	4.84	4.96	4.89	5.05	5.98				
160	5.20	5.27	5.32	5.14	5.06	5.02	5.20	5.23	5.32	5.23	5.24	5.06	5.12	5.14	5.36	5.27				
165	5.42	5.54	5.45	5.40	5.31	5.33	5.27	5.42	5.52	5.34	5.29	5.34	5.35	5.38	5.50	5.55				
170	5.46	5.56	5.64	5.66	5.53	5.51	5.49	5.52	5.56	5.53	5.53	5.52	5.54	5.62	5.68	5.55				
175	5.75	5.82	5.81	5.83	5.66	5.67	5.68	5.80	5.84	5.78	5.67	5.66	5.66	5.77	5.84	5.80				
180	5.76	5.81	5.78	5.77	5.75	5.74	5.80	5.79	5.82	5.76	5.81	5.75	5.77	5.72	5.82	5.77				

C Range: 0 - 360DEG  
 C Interval: 22.5DEG  
 Test Speed: HIGH  
 Temperature:25.3℃  
 Operators:DAMIN  
 Test Date:2023-11-14

γ Range: 0 - 180DEG  
 γ Interval: 5.0DEG  
 Test System:EVERFINE GO-2000B\_V1 SYSTEM V2.00.473  
 Humidity:65.0%  
 Test Distance:9.401m [K=1.0000]  
 Remarks: