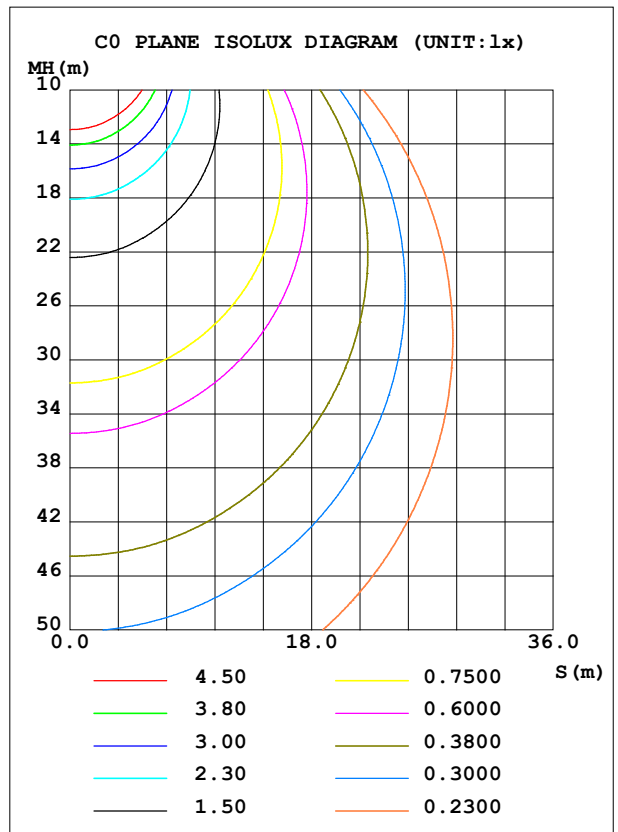
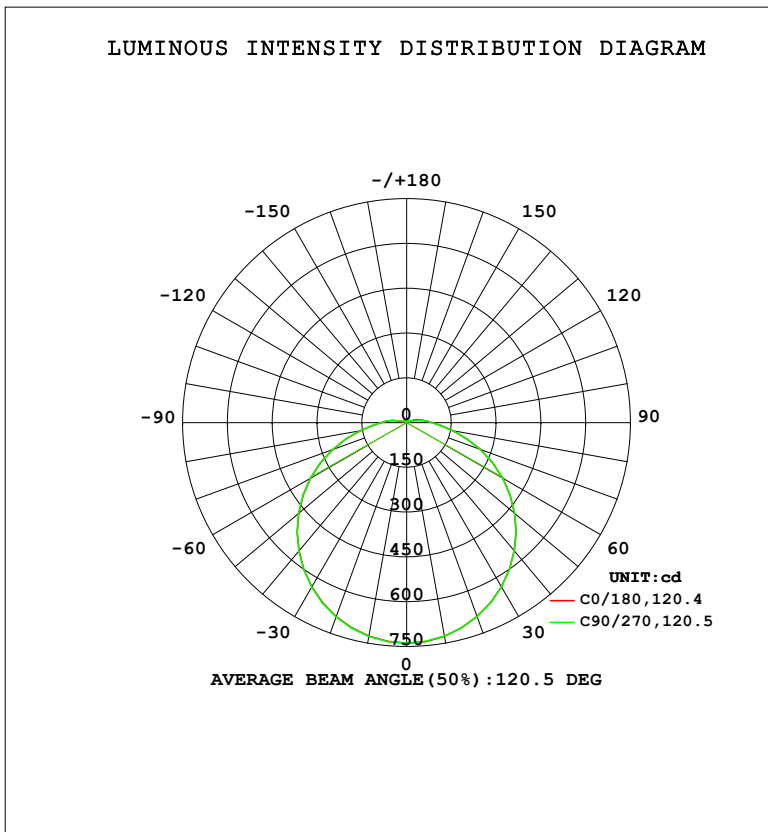


LUMINAIRE PHOTOMETRIC TEST REPORT

Test:U:220.32V I:0.0956A P:20.405W PF:0.9688 Freq:50.00Hz Lamp Flux:2528x1 lm		
NAME: 明装	TYPE:	WEIGHT:
SPEC.:	DIM.:	SERIAL No.:
MFR.: EVERFINE	SUR.: 156.5mm	Shielding Angle:

DATA OF LAMP		PHOTOMETRIC DATA				Eff: 123.89 lm/W
MODEL	O2	I _{max} (cd)	738.6	S/MH (C0/180)	1.28	
NOMINAL POWER (W)	20	LOR (%)	100.0	S/MH (C90/270)	1.28	
RATED VOLTAGE (V)	220	TOTAL FLUX (lm)	2528.0	η UP, DN (C0-180)	2.5, 47.5	
NOMINAL FLUX (lm)	2528	CIE CLASS	DIRECT	η UP, DN (C180-360)	2.5, 47.5	
LAMPS INSIDE	1	η up (%)	5.0	CIBSE SHR NOM	1.50	
TEST VOLTAGE (V)	219.5	η down (%)	95.0	CIBSE SHR MAX	1.50	



C Range: 0 - 360DEG
 C Interval: 22.5DEG
 Test Speed: HIGH
 Temperature: 25.3°C
 Operators: DAMIN
 Test Date: 2023-11-16

γ Range: 0 - 180DEG
 γ Interval: 5.0DEG
 Test System: EVERFINE GO-2000B_V1 SYSTEM V2.00.473
 Humidity: 65.0%
 Test Distance: 9.401m [K=1.0000]
 Remarks:

ZONAL FLUX DIAGRAM

ZONAL FLUX DIAGRAM:

γ	C0	C45	C90	C135	C180	C225	C270	C315	γ	Φ zone	Φ total	%lum,lamp
10	727.2	726.6	726.6	724.4	726.6	726.6	727.1	726.9	0- 10	69.93	69.93	2.77,2.77
20	690.6	691.7	691.7	689.2	691.5	691.4	692.2	692.2	10- 20	201.0	270.9	10.7,10.7
30	635.0	635.8	635.6	633.2	635.5	635.4	636.3	636.7	20- 30	307.2	578.1	22.9,22.9
40	561.3	562.0	561.4	559.1	561.2	561.3	562.2	562.6	30- 40	376.1	954.1	37.7,37.7
50	472.5	472.9	472.7	470.7	472.4	472.4	473.3	473.8	40- 50	400.5	1355	53.6,53.6
60	371.6	371.4	372.0	370.6	371.4	372.0	372.5	373.4	50- 60	379.0	1734	68.6,68.6
70	262.7	263.1	263.2	262.4	263.4	264.0	264.5	265.2	60- 70	315.4	2049	81.1,81.1
80	156.8	158.7	158.6	158.3	157.4	158.0	158.3	159.1	70- 80	221.9	2271	89.8,89.8
90	85.95	85.76	85.91	85.26	85.19	85.54	86.68	86.84	80- 90	129.6	2401	95,95
100	51.56	33.05	44.53	22.56	49.02	21.96	46.67	35.93	90-100	71.56	2472	97.8,97.8
110	25.26	6.096	15.92	5.505	4.142	7.404	15.91	5.633	100-110	24.13	2496	98.7,98.7
120	8.761	10.16	8.332	9.934	9.715	11.07	8.012	10.15	110-120	9.772	2506	99.1,99.1
130	9.613	5.569	9.409	5.644	9.986	6.028	10.44	5.905	120-130	8.684	2515	99.5,99.5
140	5.028	4.929	4.928	4.874	5.288	5.128	5.253	5.106	130-140	4.793	2520	99.7,99.7
150	5.464	5.462	5.566	5.445	5.636	5.565	5.725	5.580	140-150	3.345	2523	99.8,99.8
160	5.983	6.175	6.014	6.077	6.120	6.163	6.087	6.218	150-160	2.682	2526	99.9,99.9
170	6.449	6.595	6.539	6.442	6.544	6.577	6.619	6.577	160-170	1.786	2527	100,100
180	6.756	6.786	6.740	6.783	6.804	6.822	6.758	6.795	170-180	0.6378	2528	100,100
DEG	LUMINOUS INTENSITY:cd									UNIT:lm		

Conical surface Flux(90deg): 1154.2 lm

%lum = 45.7%

%lamp = 45.7%

Conical surface Flux(130deg): 1901.6 lm

%lum = 75.2%

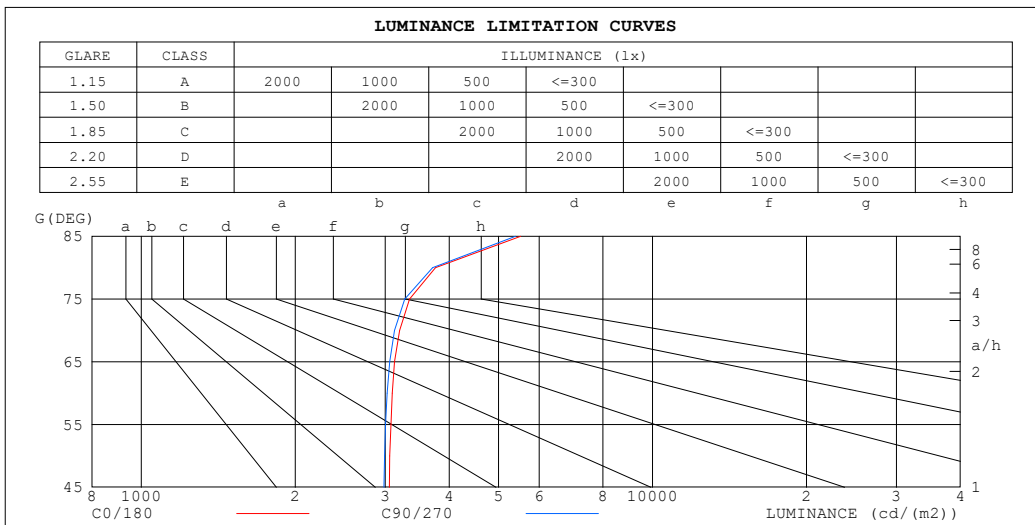
%lamp = 75.2%

C Range: 0 - 360DEG
 C Interval: 22.5DEG
 Test Speed: HIGH
 Temperature:25.3°C
 Operators:DAMIN
 Test Date:2023-11-16

γ Range: 0 - 180DEG
 γ Interval: 5.0DEG
 Test System:EVERFINE GO-2000B_V1 SYSTEM V2.00.473
 Humidity:65.0%
 Test Distance:9.401m [K=1.0000]
 Remarks:

LUMINANCE LIMITATION CURVES

Test:U:220.32V I:0.0956A P:20.405W PF:0.9688 Freq:50.00Hz Lamp Flux:2528x1 lm		
NAME: 明装	TYPE:	WEIGHT:
SPEC.:	DIM.:	SERIAL No.:
MFR.: EVERFINE	SUR.: 156.5mm	Shielding Angle:



LUMINANCE cd/(m2)		
G (DEG)	C0/180	C90/270
85	5516	5391
80	3762	3714
75	3347	3275
70	3199	3129
65	3129	3061
60	3095	3025
55	3076	3003
50	3062	2990
45	3055	2982

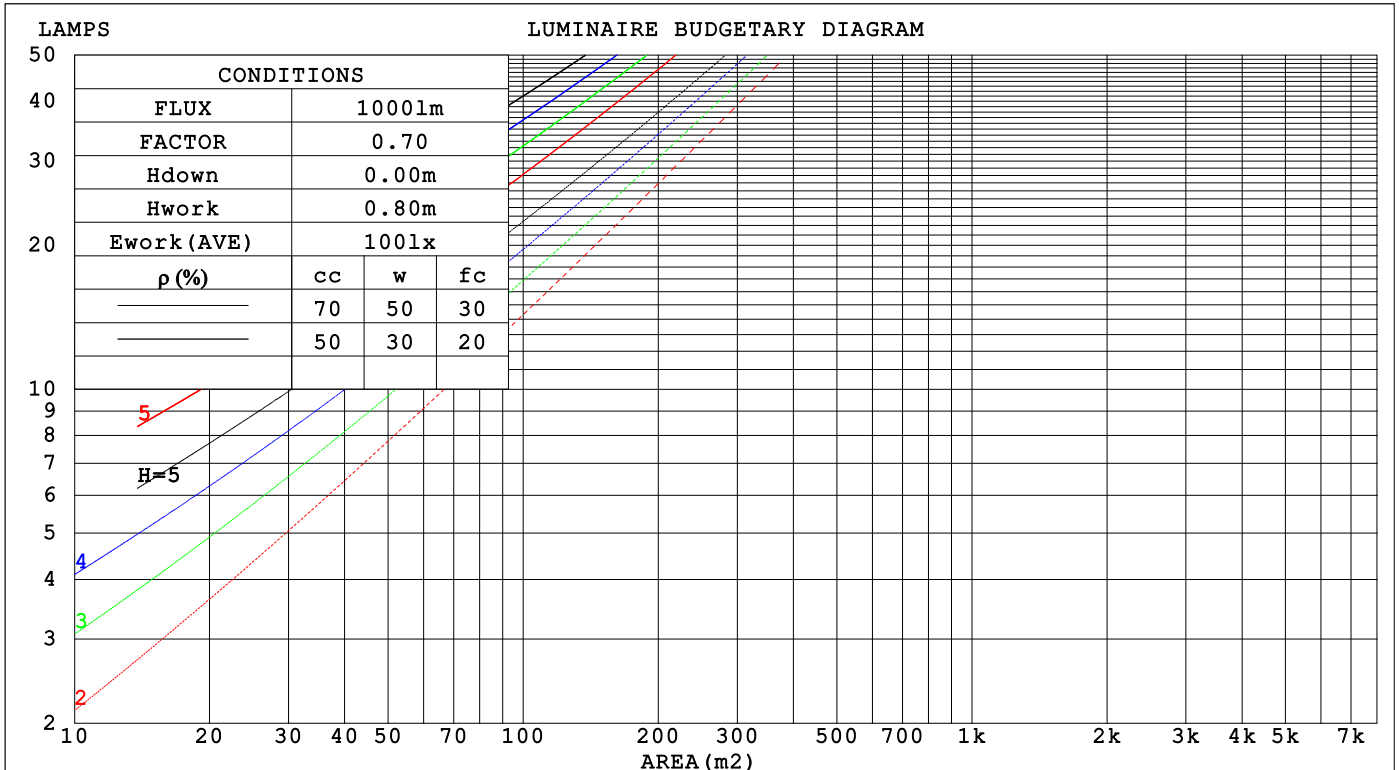
C Range: 0 - 360DEG
 C Interval: 22.5DEG
 Test Speed: HIGH
 Temperature:25.3°C
 Operators:DAMIN
 Test Date:2023-11-16

γ Range: 0 - 180DEG
 γ Interval: 5.0DEG
 Test System:EVERFINE GO-2000B_V1 SYSTEM V2.00.473
 Humidity:65.0%
 Test Distance:9.401m [K=1.0000]
 Remarks:

CU AND LUMINAIRE BUDGETARY ESTIMATE DIAGRAM

Test:U:220.32V I:0.0956A P:20.405W PF:0.9688 Freq:50.00Hz Lamp Flux:2528x1 lm		
NAME: 明装	TYPE:	WEIGHT:
SPEC.:	DIM.:	SERIAL No.:
MFR.: EVERFINE	SUR.: 156.5mm	Shielding Angle:

ρcc	80%			70%			50%			30%			10%			0
ρw	50%	30%	10%	50%	30%	10%	50%	30%	10%	50%	30%	10%	50%	30%	10%	0
ρfc	20%			20%			20%			20%			20%			0
RCR	RCR:Room Cavity Ratio															
	Coefficients of Utilization(CU)															
0.0	1.18	1.18	1.18	1.15	1.15	1.15	1.08	1.08	1.08	1.03	1.03	1.03	.97	.97	.97	.95
1.0	1.00	.95	.91	.97	.93	.89	.92	.89	.85	.87	.84	.82	.83	.81	.78	.76
2.0	.86	.79	.73	.84	.77	.71	.80	.74	.69	.76	.71	.67	.72	.68	.64	.62
3.0	.75	.67	.60	.73	.65	.59	.70	.63	.57	.66	.60	.55	.63	.58	.54	.51
4.0	.66	.57	.50	.65	.56	.49	.62	.54	.48	.59	.52	.47	.56	.50	.46	.43
5.0	.59	.50	.43	.58	.49	.42	.55	.47	.41	.52	.46	.40	.50	.44	.40	.37
6.0	.53	.44	.37	.52	.43	.37	.49	.42	.36	.47	.40	.35	.45	.39	.35	.32
7.0	.48	.39	.33	.47	.38	.32	.45	.37	.32	.43	.36	.31	.41	.35	.31	.28
8.0	.44	.35	.29	.43	.34	.29	.41	.34	.28	.39	.33	.28	.38	.32	.27	.25
9.0	.40	.32	.26	.39	.31	.26	.38	.30	.25	.36	.30	.25	.35	.29	.25	.23
10.0	.37	.29	.23	.36	.28	.23	.35	.28	.23	.34	.27	.23	.32	.26	.22	.20



C Range: 0 - 360DEG
 C Interval: 22.5DEG
 Test Speed: HIGH
 Temperature:25.3°C
 Operators:DAMIN
 Test Date:2023-11-16

γ Range: 0 - 180DEG
 γ Interval: 5.0DEG
 Test System:EVERFINE GO-2000B_V1 SYSTEM V2.00.473
 Humidity:65.0%
 Test Distance:9.401m [K=1.0000]
 Remarks:

WEC AND CCEC

Test:U:220.32V I:0.0956A P:20.405W PF:0.9688 Freq:50.00Hz								
Lamp Flux:2528x1 lm								
NAME: 明装			TYPE:			WEIGHT:		
SPEC.:			DIM.:			SERIAL No.:		
MFR.: EVERFINE			SUR.: 156.5mm			Shielding Angle:		

ρ _{CC}	80%			70%			50%			30%			10%			0
ρ _W	50%	30%	10%	50%	30%	10%	50%	30%	10%	50%	30%	10%	50%	30%	10%	0
ρ _{FC}	20%			20%			20%			20%			20%			0
RCR	RCR:Room Cavity Ratio						Wall Exitance Coefficients (WEC)									
0.0																
1.0	.355	.202	.064	.347	.198	.063	.330	.189	.061	.315	.182	.058	.301	.175	.056	
2.0	.318	.174	.054	.311	.171	.053	.296	.165	.051	.283	.159	.050	.270	.153	.048	
3.0	.288	.153	.046	.281	.150	.045	.268	.145	.044	.256	.140	.043	.245	.135	.042	
4.0	.262	.136	.040	.256	.134	.040	.244	.129	.039	.233	.125	.038	.223	.121	.037	
5.0	.240	.122	.035	.234	.120	.035	.224	.116	.034	.214	.113	.034	.205	.109	.033	
6.0	.221	.111	.032	.216	.109	.031	.206	.106	.031	.197	.103	.030	.189	.100	.030	
7.0	.204	.101	.029	.200	.099	.028	.191	.097	.028	.183	.094	.027	.176	.091	.027	
8.0	.190	.093	.026	.186	.092	.026	.178	.089	.025	.171	.087	.025	.164	.084	.025	
9.0	.177	.086	.024	.174	.085	.024	.167	.082	.023	.160	.080	.023	.154	.078	.023	
10.0	.166	.080	.022	.163	.079	.022	.157	.077	.022	.151	.075	.021	.145	.073	.021	

ρ _{CC}	80%			70%			50%			30%			10%			0
ρ _W	50%	30%	10%	50%	30%	10%	50%	30%	10%	50%	30%	10%	50%	30%	10%	0
ρ _{FC}	20%			20%			20%			20%			20%			0
RCR	RCR:Room Cavity Ratio						Ceiling Cavity Exitance Coefficients (CCEC)									
0.0	.229	.229	.229	.196	.196	.196	.134	.134	.134	.077	.077	.077	.025	.025	.025	
1.0	.222	.194	.169	.190	.167	.146	.130	.115	.101	.075	.066	.059	.024	.021	.019	
2.0	.215	.171	.134	.184	.147	.116	.126	.102	.081	.073	.059	.047	.023	.019	.015	
3.0	.207	.154	.111	.178	.133	.096	.122	.092	.067	.070	.054	.040	.023	.017	.013	
4.0	.199	.141	.096	.171	.122	.083	.118	.085	.059	.068	.050	.035	.022	.016	.011	
5.0	.192	.130	.085	.165	.113	.074	.113	.079	.052	.066	.046	.031	.021	.015	.010	
6.0	.184	.122	.078	.158	.106	.068	.109	.074	.048	.063	.044	.028	.020	.014	.009	
7.0	.177	.115	.072	.152	.100	.063	.105	.070	.045	.061	.041	.027	.020	.014	.009	
8.0	.170	.110	.068	.147	.095	.059	.102	.067	.042	.059	.039	.025	.019	.013	.008	
9.0	.164	.105	.065	.141	.091	.056	.098	.064	.040	.057	.038	.024	.018	.012	.008	
10.0	.158	.101	.062	.137	.087	.054	.095	.061	.038	.055	.036	.023	.018	.012	.008	

C Range: 0 - 360DEG
 C Interval: 22.5DEG
 Test Speed: HIGH
 Temperature:25.3°C
 Operators:DAMIN
 Test Date:2023-11-16

γ Range: 0 - 180DEG
 γ Interval: 5.0DEG
 Test System:EVERFINE GO-2000B_V1 SYSTEM V2.00.473
 Humidity:65.0%
 Test Distance:9.401m [K=1.0000]
 Remarks:

UGR(Unified Glare Rating) Table

Test:U:220.32V I:0.0956A P:20.405W PF:0.9688 Freq:50.00Hz										
Lamp Flux:2528x1 lm										
NAME: 明装			TYPE:				WEIGHT:			
SPEC.:			DIM.:				SERIAL No.:			
MFR.: EVERFINE			SUR.: 156.5mm				Shielding Angle:			
ceiling/cavity	0.7	0.7	0.5	0.5	0.3	0.7	0.7	0.5	0.5	0.3
walls	0.5	0.3	0.5	0.3	0.3	0.5	0.3	0.5	0.3	0.3
working plane	0.2	0.2	0.2	0.2	0.2	0.2	0.2	0.2	0.2	0.2
Room dimensions	Viewed crosswise					Viewed endwise				
x = 2H y = 2H	13.3	14.8	13.6	15.1	15.4	13.2	14.7	13.5	15.0	15.3
3H	15.2	16.6	15.5	16.9	17.2	15.1	16.5	15.4	16.8	17.1
4H	16.0	17.4	16.4	17.7	18.1	15.9	17.3	16.3	17.6	18.0
6H	16.8	18.1	17.2	18.5	18.9	16.7	18.0	17.1	18.4	18.8
8H	17.2	18.4	17.6	18.8	19.2	17.1	18.3	17.5	18.7	19.1
12H	17.7	18.8	18.1	19.2	19.6	17.5	18.7	18.0	19.1	19.5
4H 2H	14.0	15.3	14.4	15.6	16.0	13.9	15.2	14.3	15.6	15.9
3H	16.0	17.2	16.5	17.6	18.0	15.9	17.1	16.4	17.5	17.9
4H	17.0	18.1	17.5	18.5	19.0	17.0	18.0	17.4	18.5	18.9
6H	18.0	19.0	18.5	19.4	19.9	17.9	18.9	18.4	19.4	19.8
8H	18.5	19.4	19.0	19.9	20.4	18.4	19.3	18.9	19.8	20.3
12H	19.0	19.9	19.6	20.4	20.9	18.9	19.8	19.5	20.3	20.8
8H 4H	17.4	18.3	17.9	18.8	19.3	17.4	18.3	17.9	18.7	19.2
6H	18.6	19.4	19.2	19.9	20.4	18.6	19.3	19.1	19.8	20.4
8H	19.3	19.9	19.8	20.5	21.0	19.2	19.9	19.7	20.4	20.9
12H	20.0	20.6	20.6	21.1	21.7	19.9	20.5	20.5	21.0	21.6
12H 4H	17.5	18.3	18.0	18.8	19.3	17.4	18.3	17.9	18.7	19.2
6H	18.8	19.5	19.3	20.0	20.5	18.7	19.4	19.2	19.9	20.5
8H	19.5	20.1	20.1	20.6	21.2	19.4	20.0	20.0	20.5	21.1
Variations with the observer position at spacings(CIE Pub.117):										
S = 1.0H	+ 0.1 / - 0.1					+ 0.1 / - 0.1				
1.5H	+ 0.2 / - 0.3					+ 0.2 / - 0.3				
2.0H	+ 0.2 / - 0.3					+ 0.2 / - 0.3				

CIE Pub.117, 2528 lm Total Lamp Luminous Flux Correct (8log(F/F0) = 3.2)
 Area: 0.245 m2

C Range: 0 - 360DEG
 C Interval: 22.5DEG
 Test Speed: HIGH
 Temperature:25.3°C
 Operators:DAMIN
 Test Date:2023-11-16

γ Range: 0 - 180DEG
 γ Interval: 5.0DEG
 Test System:EVERFINE GO-2000B_V1 SYSTEM V2.00.473
 Humidity:65.0%
 Test Distance:9.401m [K=1.0000]
 Remarks:

UTILIZATION FACTORS TABLE

Test:U:220.32V I:0.0956A P:20.405W PF:0.9688 Freq:50.00Hz Lamp Flux:2528x1 lm		
NAME: 明装	TYPE:	WEIGHT:
SPEC.:	DIM.:	SERIAL No.:
MFR.: EVERFINE	SUR.: 156.5mm	Shielding Angle:

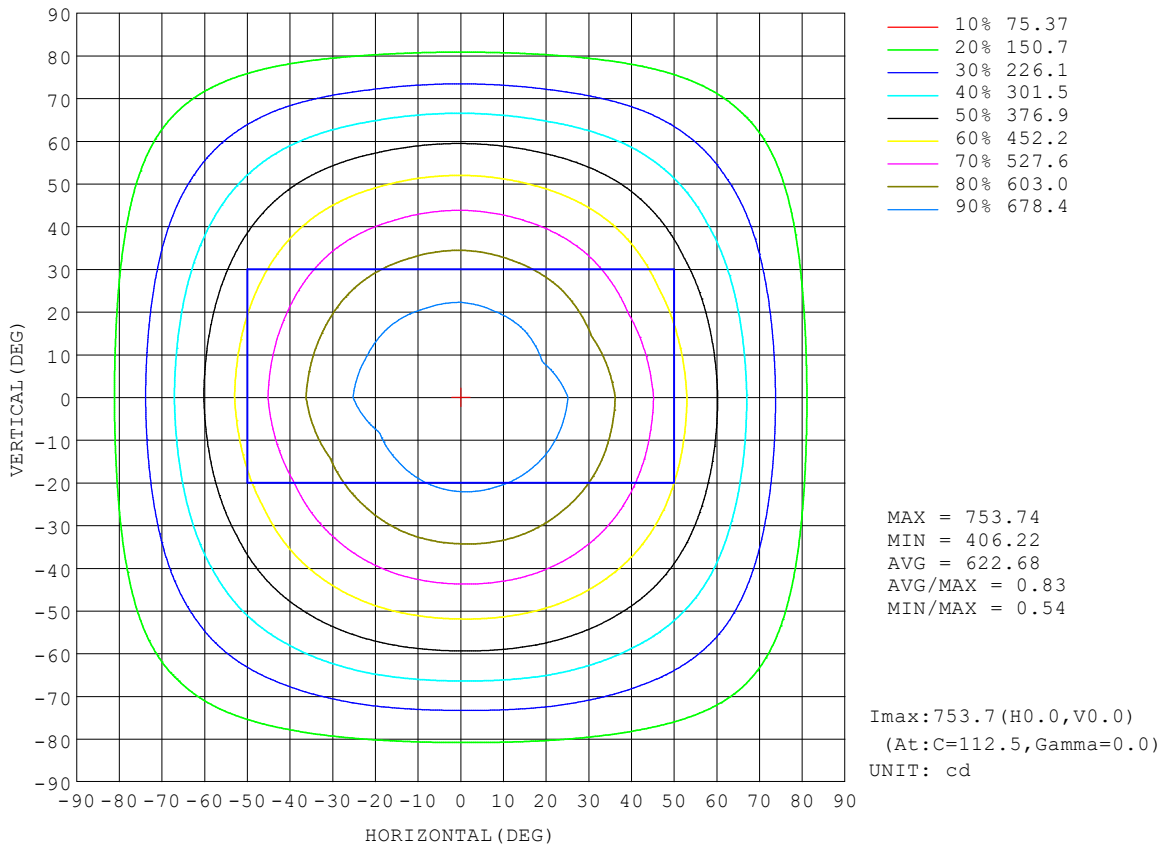
REFLECTANCE										
Ceiling	0.8	0.8	0.8	0.7	0.7	0.7	0.5	0.5	0.5	0
Walls	0.7	0.5	0.3	0.7	0.5	0.3	0.7	0.5	0.3	0
Working plane	0.2	0.2	0.2	0.2	0.2	0.2	0.2	0.2	0.2	0
ROOM INDEX	UTILIZATION FACTORS (PERCENT) $k(RI) \times RCR = 5$									
k = 0.60	53	41	34	53	41	34	51	40	34	27
0.80	63	51	43	62	50	43	60	49	42	35
1.00	71	59	51	70	58	51	67	60	50	43
1.25	78	67	59	76	66	58	73	64	57	49
1.50	83	72	64	81	71	64	78	69	62	54
2.00	90	80	73	88	79	72	84	76	70	61
2.50	94	85	78	92	84	77	88	81	75	66
3.00	98	90	83	95	88	82	91	85	80	70
4.00	102	96	90	100	93	88	95	89	85	75
5.00	105	99	94	102	97	92	97	93	89	78
ROOM INDEX	UF(total)									Direct
According to DIN EN 13032-2 2004			Suspended				SHRNOM = 1.25			

C Range: 0 - 360DEG
 C Interval: 22.5DEG
 Test Speed: HIGH
 Temperature:25.3°C
 Operators:DAMIN
 Test Date:2023-11-16

γ Range: 0 - 180DEG
 γ Interval: 5.0DEG
 Test System:EVERFINE GO-2000B_V1 SYSTEM V2.00.473
 Humidity:65.0%
 Test Distance:9.401m [K=1.0000]
 Remarks:

ISOCANDELA DIAGRAM

Test:U:220.32V I:0.0956A P:20.405W PF:0.9688 Freq:50.00Hz Lamp Flux:2528x1 lm		
NAME: 明装	TYPE:	WEIGHT:
SPEC.:	DIM.:	SERIAL No.:
MFR.: EVERFINE	SUR.: 156.5mm	Shielding Angle:

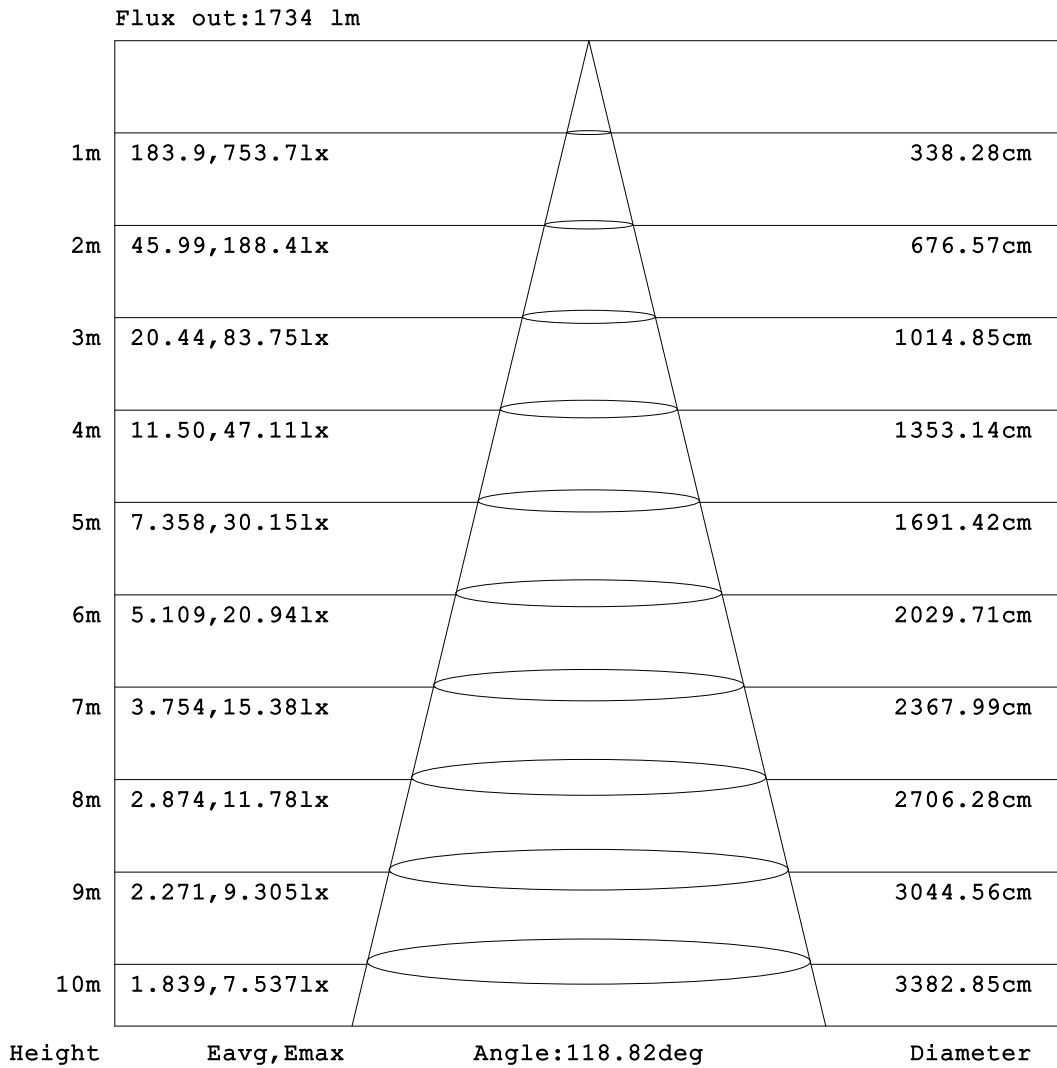


C Range: 0 - 360DEG
 C Interval: 22.5DEG
 Test Speed: HIGH
 Temperature: 25.3°C
 Operators: DAMIN
 Test Date: 2023-11-16

γ Range: 0 - 180DEG
 γ Interval: 5.0DEG
 Test System: EVERFINE GO-2000B_V1 SYSTEM V2.00.473
 Humidity: 65.0%
 Test Distance: 9.401m [K=1.0000]
 Remarks:

AAI Figure

Test:U:220.32V I:0.0956A P:20.405W PF:0.9688 Freq:50.00Hz Lamp Flux:2528x1 lm		
NAME: 明装	TYPE:	WEIGHT:
SPEC.:	DIM.:	SERIAL No.:
MFR.: EVERFINE	SUR.: 156.5mm	Shielding Angle:



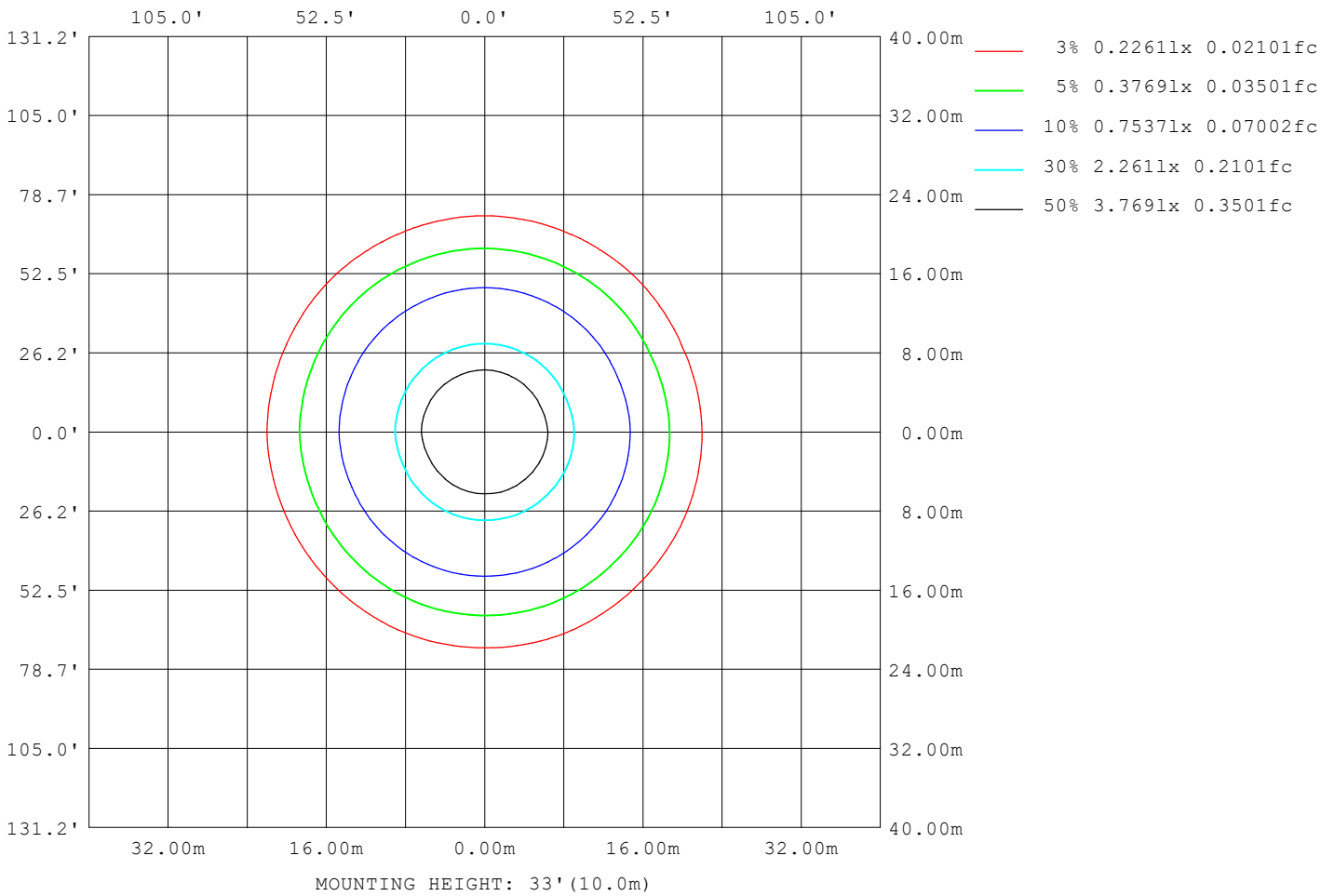
Note: The Curves indicate the illuminated area and the average illumination when the luminaire is at different distance.

C Range: 0 - 360DEG
 C Interval: 22.5DEG
 Test Speed: HIGH
 Temperature: 25.3°C
 Operators: DAMIN
 Test Date: 2023-11-16

γ Range: 0 - 180DEG
 γ Interval: 5.0DEG
 Test System: EVERFINE GO-2000B_V1 SYSTEM V2.00.473
 Humidity: 65.0%
 Test Distance: 9.401m [K=1.0000]
 Remarks:

ISOLUX DIAGRAM

Test:U:220.32V I:0.0956A P:20.405W PF:0.9688 Freq:50.00Hz Lamp Flux:2528x1 lm		
NAME: 明装	TYPE:	WEIGHT:
SPEC.:	DIM.:	SERIAL No.:
MFR.: EVERFINE	SUR.: 156.5mm	Shielding Angle:



C Range: 0 - 360DEG
C Interval: 22.5DEG
Test Speed: HIGH
Temperature:25.3°C
Operators:DAMIN
Test Date:2023-11-16

γ Range: 0 - 180DEG
γ Interval: 5.0DEG
Test System:EVERFINE GO-2000B_V1 SYSTEM V2.00.473
Humidity:65.0%
Test Distance:9.401m [K=1.0000]
Remarks:

LED Avg.L Report

Test:U:220.32V I:0.0956A P:20.405W PF:0.9688 Freq:50.00Hz Lamp Flux:2528x1 lm		
NAME: 明装	TYPE:	WEIGHT:
SPEC.:	DIM.:	SERIAL No.:
MFR.: EVERFINE	SUR.: 156.5mm	Shielding Angle:

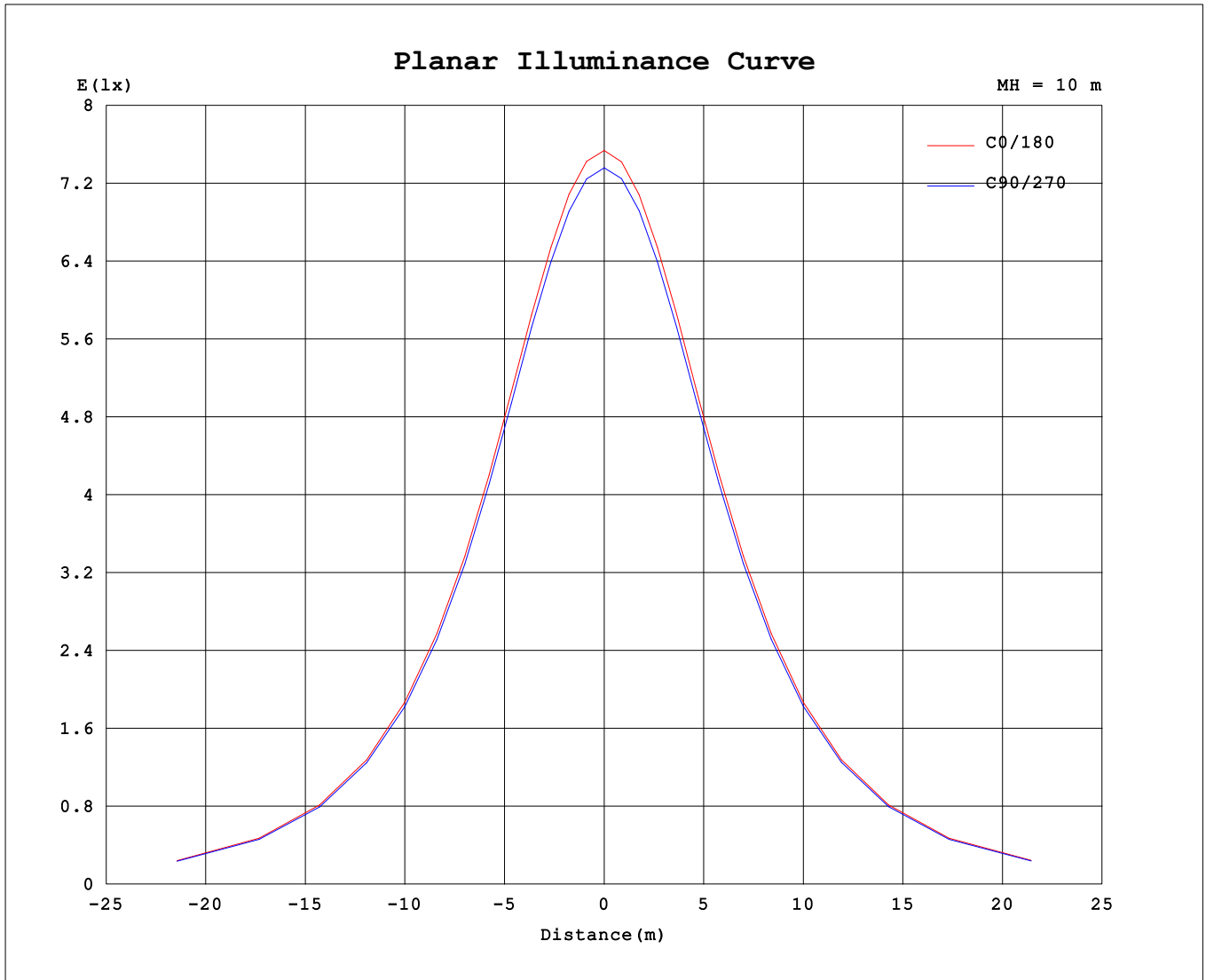
AvgL	cd/m2
L_0~180 (65) av	3070
L_0~180 (75) av	3287
L_0~180 (85) av	5392
L_90~270 (65) av	3079
L_90~270 (75) av	3298
L_90~270 (85) av	5421
L_45 (65) av	3075
L_45 (75) av	3297
L_45 (85) av	5416

Standard: GB/T 29293-2012

C Range: 0 - 360DEG
 C Interval: 22.5DEG
 Test Speed: HIGH
 Temperature:25.3°C
 Operators:DAMIN
 Test Date:2023-11-16

γ Range: 0 - 180DEG
 γ Interval: 5.0DEG
 Test System:EVERFINE GO-2000B_V1 SYSTEM V2.00.473
 Humidity:65.0%
 Test Distance:9.401m [K=1.0000]
 Remarks:

Planar Illuminance Curve



C Range: 0 - 360DEG
 C Interval: 22.5DEG
 Test Speed: HIGH
 Temperature: 25.3°C
 Operators: DAMIN
 Test Date: 2023-11-16

γ Range: 0 - 180DEG
 γ Interval: 5.0DEG
 Test System: EVERFINE GO-2000B_V1 SYSTEM V2.00.473
 Humidity: 65.0%
 Test Distance: 9.401m [K=1.0000]
 Remarks:

LUMINOUS DISTRIBUTION INTENSITY DATA

Test:U:220.32V I:0.0956A P:20.405W PF:0.9688 Freq:50.00Hz Lamp Flux:2528x1 lm		
NAME: 明装	TYPE:	WEIGHT:
SPEC.:	DIM.:	SERIAL No.:
MFR.: EVERFINE	SUR.: 156.5mm	Shielding Angle:

Table--1

UNIT: cd

C (DEG) \ γ (DEG)	0	22.5	45	67.5	90	112.5	135	157.5	180	202.5	225	247.5	270	292.5	315	337.5			
0	739	739	739	739	739	739	739	739	739	739	739	739	739	739	739	739			
5	736	737	735	736	736	736	734	736	736	735	735	735	736	736	736	736			
10	727	727	727	727	727	727	724	727	727	727	727	726	727	727	727	727			
15	711	713	712	712	712	712	710	712	712	712	712	712	712	712	712	712			
20	691	693	692	692	692	692	689	691	691	691	691	691	692	692	692	692			
25	665	667	666	667	666	666	664	666	666	666	666	666	667	666	667	666			
30	635	638	636	638	636	636	633	636	636	635	635	635	636	636	637	636			
35	600	603	601	603	600	601	598	601	601	600	600	600	601	601	602	601			
40	561	564	562	564	561	562	559	562	561	560	561	561	562	562	563	562			
45	519	520	519	521	519	519	517	519	518	518	518	518	519	519	520	519			
50	473	474	473	475	473	474	471	473	472	472	472	472	473	473	474	473			
55	424	426	423	426	424	424	422	424	423	423	423	423	424	424	425	424			
60	372	374	371	374	372	373	371	372	371	371	372	371	373	372	373	372			
65	317	321	318	321	318	320	317	319	318	317	319	317	320	318	320	318			
70	263	266	263	266	263	265	262	264	263	262	264	262	264	263	265	263			
75	208	211	208	211	208	211	208	210	209	207	209	208	210	209	210	208			
80	157	159	159	159	159	159	158	158	157	157	158	158	158	159	159	158			
85	115	116	116	117	116	116	115	116	115	114	115	115	116	116	116	115			
90	85.9	86.7	85.8	86.6	85.9	86.4	85.3	85.5	85.2	84.8	85.5	85.7	86.7	86.6	86.8	86.1			
95	68.7	68.5	67.7	68.2	68.3	67.7	65.3	67.0	67.4	65.8	66.5	67.8	69.2	68.7	68.9	68.5			
100	51.6	51.6	33.1	39.9	44.5	38.6	22.6	42.3	49.0	40.4	22.0	40.6	46.7	39.8	35.9	52.3			
105	37.6	28.1	13.3	19.0	21.6	18.0	9.24	11.6	22.6	10.1	9.71	19.7	23.0	18.9	14.2	29.4			
110	25.3	15.2	6.10	14.8	15.9	14.7	5.51	6.17	4.14	7.37	7.40	14.9	15.9	15.1	5.63	16.1			
115	9.11	5.62	11.9	8.57	10.00	8.37	12.6	5.43	8.11	5.75	11.9	9.45	11.0	8.98	11.6	5.87			
120	8.76	7.10	10.2	10.9	8.33	11.4	9.93	7.38	9.72	7.85	11.1	11.0	8.01	11.5	10.2	7.28			
125	14.2	9.06	7.11	11.8	13.7	11.5	6.99	9.42	14.6	8.85	7.67	12.7	14.2	12.3	7.28	9.48			
130	9.61	7.80	5.57	7.90	9.41	7.80	5.64	8.12	9.99	7.08	6.03	8.73	10.4	8.43	5.90	7.57			
135	6.13	5.94	4.76	5.56	6.34	5.53	4.82	6.17	6.50	5.97	5.00	6.14	7.18	6.01	5.03	6.18			
140	5.03	5.09	4.93	4.92	4.93	4.91	4.87	5.20	5.29	5.26	5.13	5.08	5.25	5.12	5.11	5.40			
145	5.30	5.30	5.18	5.23	5.23	5.28	5.15	5.34	5.53	5.45	5.36	5.40	5.40	5.49	5.32	5.52			
150	5.46	5.47	5.46	5.45	5.57	5.54	5.45	5.45	5.64	5.57	5.56	5.55	5.72	5.74	5.58	5.59			
155	5.80	5.76	5.77	5.77	5.79	5.70	5.73	5.73	5.97	5.82	5.83	5.78	5.90	5.81	5.84	5.84			
160	5.98	6.02	6.17	6.03	6.01	5.99	6.08	5.99	6.12	6.10	6.16	6.00	6.09	6.09	6.22	6.08			
165	6.27	6.35	6.40	6.36	6.27	6.25	6.24	6.30	6.37	6.36	6.37	6.29	6.32	6.32	6.42	6.39			
170	6.45	6.50	6.59	6.59	6.54	6.55	6.44	6.46	6.54	6.61	6.58	6.56	6.62	6.63	6.58	6.50			
175	6.73	6.79	6.77	6.80	6.70	6.72	6.72	6.77	6.78	6.77	6.71	6.69	6.74	6.83	6.84	6.79			
180	6.76	6.80	6.79	6.77	6.74	6.78	6.78	6.78	6.80	6.75	6.82	6.75	6.76	6.76	6.80	6.77			

C Range: 0 - 360DEG
 C Interval: 22.5DEG
 Test Speed: HIGH
 Temperature:25.3℃
 Operators:DAMIN
 Test Date:2023-11-16

γ Range: 0 - 180DEG
 γ Interval: 5.0DEG
 Test System:EVERFINE GO-2000B_V1 SYSTEM V2.00.473
 Humidity:65.0%
 Test Distance:9.401m [K=1.0000]
 Remarks: