

PRODUCT DATASHEET

Black lamp cup, enhanced anti-glare, Led spot light
HYD-342AS-10W 3K/4K/6K



Application

- Home
- Restaurant
- Exhibition Hall
- Stage
- Conference Room
- Clothing Store

Benefits

- Flicker free
- It can be used for emphasis lighting and decorative lighting
- Spot light have prominent advantages in commercial lighting
- No secondary light spot, it can create a wall washing effect

Features

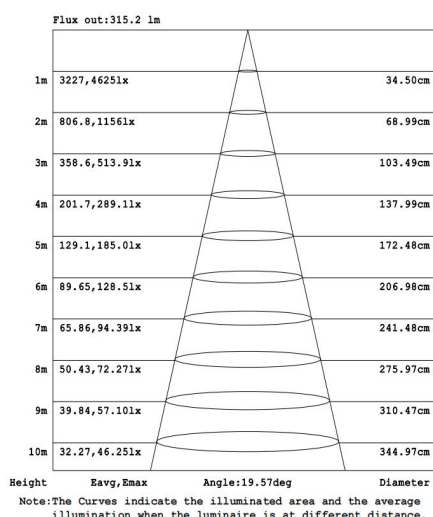
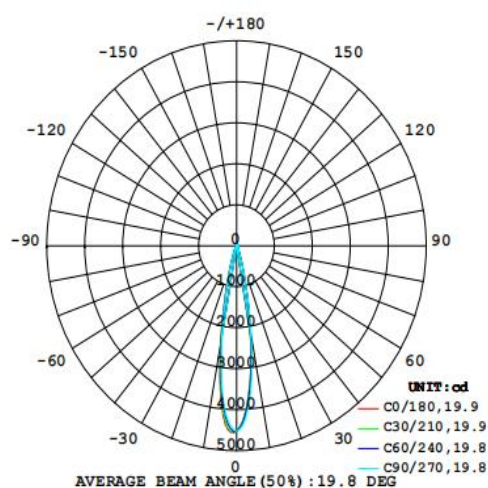
- Warranty 5 years
- PC, Good light transmission
- Small size, light weight, buckle design, easy to install
- Die-cast aluminum, good heat dissipation, reduce light decay

Electrical Data

Nominal wattage (W)	10W
Nominal Voltage (V)	220-240 V
Mains Frequency (Hz)	50
Nominal Current (mA)	100
LED Driver Current (mA)	300
LED Driver Voltage (VDC)	24-43
LED Driver Efficiency (%)	...
Power Factor λ	0.5
Total harmonic distortion (%)	...
Operating mode	External LED driver

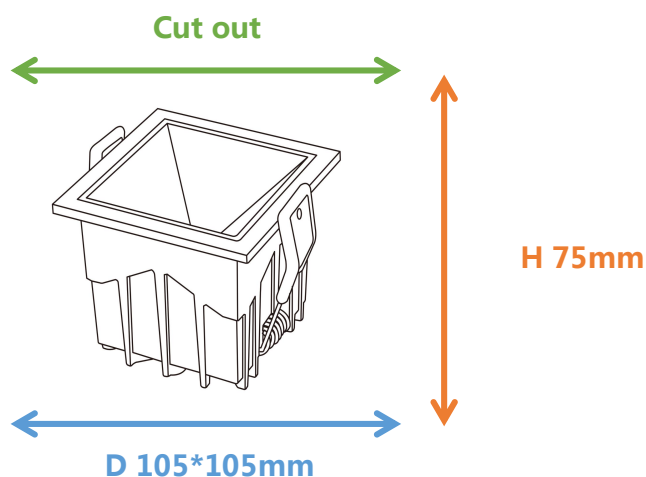
Photometrical data

Luminous flux $\pm 10\%$ (lm)	575.1	639	710
Luminous efficacy (lm/w)	59.13	65.7	73
Color temperature	3000K	4000K	6000K
Light color (designation)	Warm White	Nature White	Cold White
Color rendering index Ra	≥ 80		
Standard deviation of color matching	≤ 5 SDCM		
UGR	<19		
Luminous intensity/cd	4561		
Flickering	Flicker free		
Beam angle	20 °		


IES

Dimensions & Weight

Diameter (mm)	105*105
Height (mm)	75
Product weight (g)	487



Material & Colors

Product color	Black Lamp cup / Black Housing
Housing color	Black
Body material	Aluminum
Cover material	PC
Mercury content	0.0 mg

Application & Mounting

Ambient temperature range	-10°C~+40 °C
Temperature range at storage	-10°C~+40 °C
Type of connection	Screwless terminal
Type of protection	IP20
Dimmable	No
Mounting type	Recessed
Mounting location	Ceiling
Application environment	Indoor
Cut size (mm)	95*95
LED module replaceable	Not replaceable
With light source	Yes

Certificates & Lifespan

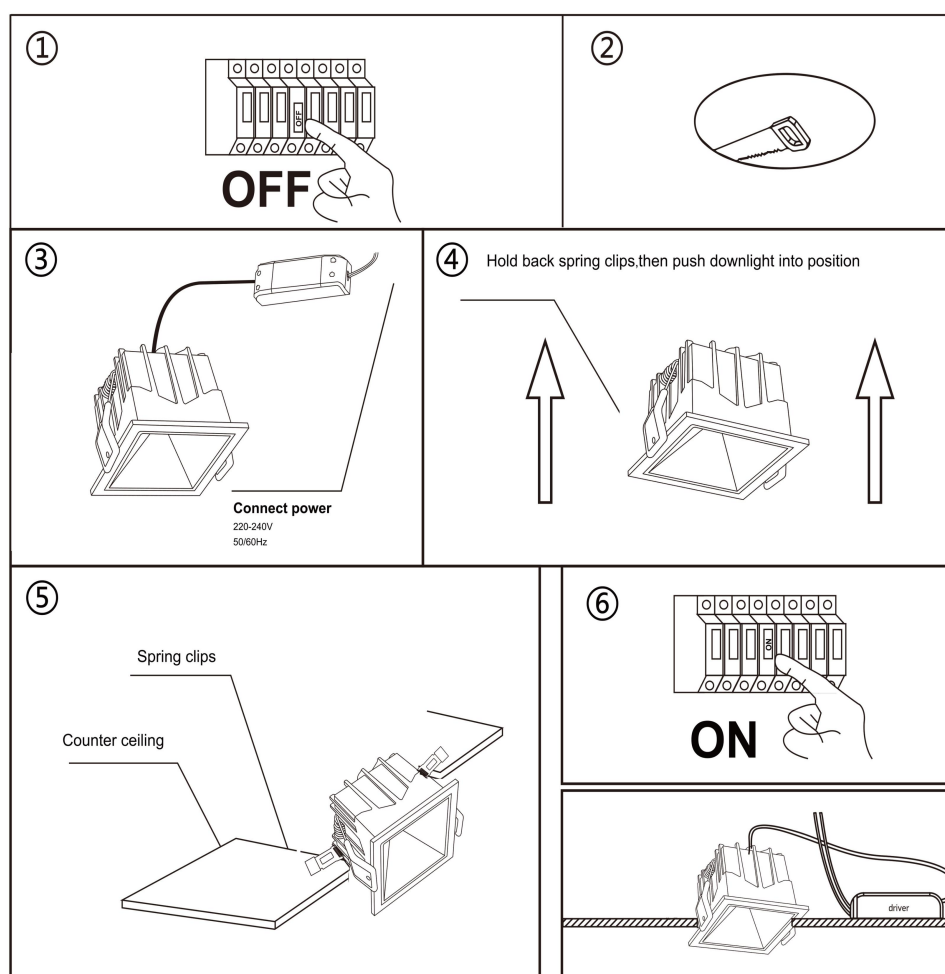
Life (h)	50,000
Certificates	CB CE LVD EMC
Standards	ISO9001:2015

Logistical Data

Product code	Dimensions (L*W*H)	Pcs/ carton	G.W. kg	Volume CBM
HYD-342AS-10W

This is the estimated data. Subject to the actual shipment.

Installation Method



Disclaimer

Subject to change without notice. Errors and omission excepted. Always make sure to use the most recent release.