

PRODUCT DATASHEET

PANEL LIGHT | HYD-104B 60W Ra>80

High light transmission mask, uniform light output

HYD-104B



Areas of application

- Indoor illumination
- Suitable place: Office space;
Commercial space; hospital; school
- Create a comfortable and healthy
visual environment

Product benefits

- Matte texture,Elegant and atmospheric,Enhance the beauty of space
- Efficient and durable, energy saving and environmental protection
- The light is soft and bright, no stroboscopic, creating a comfortable visual environment

Product features

- Light body thin design, reduce space occupancy
- Rust prevention, corrosion resistance
- High light transmission mask to ensure uniform light, reduce the dark area of the lighting environment

TECHNICAL DATA

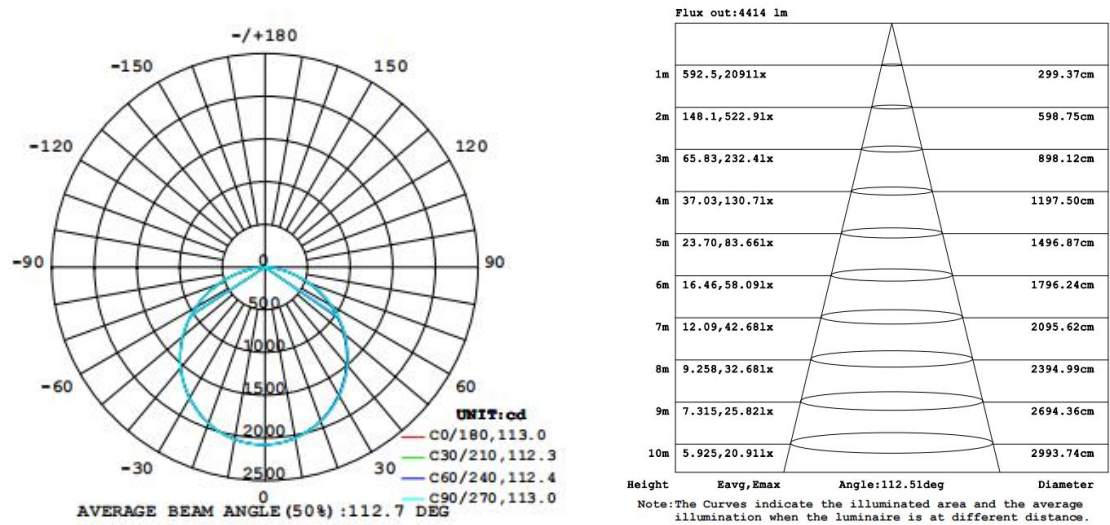
Electrical data

Nominal wattage	60 W
Nominal voltage	220 - 240 V
Mains frequency	50/60 Hz
Nominal Current	265 mA
LED Driver Current	1400 mA
LED Driver Output Voltage	24-42 V
LED Driver Efficiency	88%@220-240Vac(full load)
Inrush current	0.4A Max.
I park	45.8A
T width	222 μ s
Max.no.of lum.on circuit break.B16 A	12 pcs
Max.no.of lum.on circuit break.C10 A	13 pcs
Max.no.of lum.on circuit break.C16 A	21 pcs
Power factor λ	0.85C-0.95
Total harmonic distortion	<10%@220-240Vac(full load)
Protection class	Class II
Operating mode	External LED driver

Photometrical data

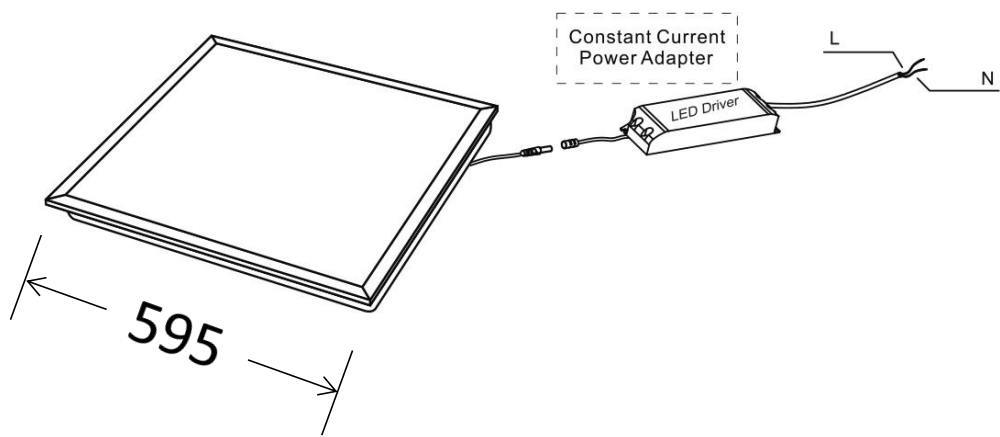
Luminous flux	5941 lm
Luminous efficacy	105 lm/w
Color temperature	3K/4K/6K
Light color (designation)	Cold white
Color rendering index Ra	>80
Standard deviation of color matching	<5
Luminous intensity/cd	2078
Low flicker	Yes
Beam angle	113 °
UGR	<19

104B-60W-IES-6.5K



Dimensions & Weight D

Diameter	595×595 mm
Height	30 mm
Product weight	-



Materials & Colors

Product color	White
Housing color	White
Body material	Aluminum
Cover material	PS
Light emitting surface material	PC
Mercury content	0.0mg

Application & Mounting

Ambient temperature range	-20 - +45°C
Temperature range at storage	-25 - +60°C
Type of connection	Screw terminal
Type of protection	IP20
Protection class IK (shock resistance)	-
Dimmable	No
Mounting type	Recessed
Mounting location	Ceiling / Wall
Application environment	Indoor
Mounting diameter	595×595 mm
Cut out	-
LED module replaceable	Non-user replaceable LED
With light source	Yes

Lifespan

Life time	> 50,000 h
Warranty	5 years

Control gear

Output current	1400 mA
Length	150 mm
Width	45 mm
Height	30 mm

Certificates & Standards

Standards	EMC(CE)	EN IEC 55015:2019+A11:2020 EN IEC 61000-3-2:2019+A1:2021 EN 61000-3-3:2013+A1:2019+A2:2021 EN 61547:2009
	IECEE(CB)	IEC 60598-2-2:2011 IEC 60598-1:2020
Lamp test report	LVD	IEC 60598-1:2020 IEC 60598-2-2:2023 EN 60598-2-2:2012 EN IEC 60598-1:2021+A11:2022
	RoHS	2011/65/EU (EU)2015/863

Additional product data

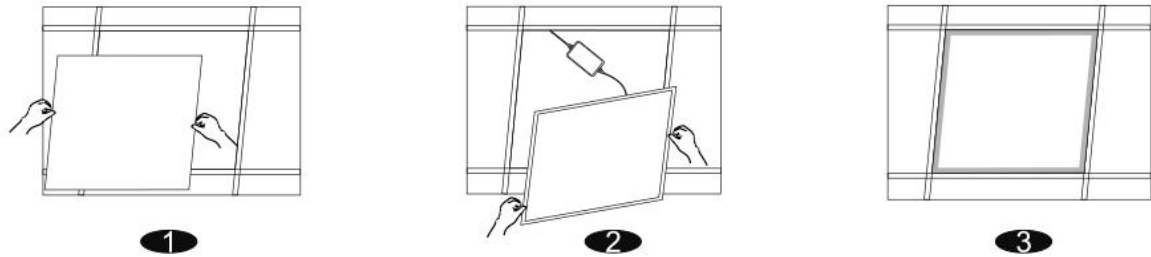
Number of illuminants	Not relevant
-----------------------	--------------

EQUIPMENT / ACCESSORIES

- External control gear included

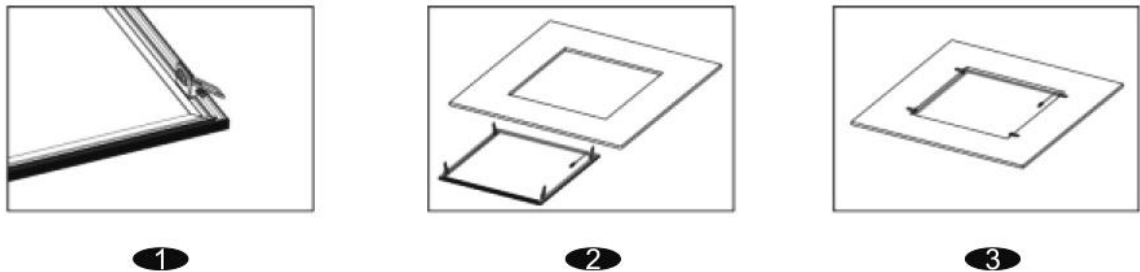
Installation & Method

Schematic diagram for embedded installation



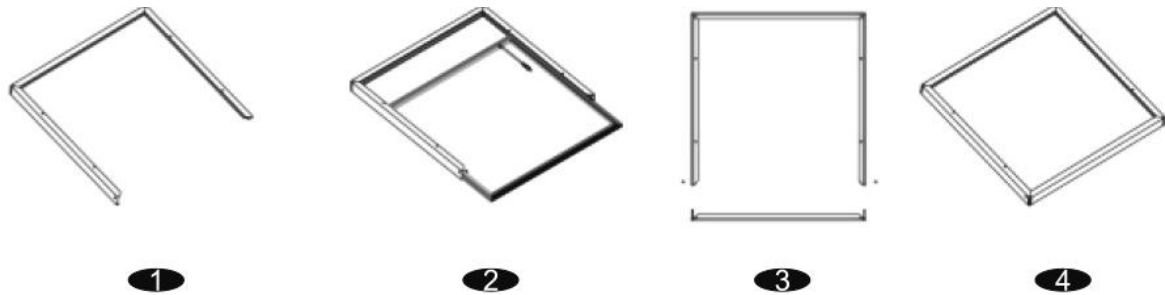
1. Move away ceiling plaster slab, then arrange the wire.
2. Connect the power cord.
3. Fix the panel light to suitable place.

Schematic diagram for clip installation



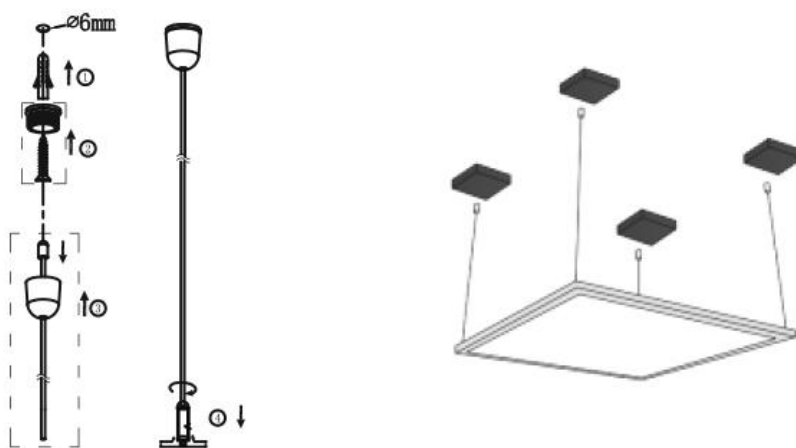
1. Fix 4 spring fasteners by screws to the panel light.
2. Pull up the spring fasteners in vertical, then snap into the cut hole.
3. Complete the installation.

Schematic diagram for ceiling mounting installation



- 1.Connect the 3 frames like a drawer with plastic corner connectors at both ends,then fix onto the roof.
- 2.Slot the panel light into the drawer frames ensuring it sits securely.
- 3.Lock the last frame in place by screw.

Schematic diagram for suspending installation



- 1.Install the plastic expansion screws and self-tapping screws to the desired surface of the roof.
- 2.Screw the hanging device with the steel wires on top of the self-tapping screws.
- 3.Thread the wire through the hooks on the panel light. Adjust the wire to the desired length and lock in with screw nuts.

LOGISTICAL DATA

Product code	Packaging unit(pieces/Unit)	Dimensions (length x width x height)	Gross weight	Volume
HYD-104B -60W	Graphic carton 5	60.5×4×62.5 cm	-	0.01513 m ³
	Master carton 1	64.5×22×63 cm	-	0.08047 m ³

The mentioned product code describes the smallest quantity unit which can be ordered. One shipping unit can contain one or more single products. When placing an order, for the quantity please enter single or multiples of a shipping unit.

DISCLAIMER

Subject to change without notice. Errors and omission excepted. Always make sure to use the most recent release.